

Basin Conditions Update

Water Operations Committee Meeting

Jan. 18, 2023



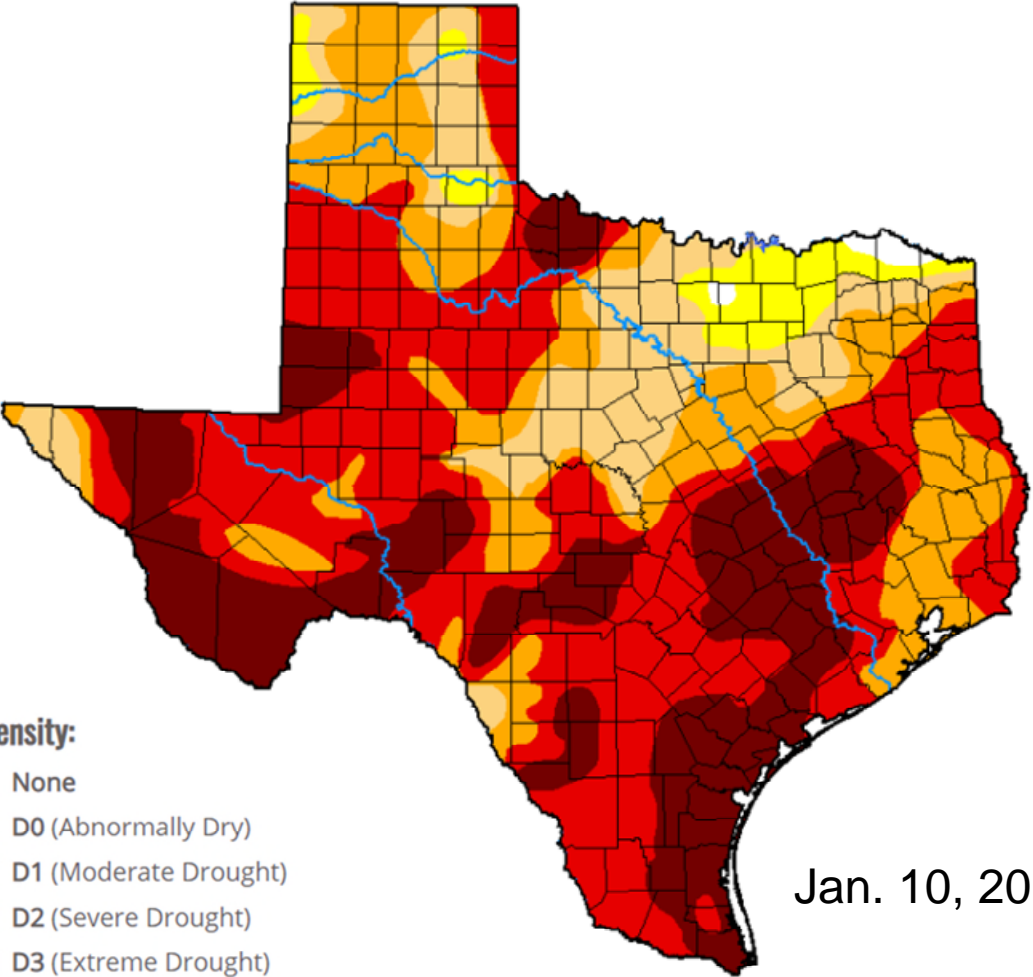
U.S. Drought Monitor Texas

The Drought Monitor focuses on broad-scale conditions. Local conditions may vary. For more information on the Drought Monitor, go to <http://droughtmonitor.unl.edu/About.aspx>

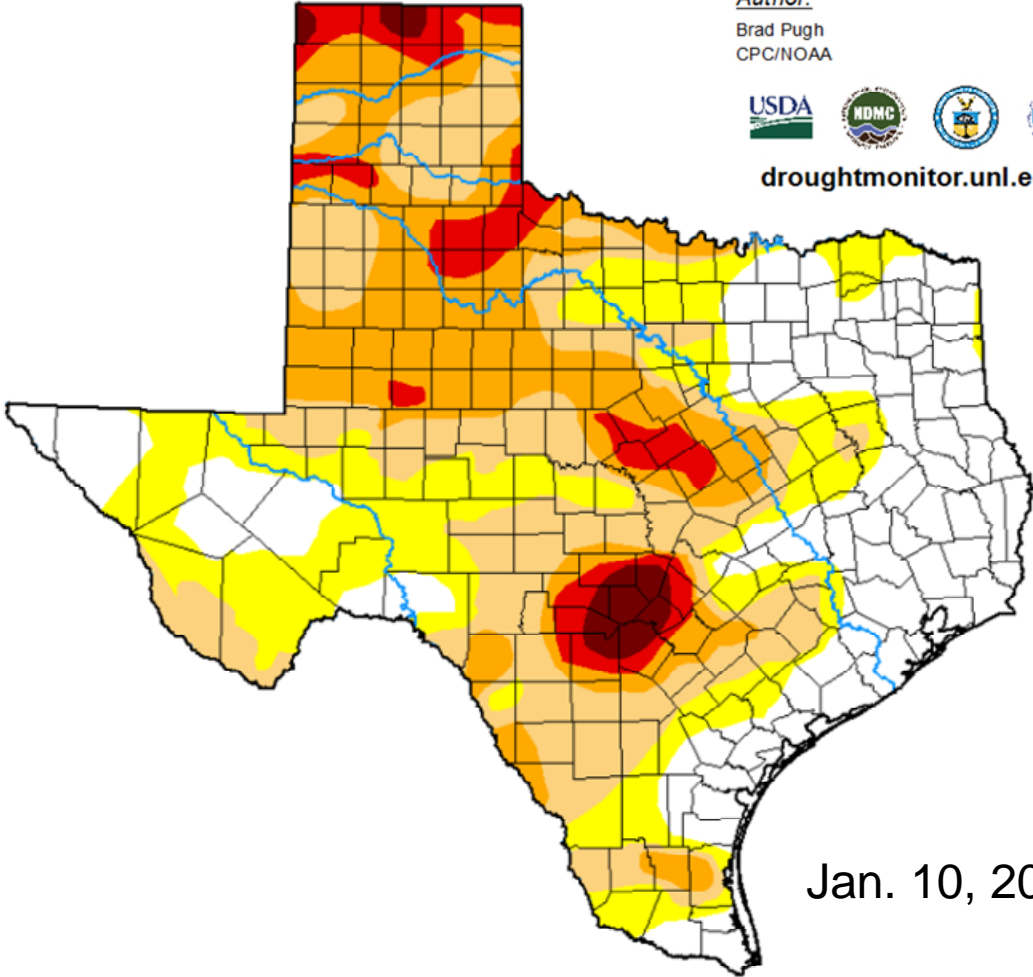
Author:
Brad Pugh
CPC/NOAA



droughtmonitor.unl.edu



Jan. 10, 2012



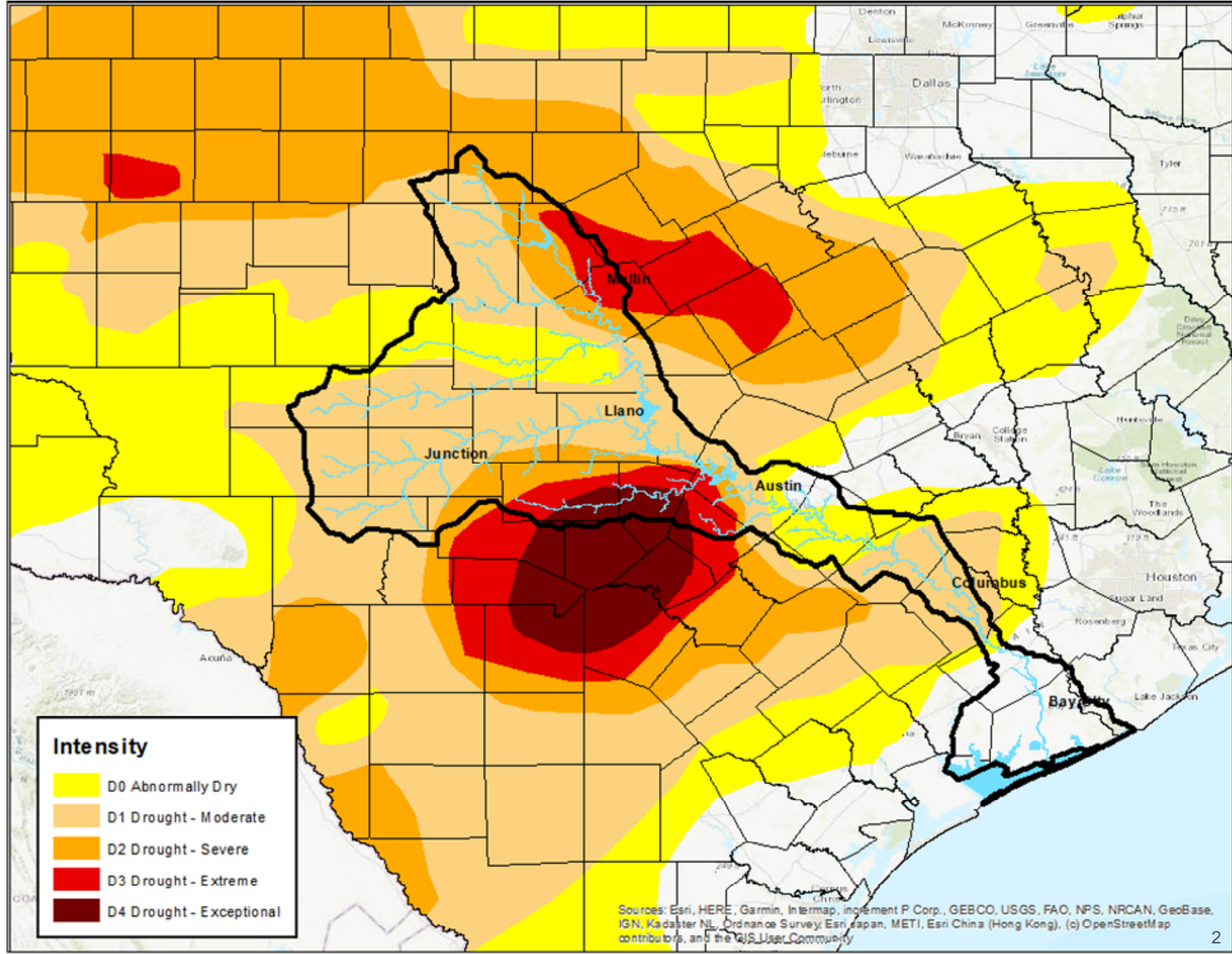
Jan. 10, 2023

- Intensity:**
- None
 - D0 (Abnormally Dry)
 - D1 (Moderate Drought)
 - D2 (Severe Drought)
 - D3 (Extreme Drought)
 - D4 (Exceptional Drought)
 - No Data

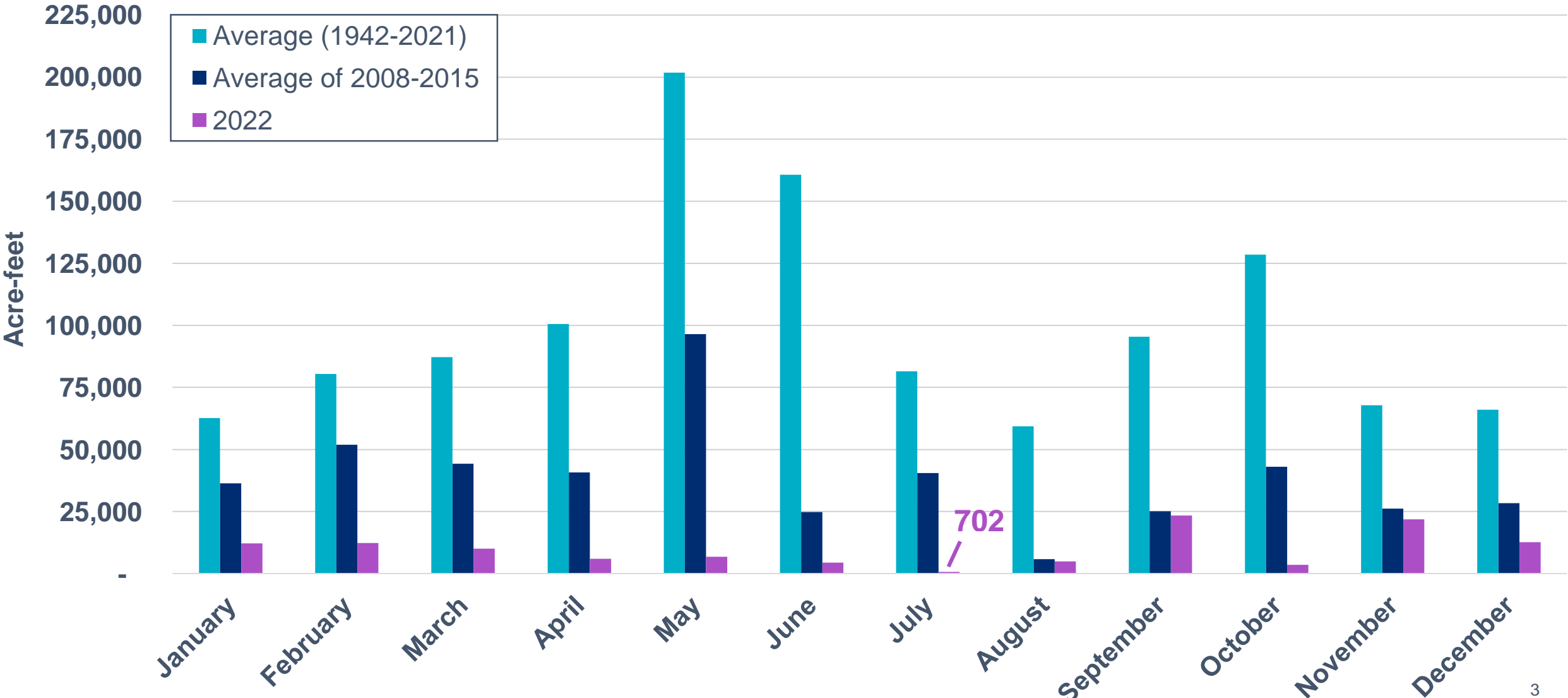
U.S. Drought Monitor

Lower Colorado River Basin

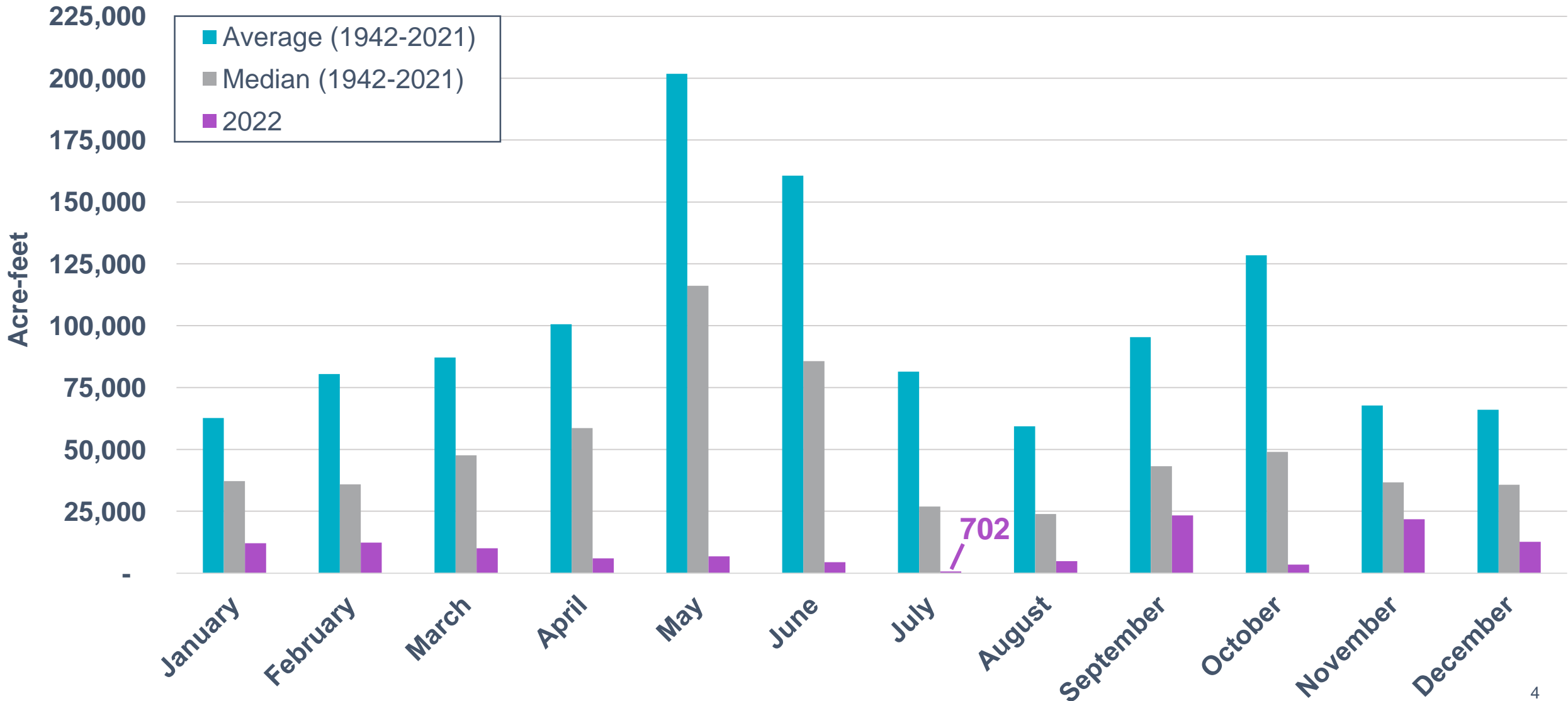
As of Jan. 10, 2023



Water Flowing Into Lakes Buchanan and Travis

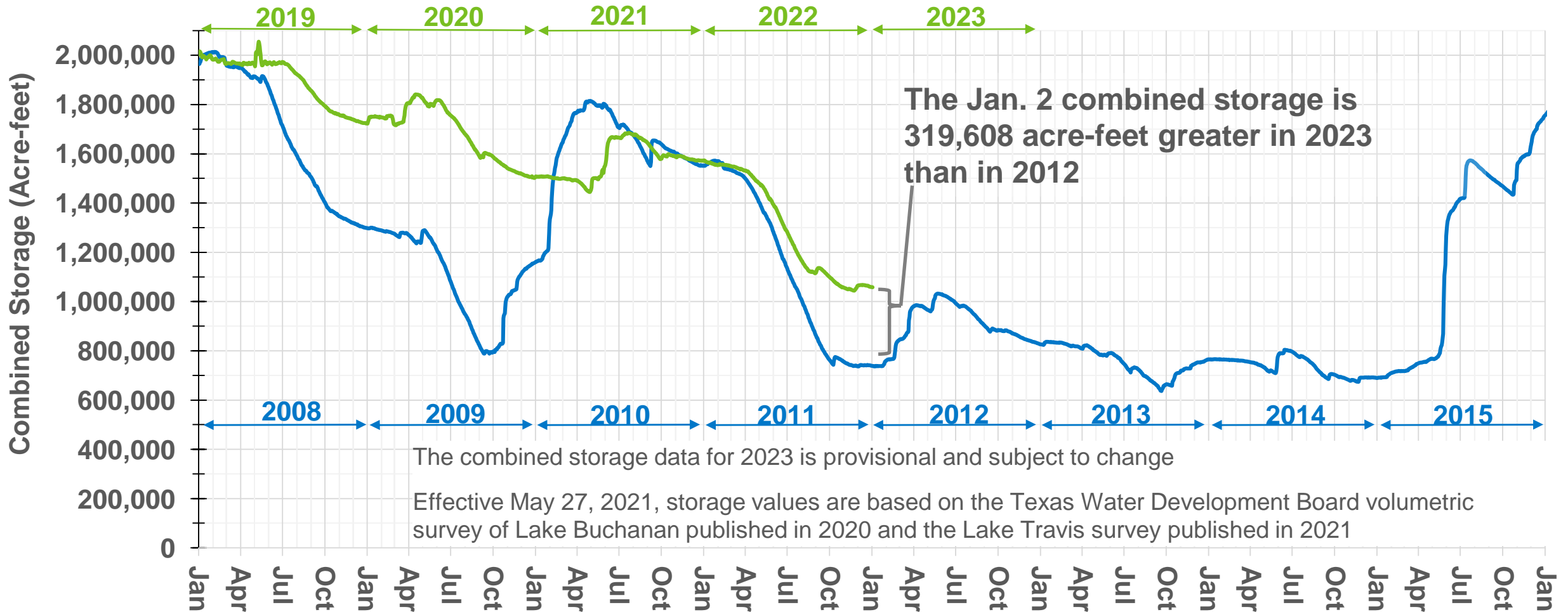


Water Flowing Into Lakes Buchanan and Travis – Median



Combined Storage of Lakes Buchanan and Travis

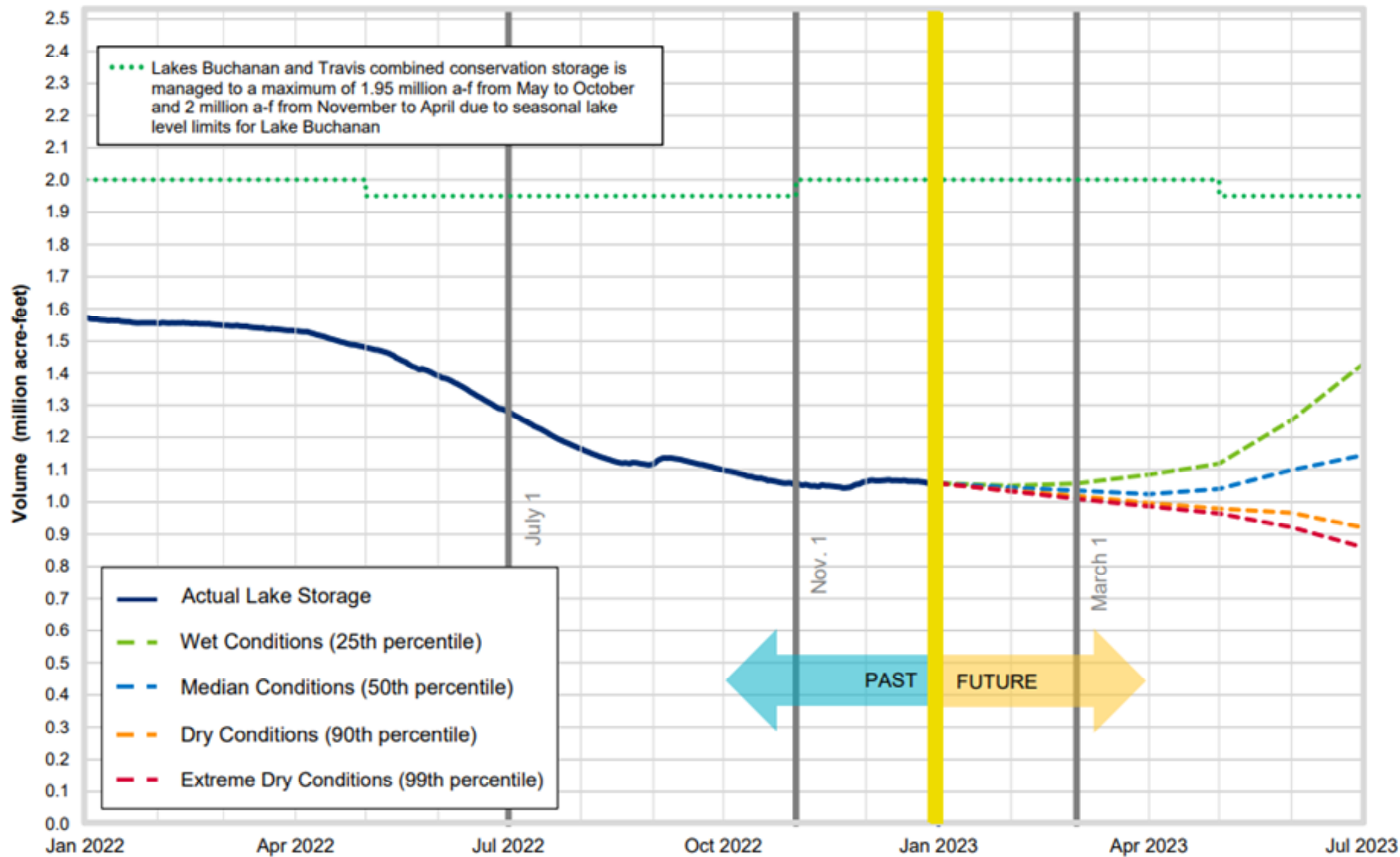
Comparison of 2019-2023 and 2008-2015



The combined storage data for 2023 is provisional and subject to change

Effective May 27, 2021, storage values are based on the Texas Water Development Board volumetric survey of Lake Buchanan published in 2020 and the Lake Travis survey published in 2021

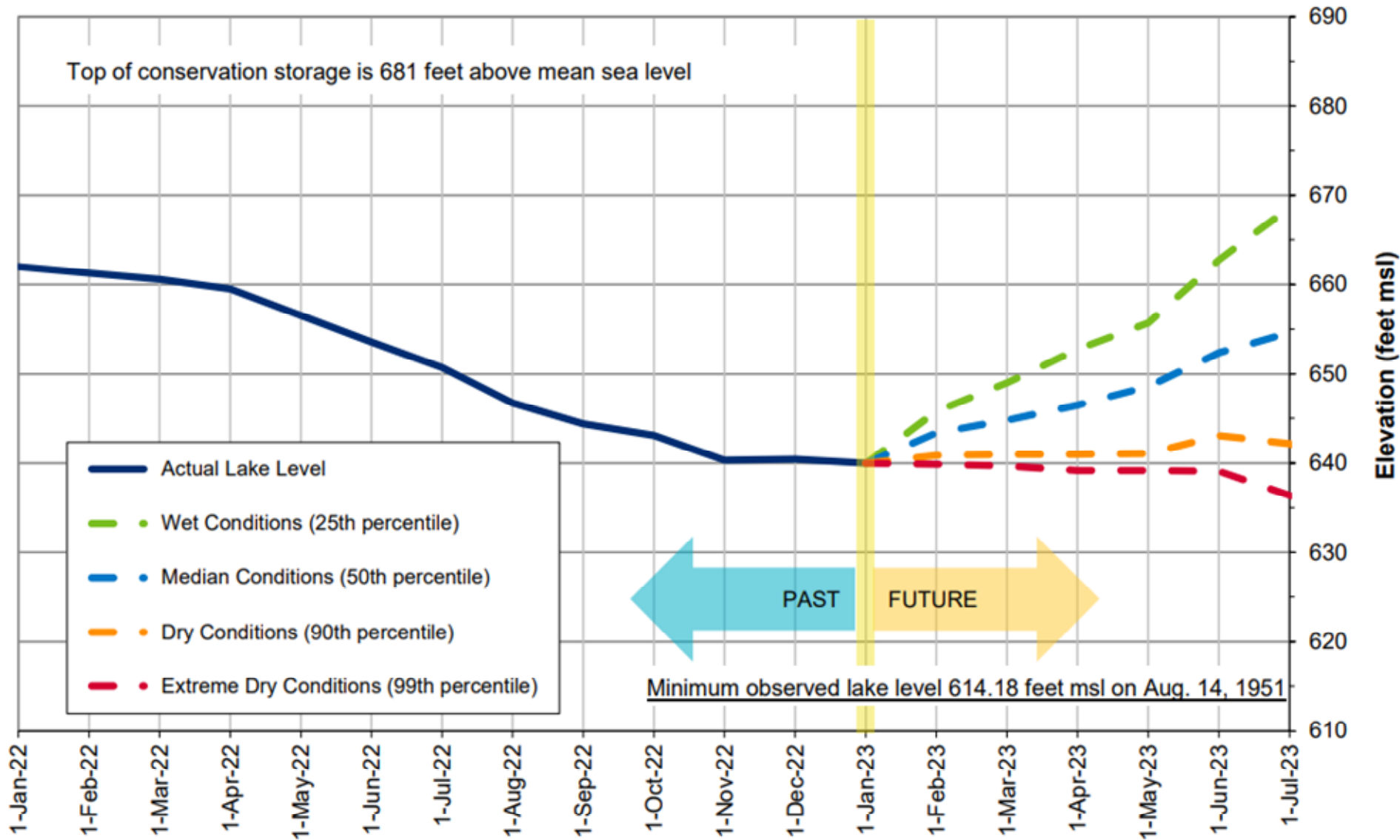
Lakes Buchanan and Travis Total Combined Storage Projections



Date: Jan. 1, 2023

Note: One acre-foot equals 325,851 gallons

Lake Travis Level Projection*

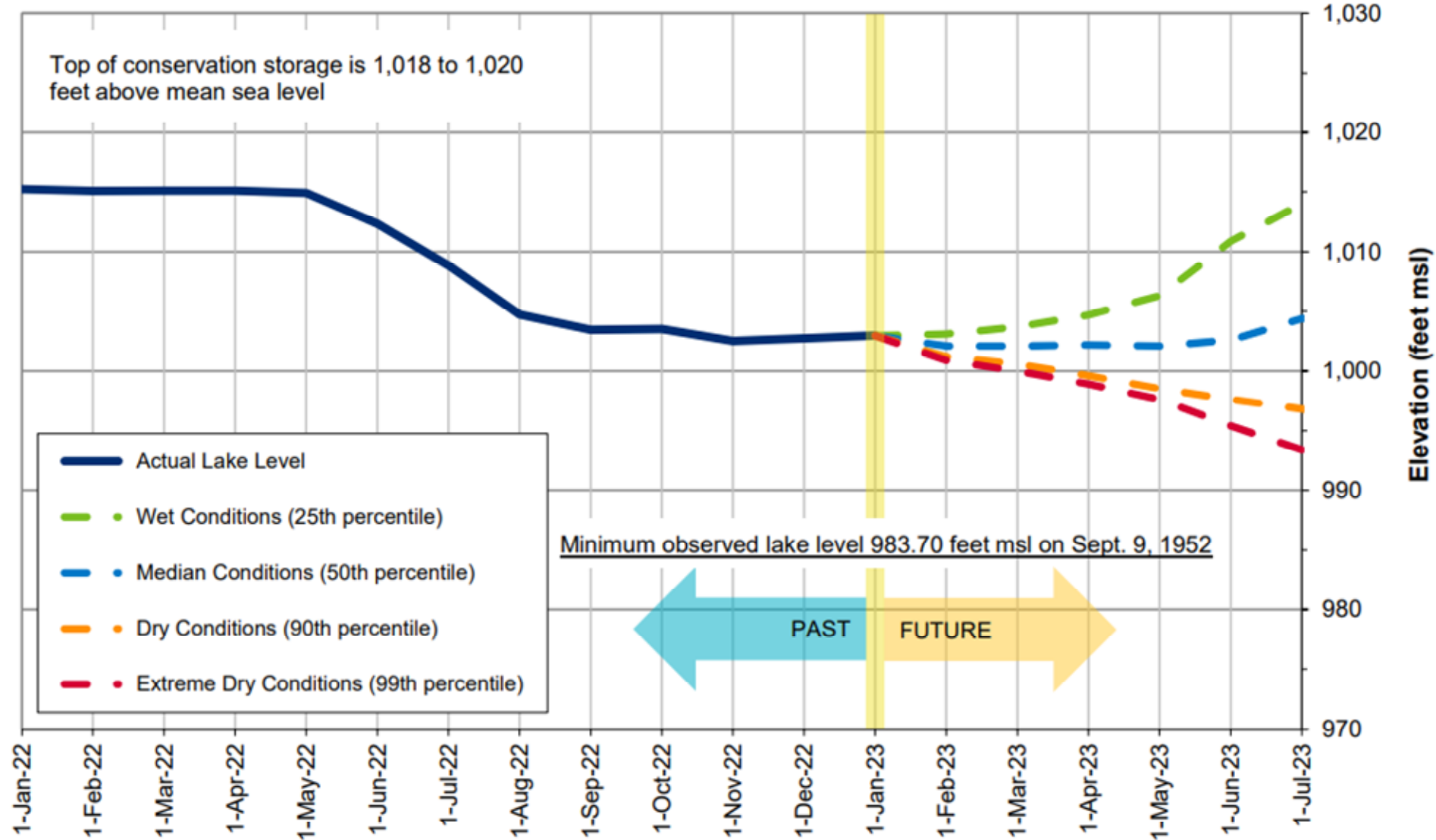


**Average for January:
667.47 feet msl**

**Historic low (1951):
614.18 feet msl**

*Based on results from the draft stochastic model under development to reflect provisions of the 2020 Water Management Plan

Lake Buchanan Level Projection*



**Average for January:
1,010.88 feet msl**

**Historic low (1952):
983.70 feet msl**

*Based on results from the draft stochastic model under development to reflect provisions of the 2020 Water Management Plan

Lake Level Comparisons

	Jan. 1, 2022	Jan. 1, 2023
Lake Travis (feet msl)	661.98	639.93
Lake Buchanan (feet msl)	1,015.25	1,002.97
Combined storage* (a-f)	1,571,913	1,058,010

*For purposes of the 2020 Water Management Plan, the combined storage is defined as the total of the daily average volume of water in lakes Buchanan and Travis. This determination excludes any water in Lake Buchanan above elevation 1,018 feet msl in the months of May through October or above 1,020 feet msl in the months of November through April and any water in Lake Travis above elevation 681 feet msl.



LCRA

ENERGY • WATER • COMMUNITY SERVICES