

- Project Endpoint
- Alternative Transmission Line Route
- A1 Segment Label
- Segment Endpoint
- Matchline
- County Boundary
- Pipeline 8" diameter or greater
- Major Stream
- Existing Transmission Line
- Railroad
- Road
- Study Area

*Pipeline Commodity Key:*  
 CO2 - Carbon Dioxide Transmission  
 CRL - Crude Oil Gathering  
 CRO - Crude Oil Transmission  
 HVL - Highly Volatile Liquid Transmission  
 NGG - Natural Gas Gathering  
 NGT - Natural Gas Transmission  
 PRD - Refined Liquid Product Transmission

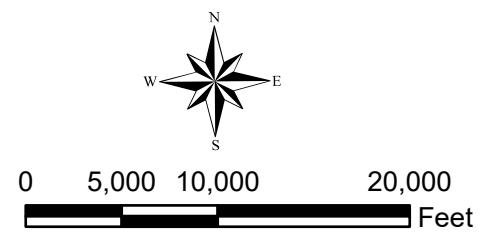
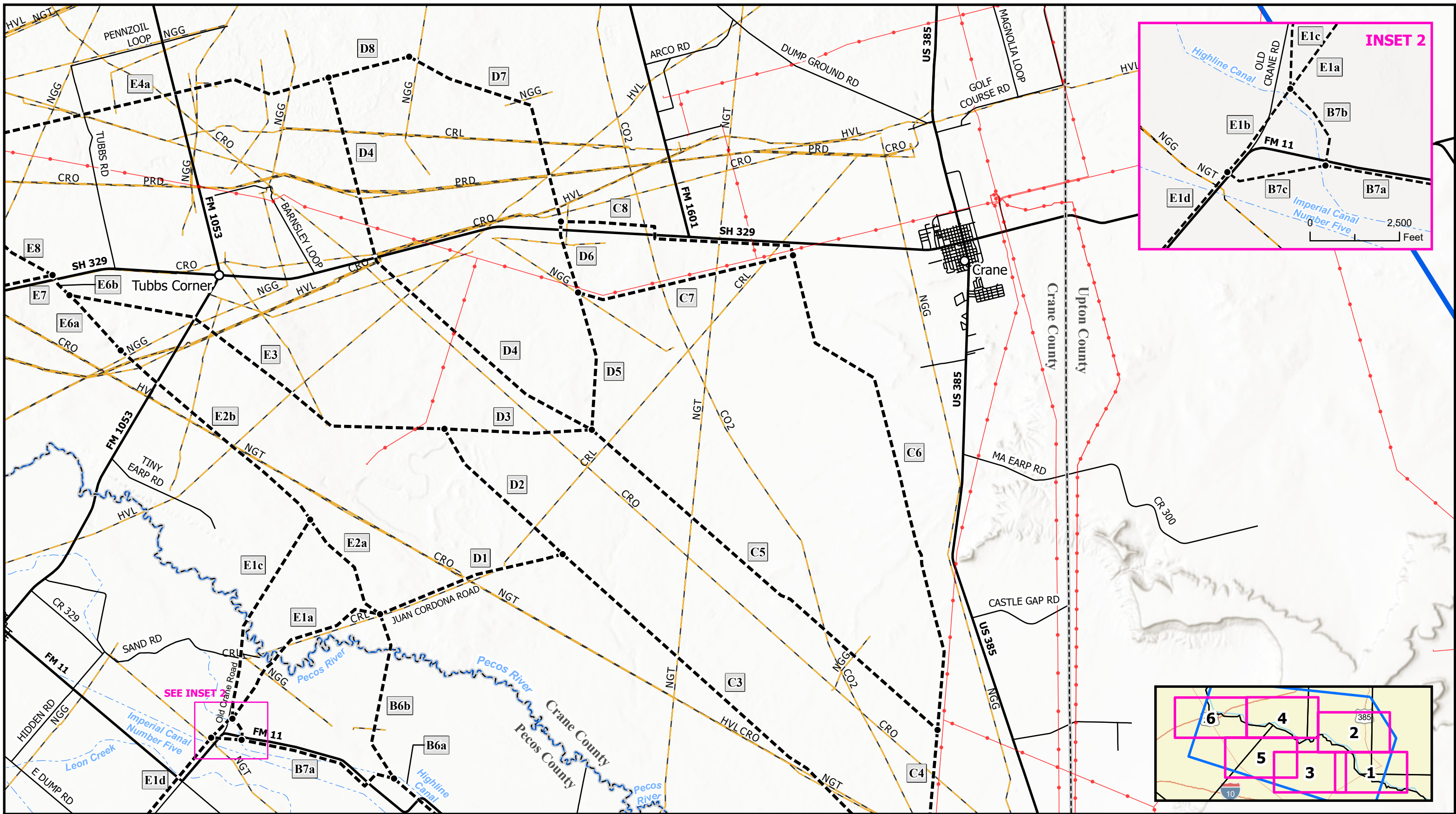


Figure 1  
 Detailed Route Description Map  
 North McCamey to Sand Lake  
 345-kV Transmission Line Project



- Project Endpoint
- Alternative Transmission Line Route
- Ⓐ Segment Label
- Segment Endpoint
- Matchline
- County Boundary
- Pipeline 8" diameter or greater
- Major Stream
- Existing Transmission Line
- Railroad
- Road
- Study Area

*Pipeline Commodity Key:*  
 CO2 - Carbon Dioxide Transmission  
 CRL - Crude Oil Gathering  
 CRO - Crude Oil Transmission  
 HVL - Highly Volatile Liquid Transmission  
 NGG - Natural Gas Gathering  
 NGT - Natural Gas Transmission  
 PRD - Refined Liquid Product Transmission

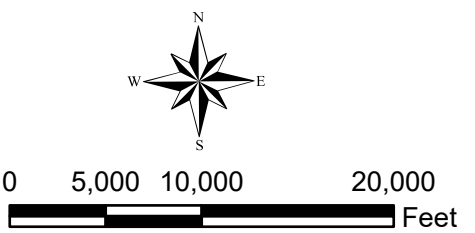
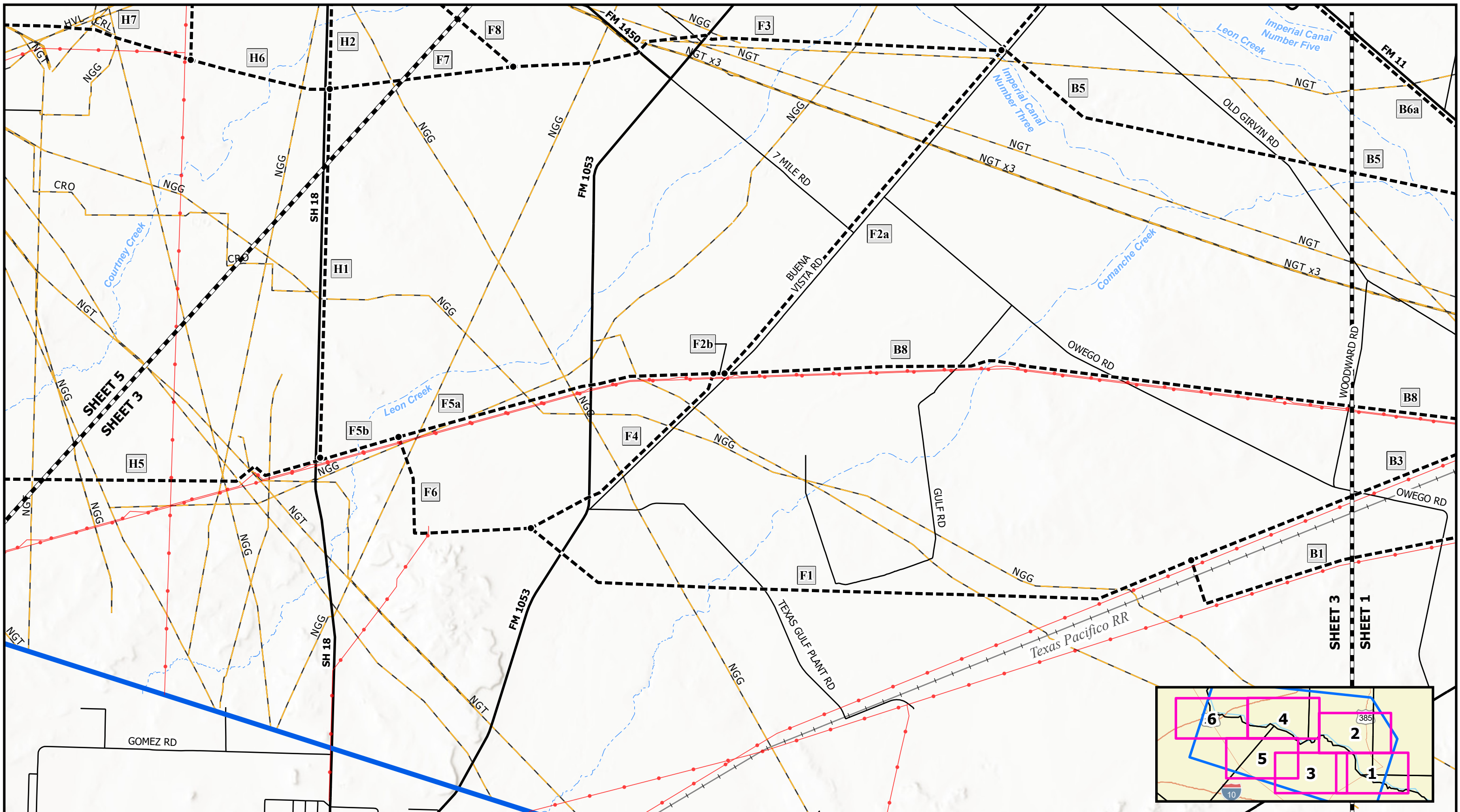


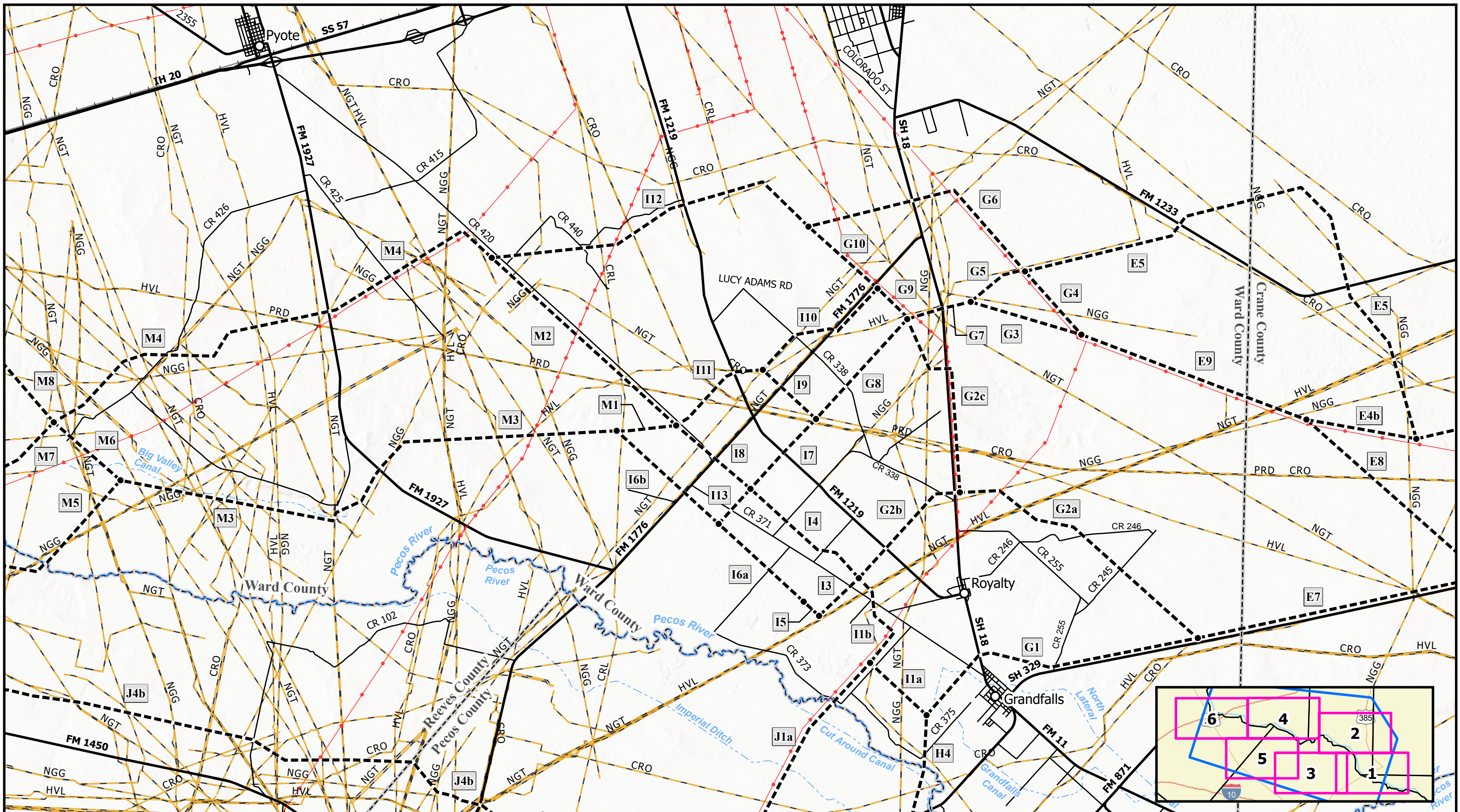
Figure 2  
 Detailed Route Description Map  
 North McCamey to Sand Lake  
 345-kV Transmission Line Project



- Project Endpoint
- Alternative Transmission Line Route
- Ⓐ Segment Label
- Segment Endpoint
- Matchline
- County Boundary
- Pipeline 8" diameter or greater
- Major Stream
- Existing Transmission Line
- Railroad
- Road
- Study Area

**Pipeline Commodity Key:**  
 CO2 - Carbon Dioxide Transmission  
 CRL - Crude Oil Gathering  
 CRO - Crude Oil Transmission  
 HVL - Highly Volatile Liquid Transmission  
 NGG - Natural Gas Gathering  
 NGT - Natural Gas Transmission  
 PRD - Refined Liquid Product Transmission

**Figure 3**  
 Detailed Route Description Map  
 North McCamey to Sand Lake  
 345-kV Transmission Line Project



- Project Endpoint
- Alternative Transmission Line Route
- AI Segment Label
- Segment Endpoint
- ▬ Matchline
- - - County Boundary
- Pipeline 8" diameter or greater
- Major Stream
- Existing Transmission Line
- Railroad
- Road
- Study Area

*Pipeline Commodity Key:*  
 CO2 - Carbon Dioxide Transmission  
 CRL - Crude Oil Gathering  
 CRO - Crude Oil Transmission  
 HVL - Highly Volatile Liquid Transmission  
 NGG - Natural Gas Gathering  
 NGT - Natural Gas Transmission  
 PRD - Refined Liquid Product Transmission

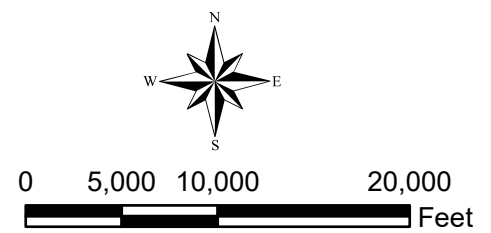
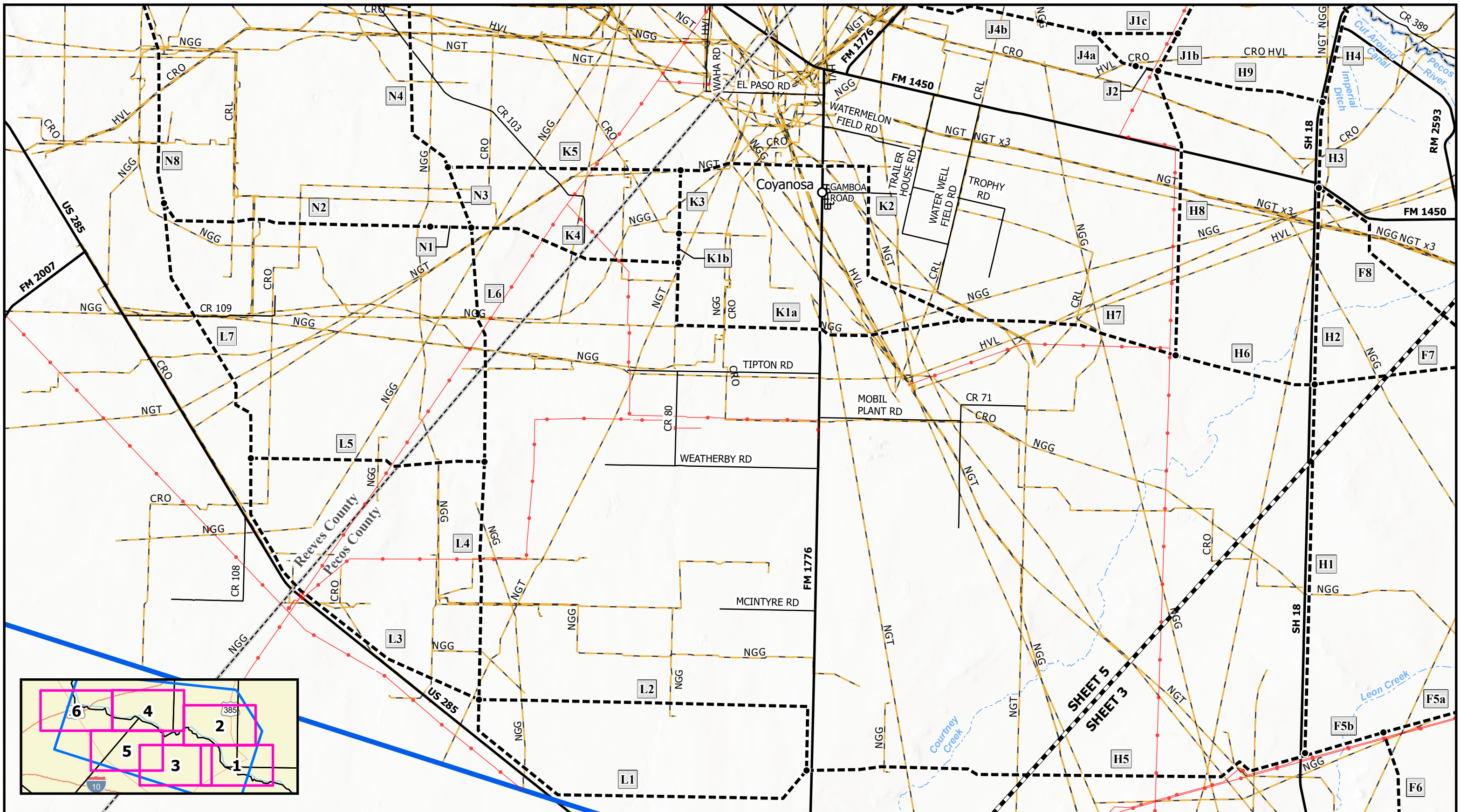


Figure 4  
 Detailed Route Description Map  
 North McCamey to Sand Lake  
 345-kV Transmission Line Project



- Project Endpoint
- Alternative Transmission Line Route
- Ⓐ Segment Label
- Segment Endpoint
- Matchline
- County Boundary
- Pipeline 8" diameter or greater
- Major Stream
- Existing Transmission Line
- Railroad
- Road
- Study Area

*Pipeline Commodity Key:*  
 CO2 - Carbon Dioxide Transmission  
 CRL - Crude Oil Gathering  
 CRO - Crude Oil Transmission  
 HVL - Highly Volatile Liquid Transmission  
 NGG - Natural Gas Gathering  
 NGT - Natural Gas Transmission  
 PRD - Refined Liquid Product Transmission

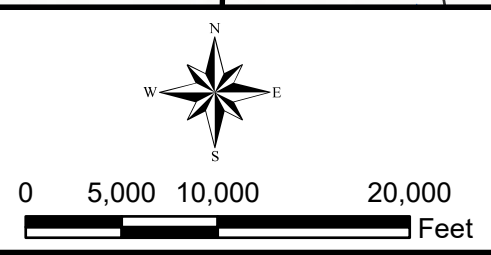
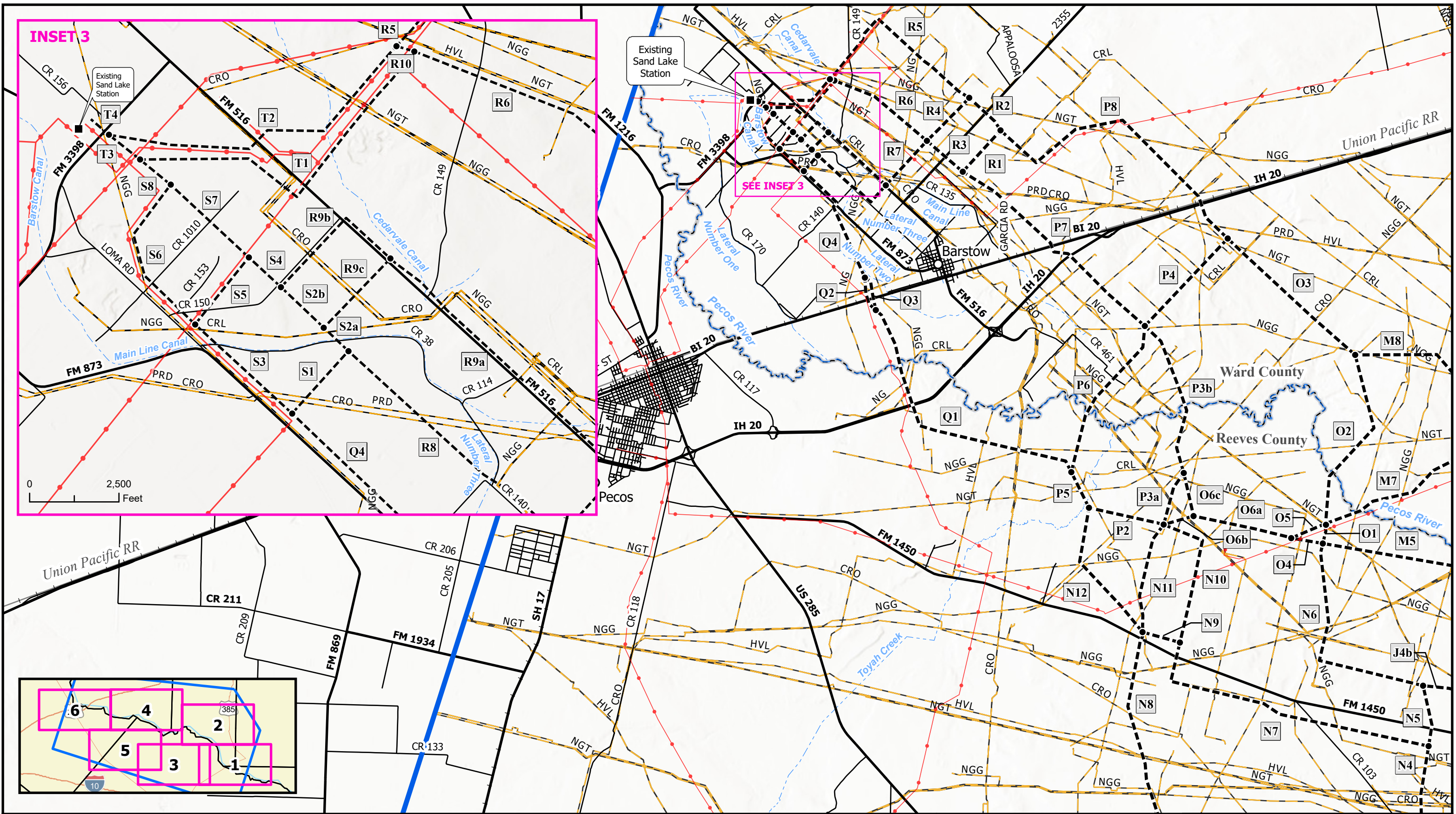


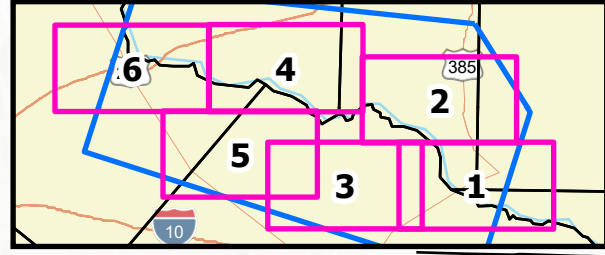
Figure 5  
 Detailed Route Description Map  
 North McCamey to Sand Lake  
 345-kV Transmission Line Project



**INSET 3**

SEE INSET 3

0 2,500 Feet



- Project Endpoint
- Alternative Transmission Line Route
- AI Segment Label
- Segment Endpoint
- Matchline
- County Boundary
- Pipeline 8" diameter or greater
- Major Stream
- Existing Transmission Line
- Railroad
- Road
- Study Area

*Pipeline Commodity Key:*  
 CO2 - Carbon Dioxide Transmission  
 CRL - Crude Oil Gathering  
 CRO - Crude Oil Transmission  
 HVL - Highly Volatile Liquid Transmission  
 NGG - Natural Gas Gathering  
 NGT - Natural Gas Transmission  
 PRD - Refined Liquid Product Transmission



0 5,000 10,000 20,000 Feet



**Figure 6**  
 Detailed Route Description Map  
 North McCamey to Sand Lake  
 345-kV Transmission Line Project