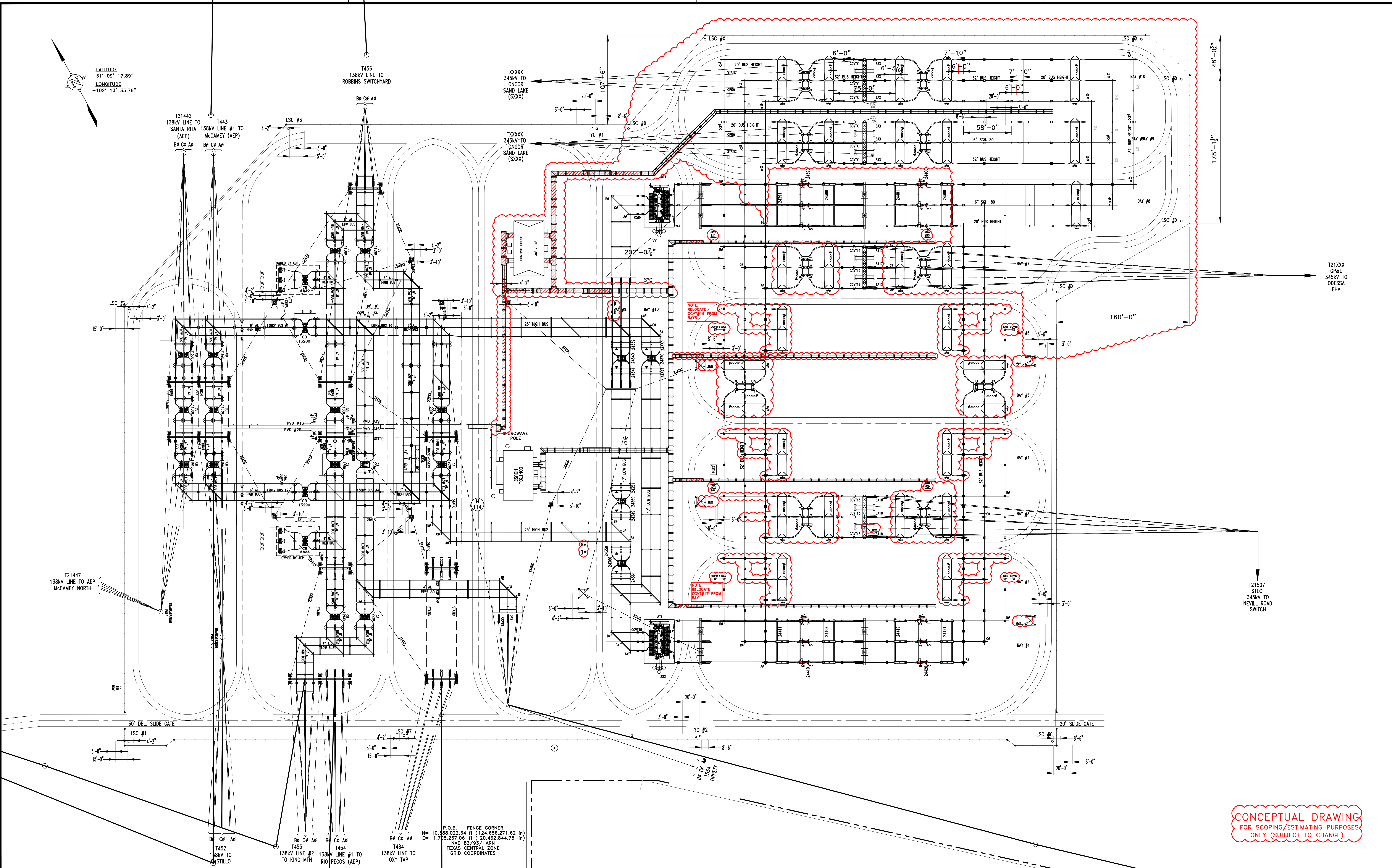


LATITUDE  
31° 09' 17.89"  
LONGITUDE  
-102° 13' 35.76"



CONCEPTUAL DRAWING  
FOR SCOPING/ESTIMATING PURPOSES  
ONLY (SUBJECT TO CHANGE)

B				E			
A				D			
-				C			
Ltr.	Date	Revision	By	Ltr.	Date	Revision	By
REV DWN BY:				REV CHKD BY:			
				REV APPRVD BY:			

DWN. BY:  
CHKD BY:  
APPRVD BY:

RELEASED FOR INFORMATION ONLY BY  
LCRA TSC SUBSTATION ENGINEERING  
ON  
01/12/2023  
AND SHALL NOT BE USED FOR  
PERMIT, PROCUREMENT OR  
CONSTRUCTION PURPOSES



LCRA TRANSMISSION SERVICES CORPORATION  
AUSTIN, TEXAS  
LOCATION  
LCRA-NORTH McCAMEY

INITIAL LAYOUT  
FOR PLC SCOPE 2054.2

DATE  
1-2023  
SCALE  
1"=50'-0"  
DWG. NO.  
S476-E-3-1

XXXX-XX