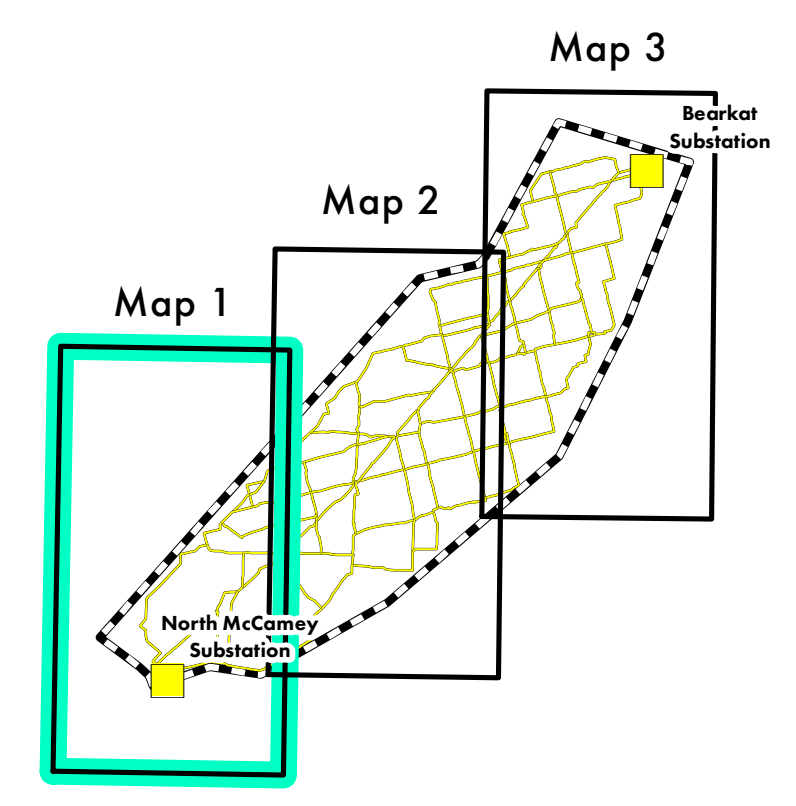
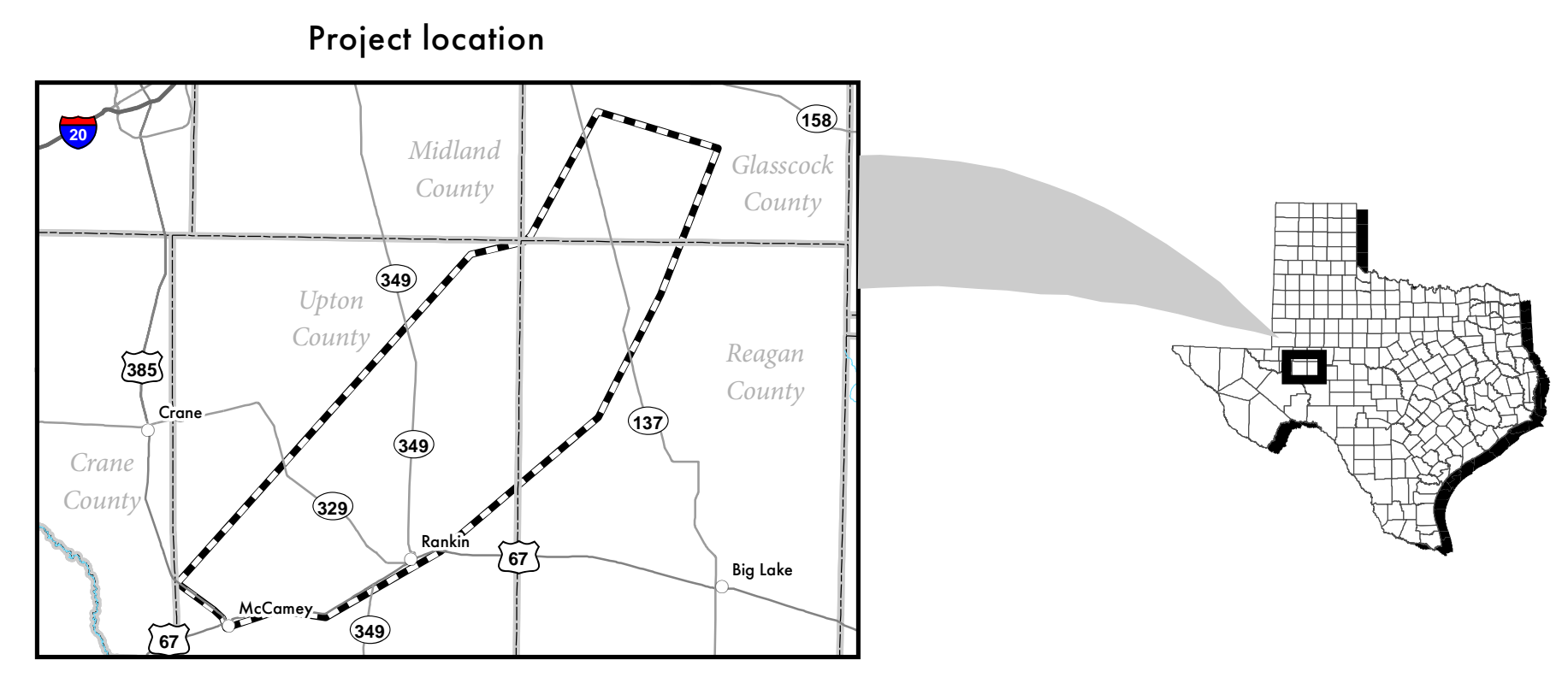
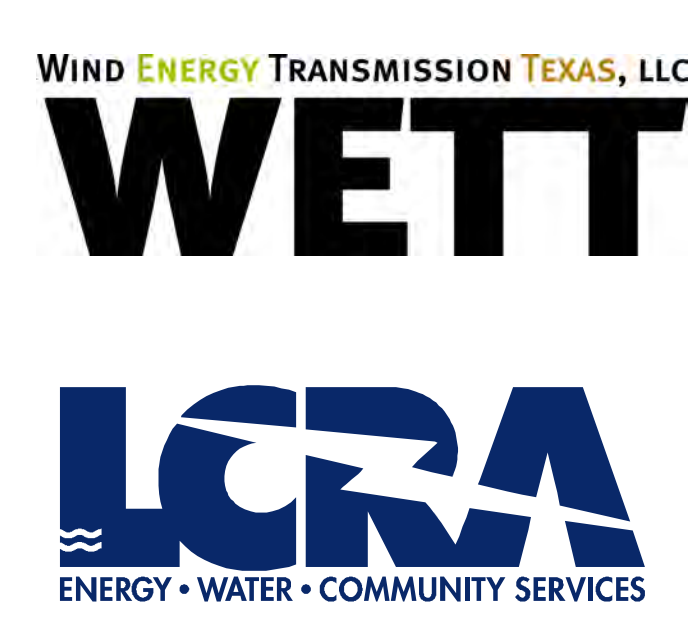


The Lower Colorado River Authority and its employees are committed to enhancing the lives of Texans through water stewardship, energy and community services. L CRA was created by the Texas Legislature in 1934. The organization neither lends loans nor receives tax money. This map has been produced by the Lower Colorado River Authority for its own use. Accordingly, certain information, features or details may have been emphasized, deem others or may have been left out. L CRA does not warrant the accuracy of this map, either as to scale, accuracy or completeness.

Aerial Imagery: September 2022  
 Parcel Data: November 2022



- Preliminary Route Segment
- Project Substations
- Noticed Parcel
- Project Study Area

**North McCamey to Bearkat  
 345-kV Transmission Line Project  
 Open House Notification Map**

Map 1 of 3

