

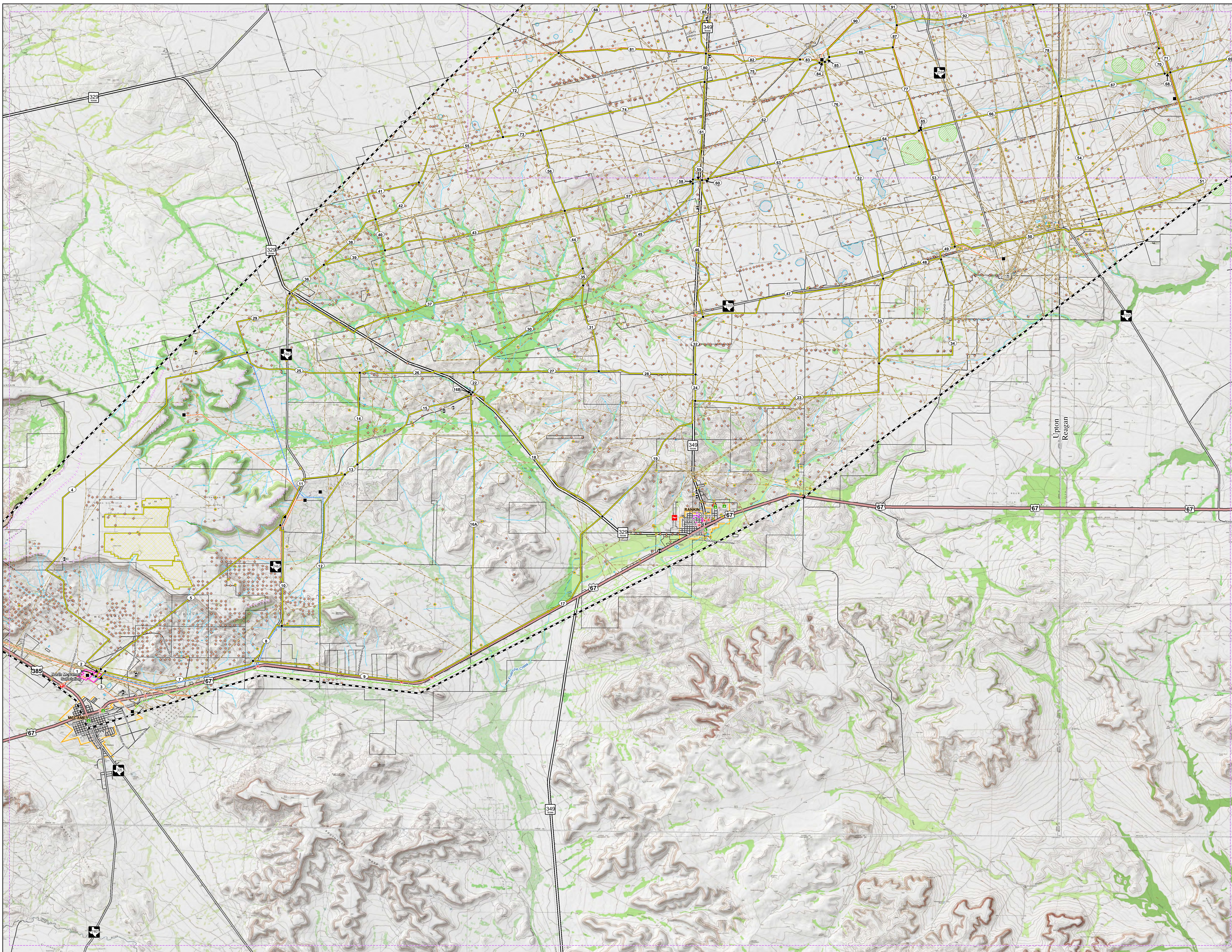
## **Appendix D**

### **Figure 4-16a and b**

*This page left blank intentionally.*

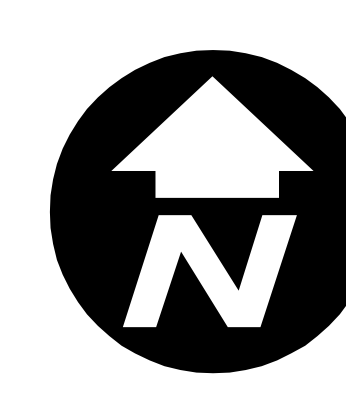
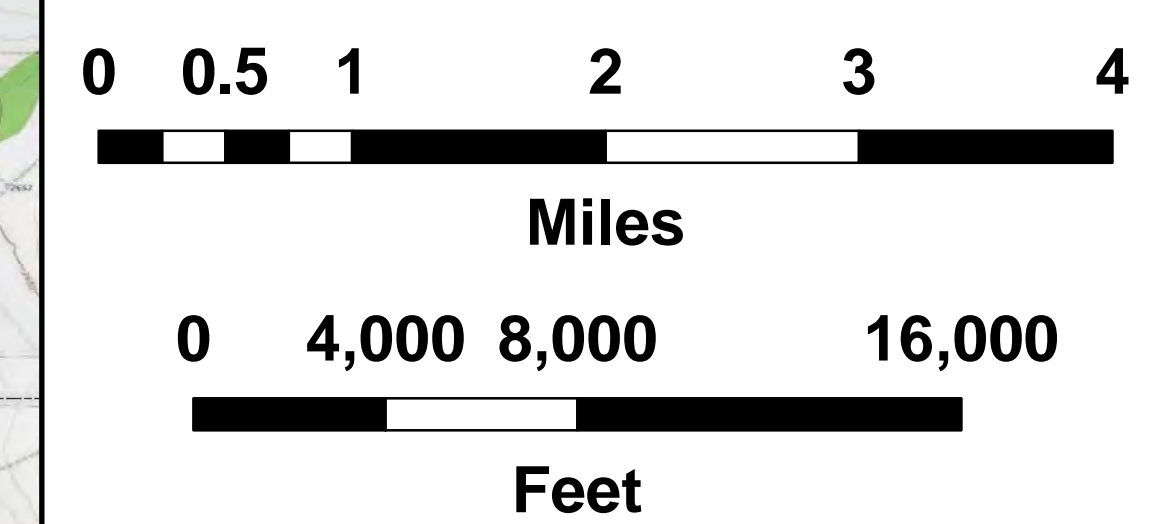
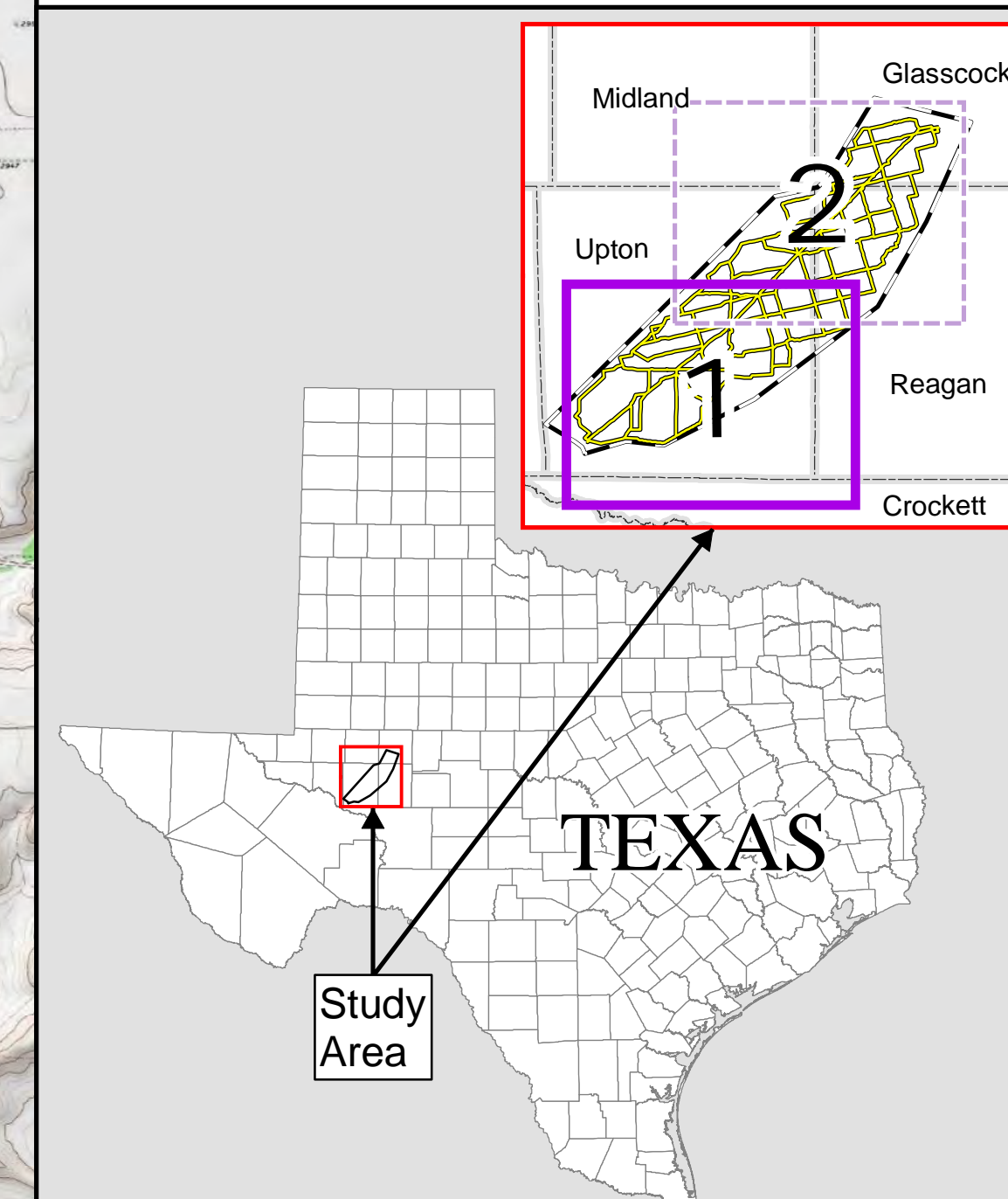


North McCamey to Bearkat  
345-kV Transmission Line Project  
FIGURE 4-16a  
PRIMARY  
ALTERNATIVE ROUTES  
WITH ENVIRONMENTAL AND  
LAND USE CONSTRAINTS



- Legend**
- Project Components**
- Study Area
  - Primary Alternative Segment, Label, and Node
  - Substation Boundary
  - Sheet Match Line
- Existing Utilities**
- Existing Substation
  - 345-kV Transmission Line
  - 138-kV Transmission Line
  - 69-kV Transmission Line
  - Oil / Gas Pipeline (greater than or equal to 6 inch diameter)
- Landuse Features**
- Cemetery
  - Church
  - FM, Microwave or Other Communication Tower
  - Historical Marker
  - School
  - Park
  - Water Well
  - Wind Turbine
  - Oil / Gas Well
  - Pivot Irrigation
  - Orchard
  - Solar Farm
- Transportation Features**
- Public Airport
  - Private Airport
  - Helipoint
  - US Highway
  - State Highway
  - Farm to Market Road
  - Local Road
  - Railroad
- Hydrologic Features**
- Stream or River
  - Water Body
  - NWI Wetland
- Administrative Features**
- Parcel Boundary
  - City Boundary
  - County Boundary

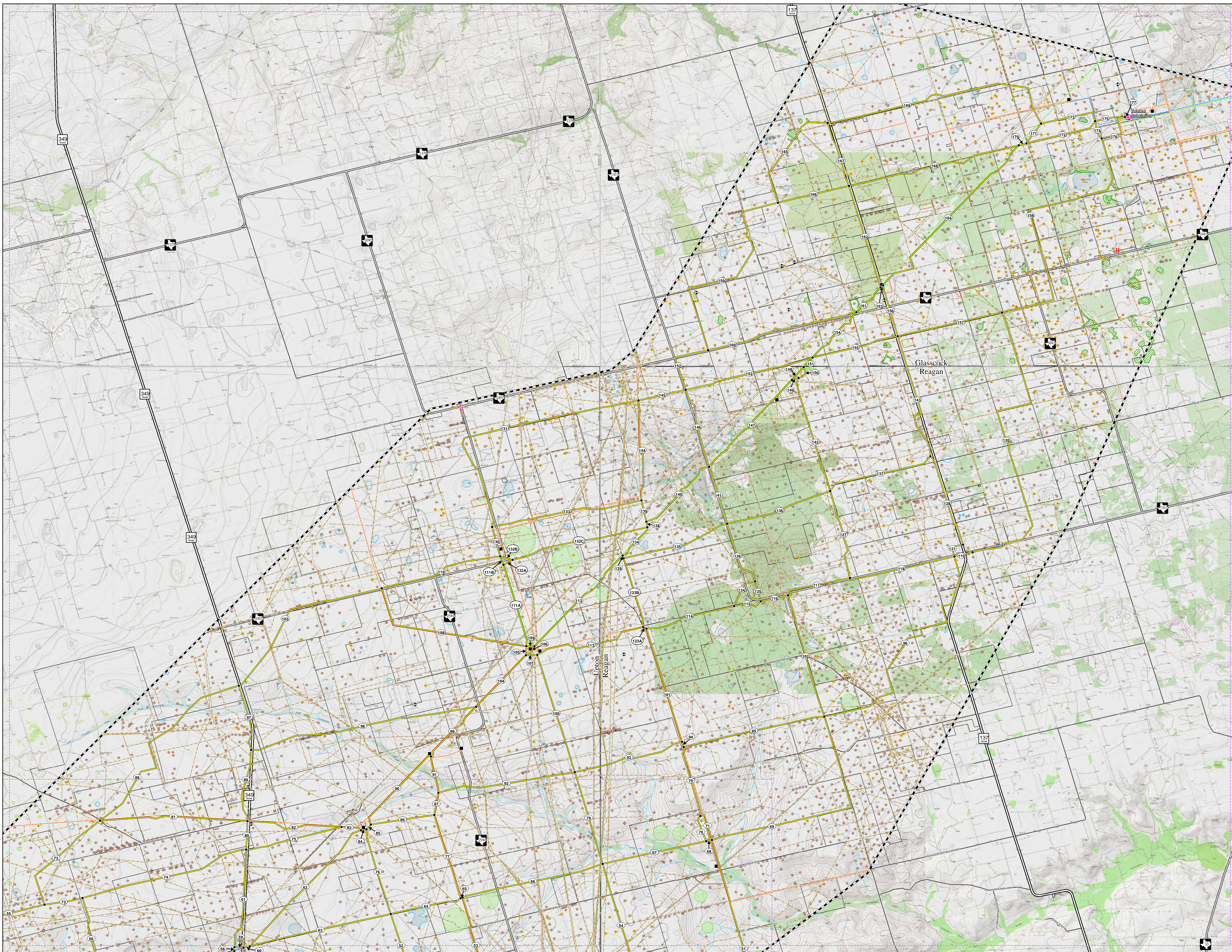
Note:  
Cultural resource data are not shown on this map as these data are not to be reproduced, distributed, or  
released to the public.  
Some data from existing property boundaries, pipelines, wetlands, and other well established boundaries  
cannot be located in every segment. These data have not been corrected and should be used for general  
display of initial preliminary transmission line segments was performed based on aerial interpretation of these  
data.  
Some legend symbols are enlarged for easier identification.  
Once an alternative route is selected and approved by the Commission, the represented cartographic is subject to  
modification after access has been granted and on the ground surveys have been completed to identify unknown  
obstacles or the extent of these constraints.  
Base Map: USA Topographic Maps Date: 4/28/2023



Sheet 1 of 2



North McCamey to Bearkat  
345-kV Transmission Line Project  
FIGURE 4-16b  
PRIMARY  
ALTERNATIVE ROUTES  
WITH ENVIRONMENTAL AND  
LAND USE CONSTRAINTS



- Legend**
- Project Components**
- Study Area
  - Primary Alternative Segment, Label, and Node
  - Substation Boundary
  - Sheet Match Line
- Existing Utilities**
- Existing Substation
  - 345-kV Transmission Line
  - 138-kV Transmission Line
  - 69-kV Transmission Line
  - Oil / Gas Pipeline (greater than or equal to 6 inch diameter)
- Landuse Features**
- Cemetery
  - Church
  - FM, Microwave or Other Communication Tower
  - Historical Marker
  - School
  - Park
  - Water Well
  - Wind Turbine
  - Oil / Gas Well
  - Pivot Irrigation
  - Orchard
  - Solar Farm
- Transportation Features**
- Public Airport
  - Private Airport
  - Heliport
  - US Highway
  - State Highway
  - Farm to Market Road
  - Local Road
  - Railroad
- Hydrologic Features**
- Stream or River
  - Water Body
  - NWI Wetland
- Administrative Features**
- Parcel Boundary
  - City Boundary
  - County Boundary

Note:  
Where cultural resource data are not shown on the map, these data are not to be reproduced, distributed, or  
accessed to the public.  
Some data from existing property boundaries, pipelines, wetlands, and other well established boundaries  
cannot be located in every segment. These data have not been corrected and should be used for general  
reference only.  
Duplication of individual preliminary transmission line segments was performed based on aerial interpretation of these  
aerials.  
Some legend symbols are intended for easier identification.  
Once an alternative route is selected and approved by the Commission, the represented cartilage is subject to  
modification after access has been granted and on the ground surveys have been completed to identify unknown  
obstacles or the extent of these constraints.  
Base Map: USA Topographic Maps Date: 4/28/2023

