

Basin Conditions Update

LCRA Board of Directors Meeting
June 18, 2024



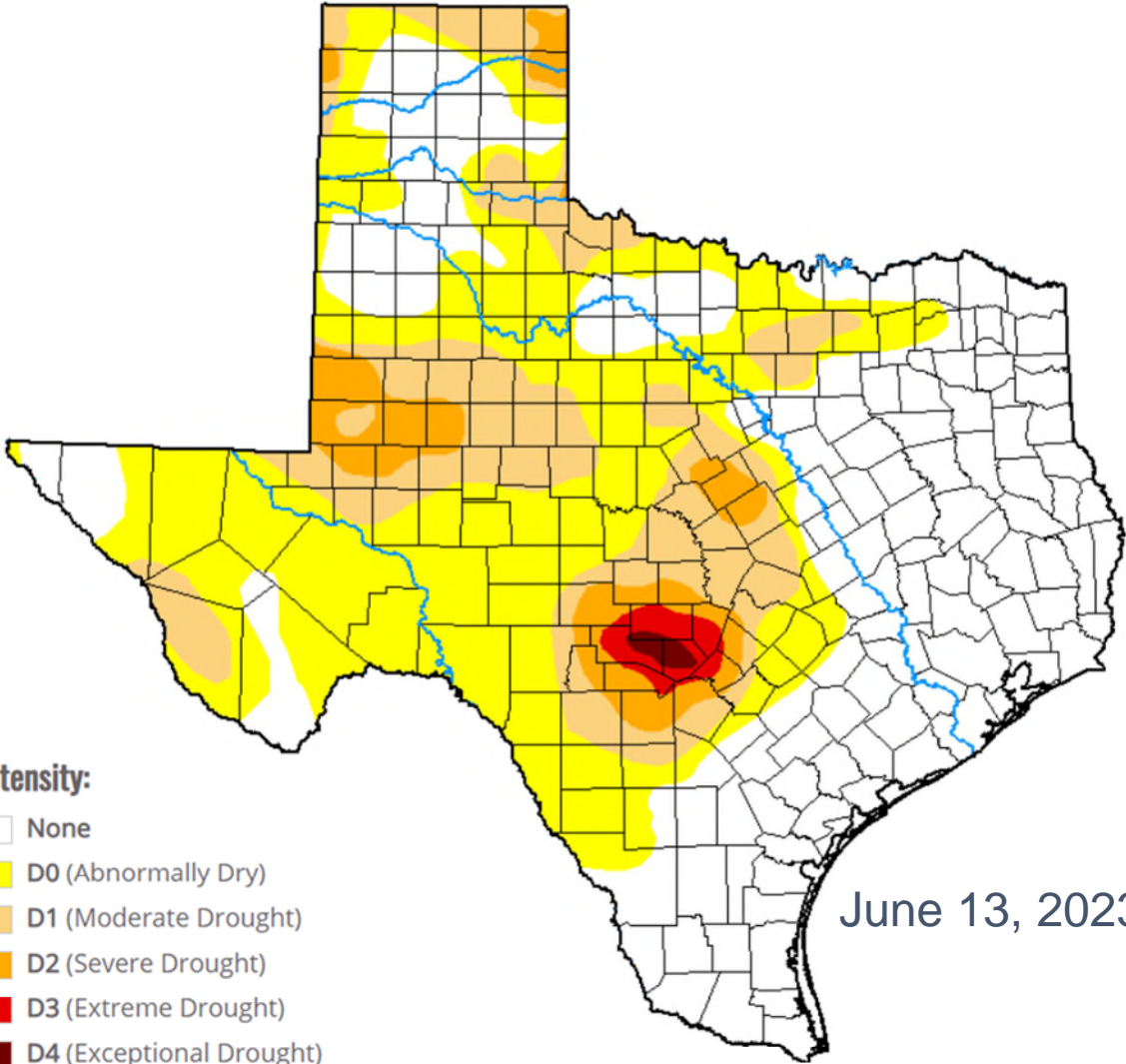
U.S. Drought Monitor Texas

The Drought Monitor focuses on broad-scale conditions. Local conditions may vary. For more information on the Drought Monitor, go to <https://droughtmonitor.unl.edu/About.aspx>

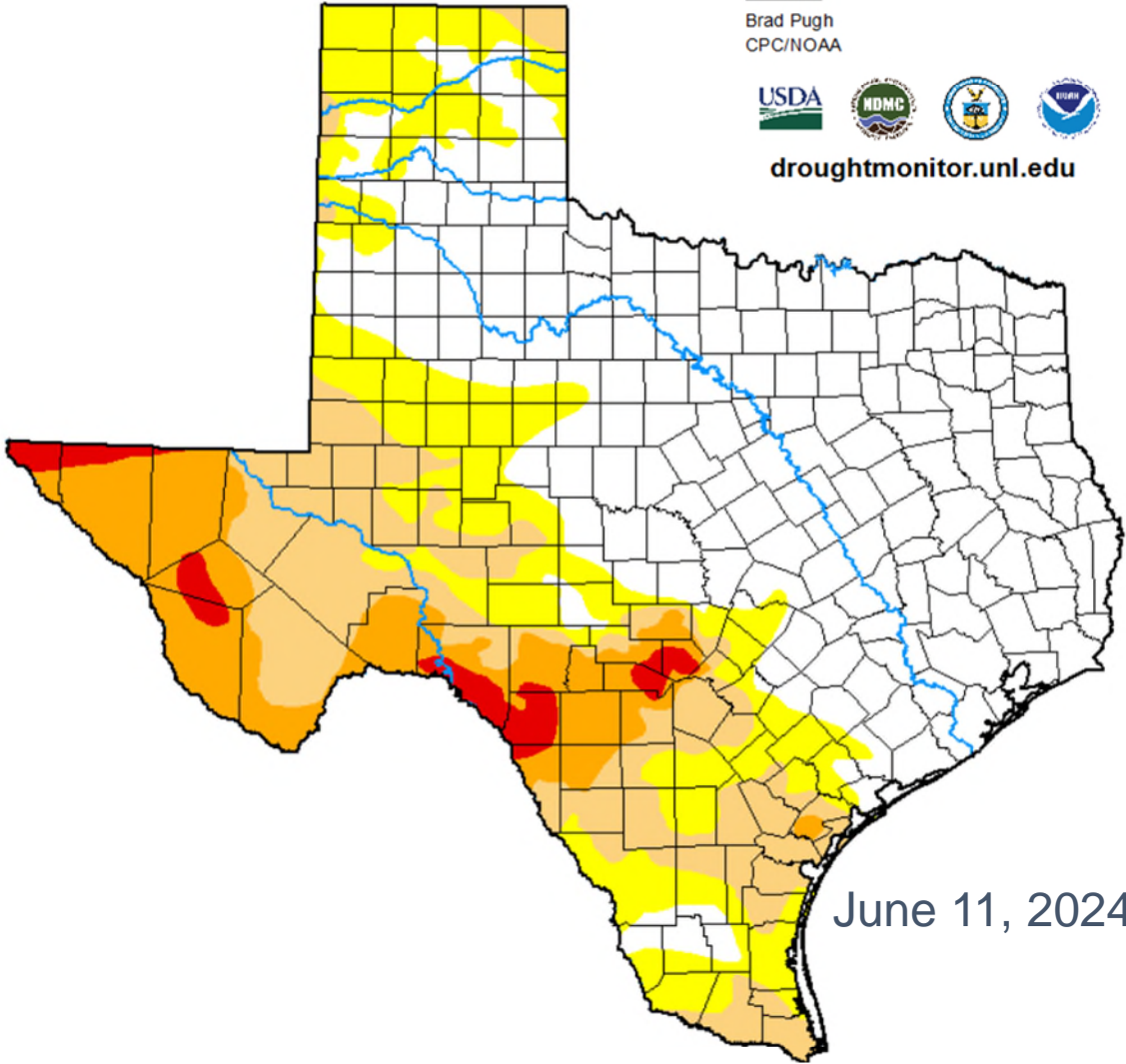
Author:
Brad Pugh
CPC/NOAA



droughtmonitor.unl.edu



June 13, 2023



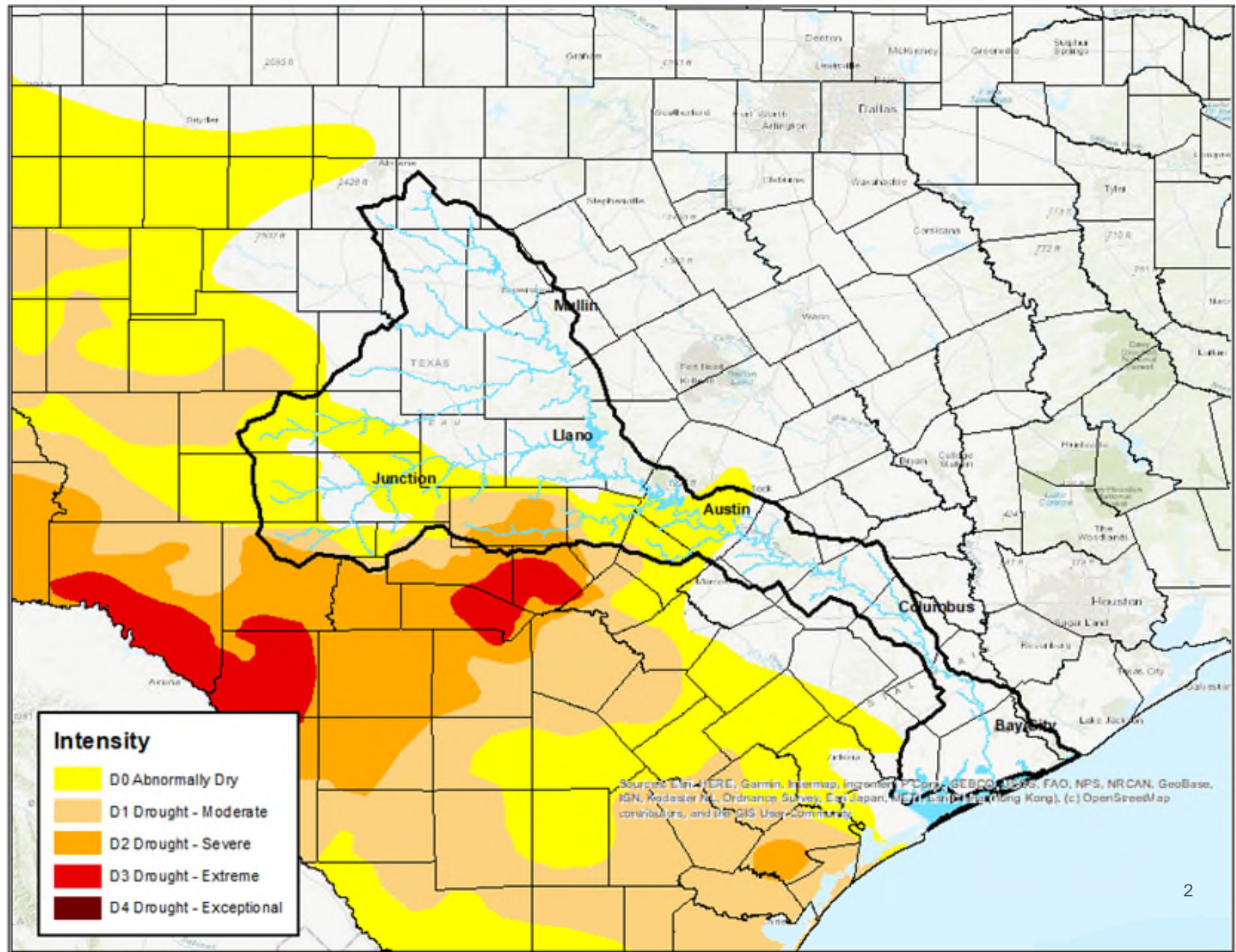
June 11, 2024

- Intensity:**
- None
 - D0 (Abnormally Dry)
 - D1 (Moderate Drought)
 - D2 (Severe Drought)
 - D3 (Extreme Drought)
 - D4 (Exceptional Drought)
 - No Data

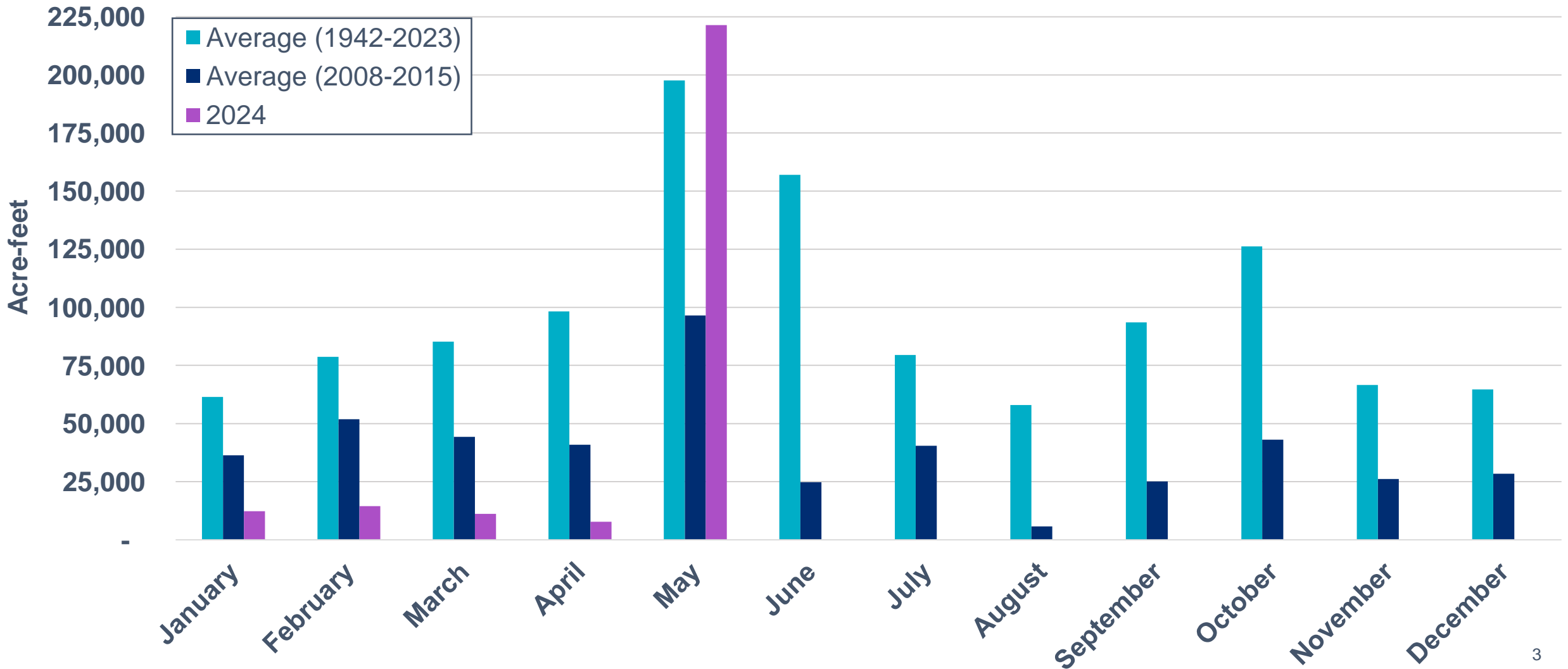
U.S. Drought Monitor

Lower Colorado River Basin

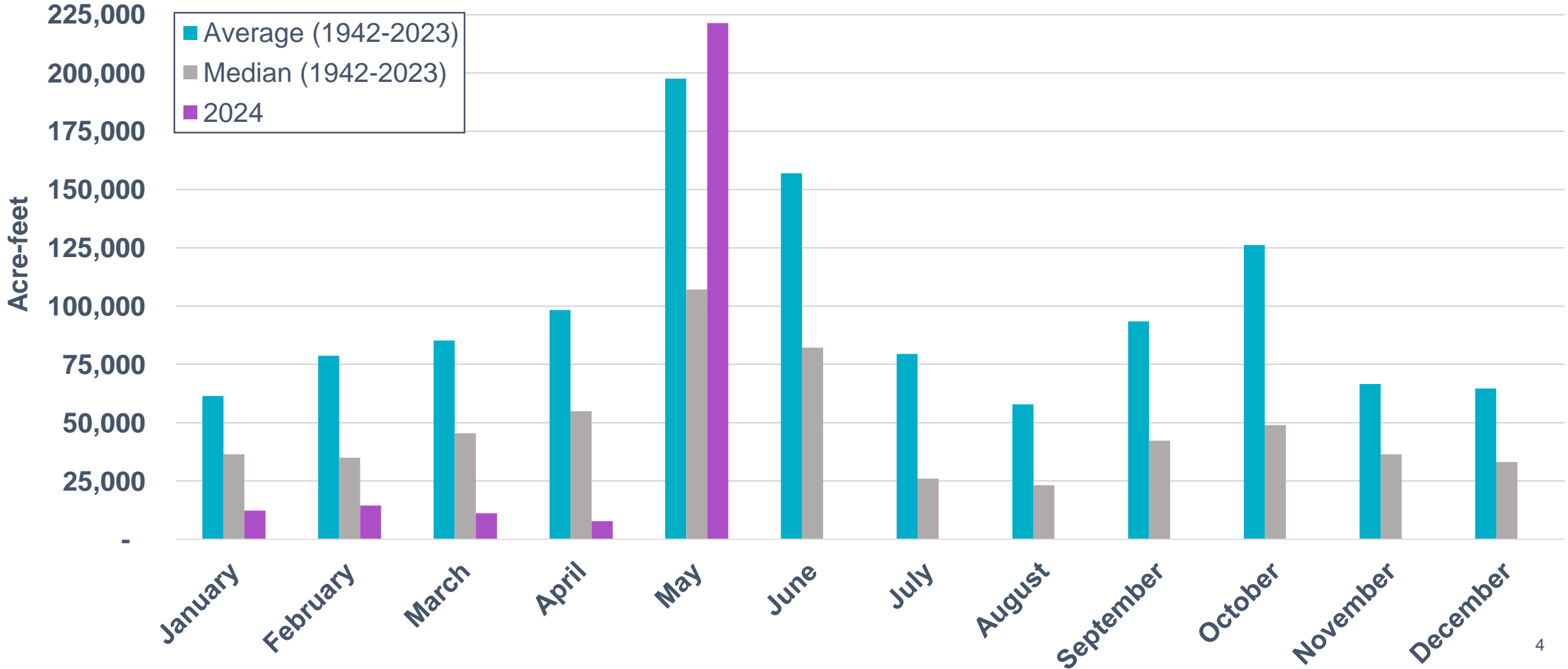
As of June 11, 2024



Water Flowing Into Lakes Buchanan and Travis



Water Flowing Into Lakes Buchanan and Travis – Median



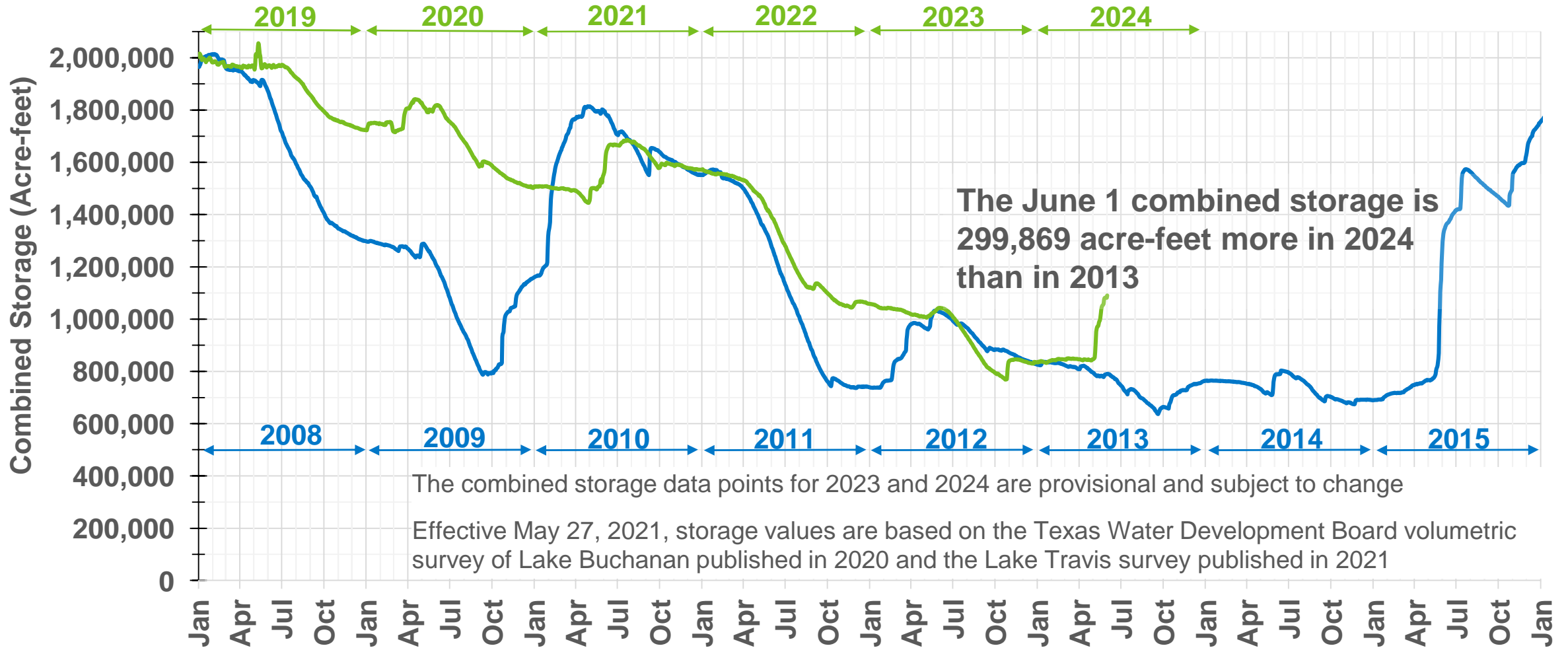
Increase in Combined Storage

From Midnight May 1 to 6:30 a.m. June 3

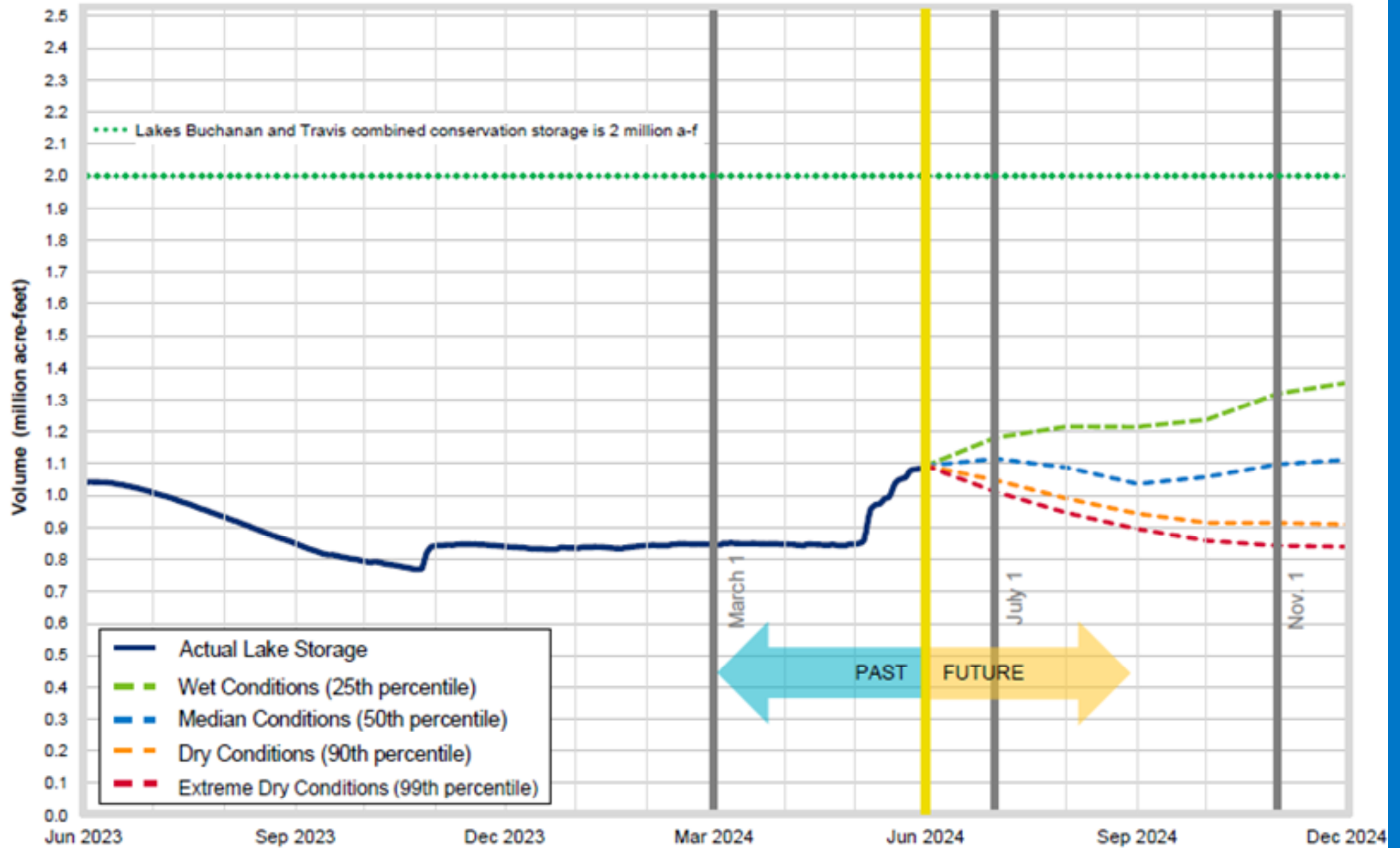
	Change in Lake Elevation (feet above mean sea level)	Change in Storage (acre-feet)
Lake Buchanan	13.55	226,066
Lake Travis	4.35	41,423
Combined Storage		267,489

Combined Storage of Lakes Buchanan and Travis

Comparison of 2019-2024 and 2008-2015



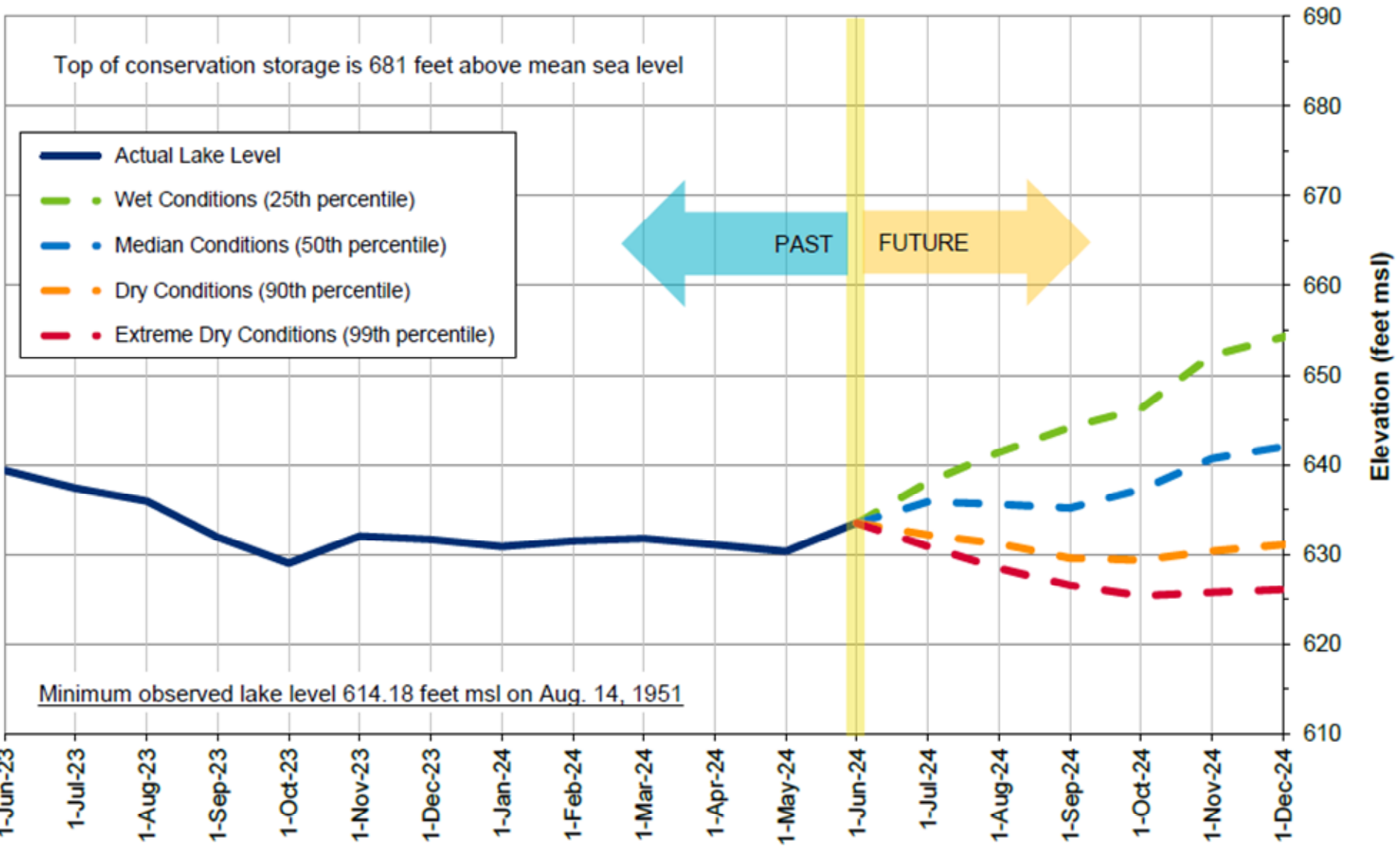
Lakes Buchanan and Travis Total Combined Storage Projections



Date: June 1, 2024

Note: One acre-foot equals 325,851 gallons

Lake Travis Level Projection*

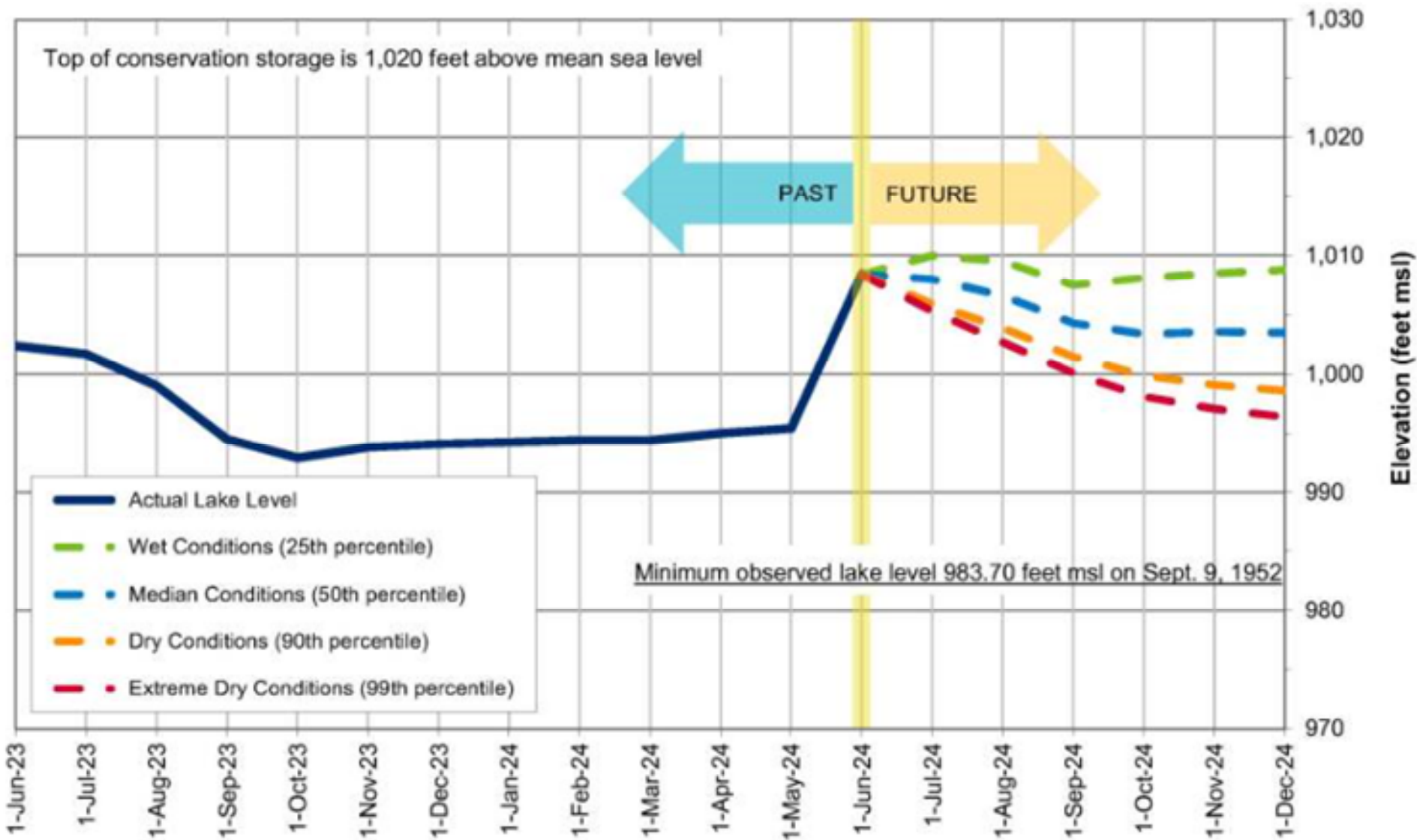


**Average for June:
669.22 ft msl**

**Historic low (1951):
614.18 feet msl**

*Based on results from the draft stochastic model under development to reflect provisions of the 2020 Water Management Plan

Lake Buchanan Level Projection*



**Average for June:
1,013.51 feet msl**

**Historic low (1952):
983.70 feet msl**

Lake Level Comparisons

	June 1, 2023	June 1, 2024
Lake Travis (feet msl)	639.23	633.30
Lake Buchanan (feet msl)	1,002.50	1,008.45
Combined storage* (a-f)	1,042,840	1,093,844

*For purposes of the 2020 Water Management Plan, the combined storage is defined as the total of the daily average volume of water in lakes Buchanan and Travis. This determination excludes any water in Lake Buchanan above elevation 1,018 feet msl in the months of May through October or above 1,020 feet msl in the months of November through April and any water in Lake Travis above elevation 681 feet msl.



LCRA

ENERGY • WATER • COMMUNITY SERVICES