



StratMap image from January 2021



Zone A

2241

2341

**Lake Buchanan
Commercial Dredge and Fill Zone
Supplemental Imagery**

Zone A

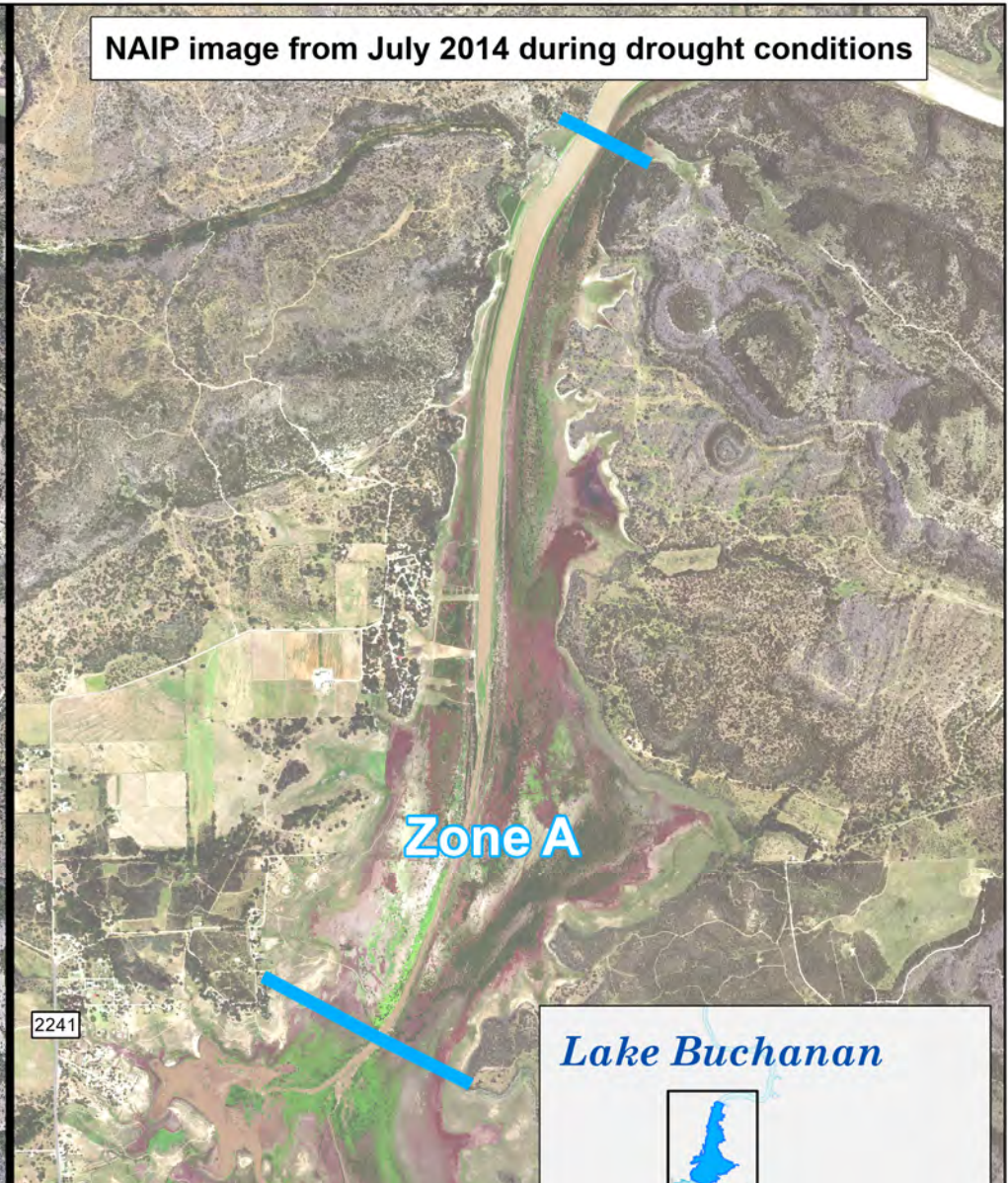
0 2,000 4,000 Feet



Effective Jan. 1, 2022

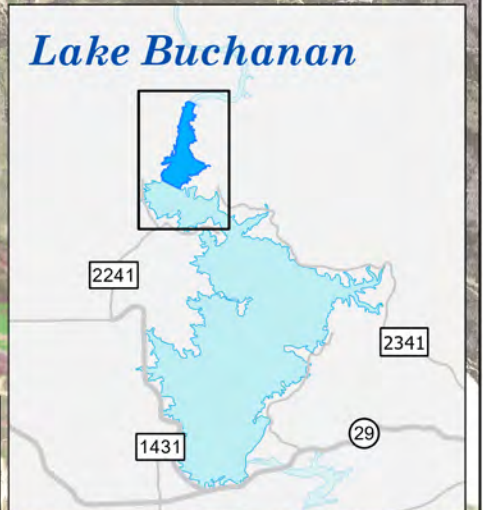


NAIP image from July 2014 during drought conditions



Zone A

2241



Tier III commercial dredge and fill activities may only occur within designated zones. A permit is required. See www.lcra.org/hldo for other zones and more information.