



# Demographic Themes: Austin and Central Texas

Planning and Public Policy Committee Meeting  
Nov. 16, 2021

Ryan Robinson  
Demographer

## Total Population Gain, Biggest Growth States: 2010 to 2020

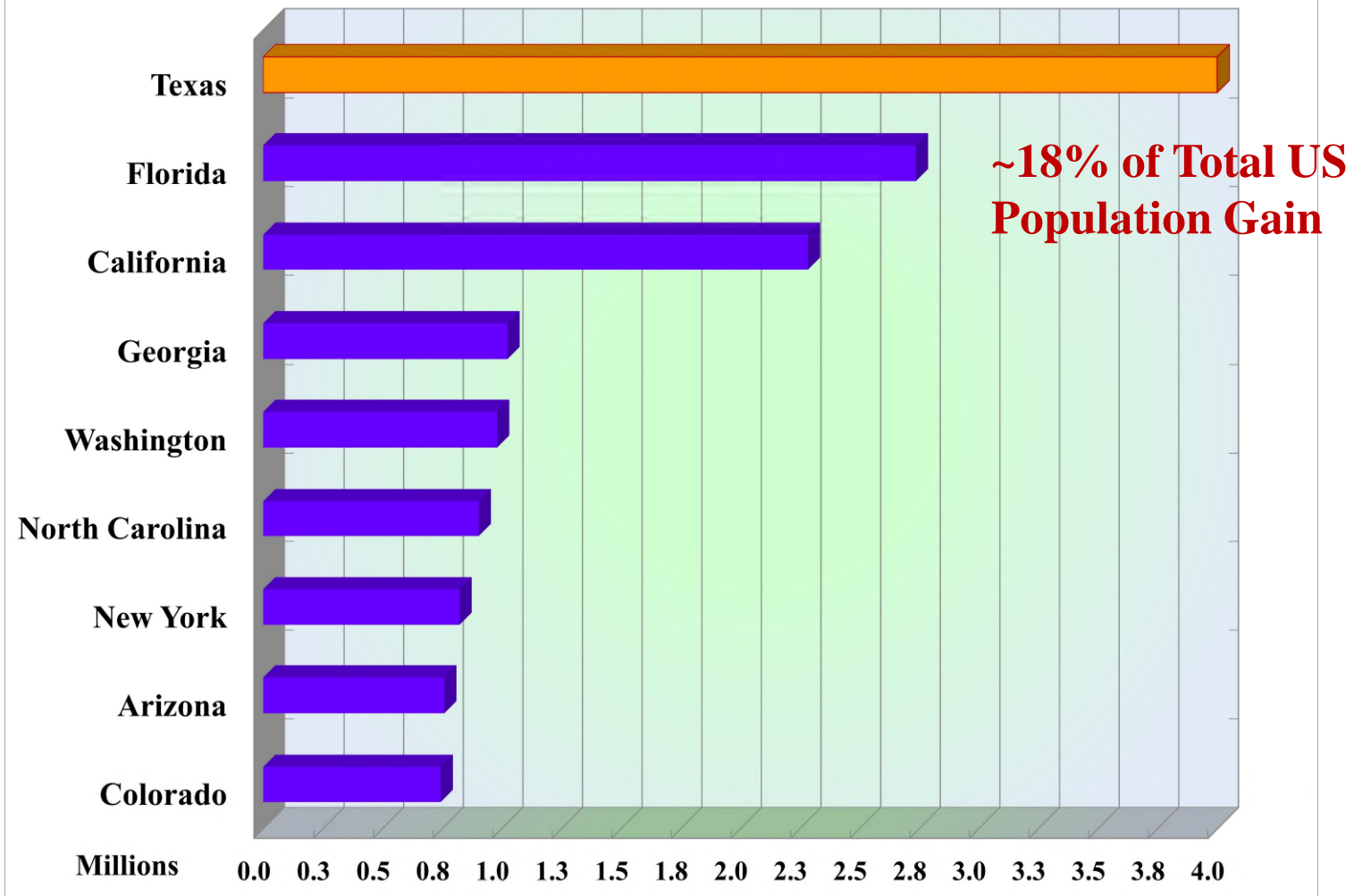
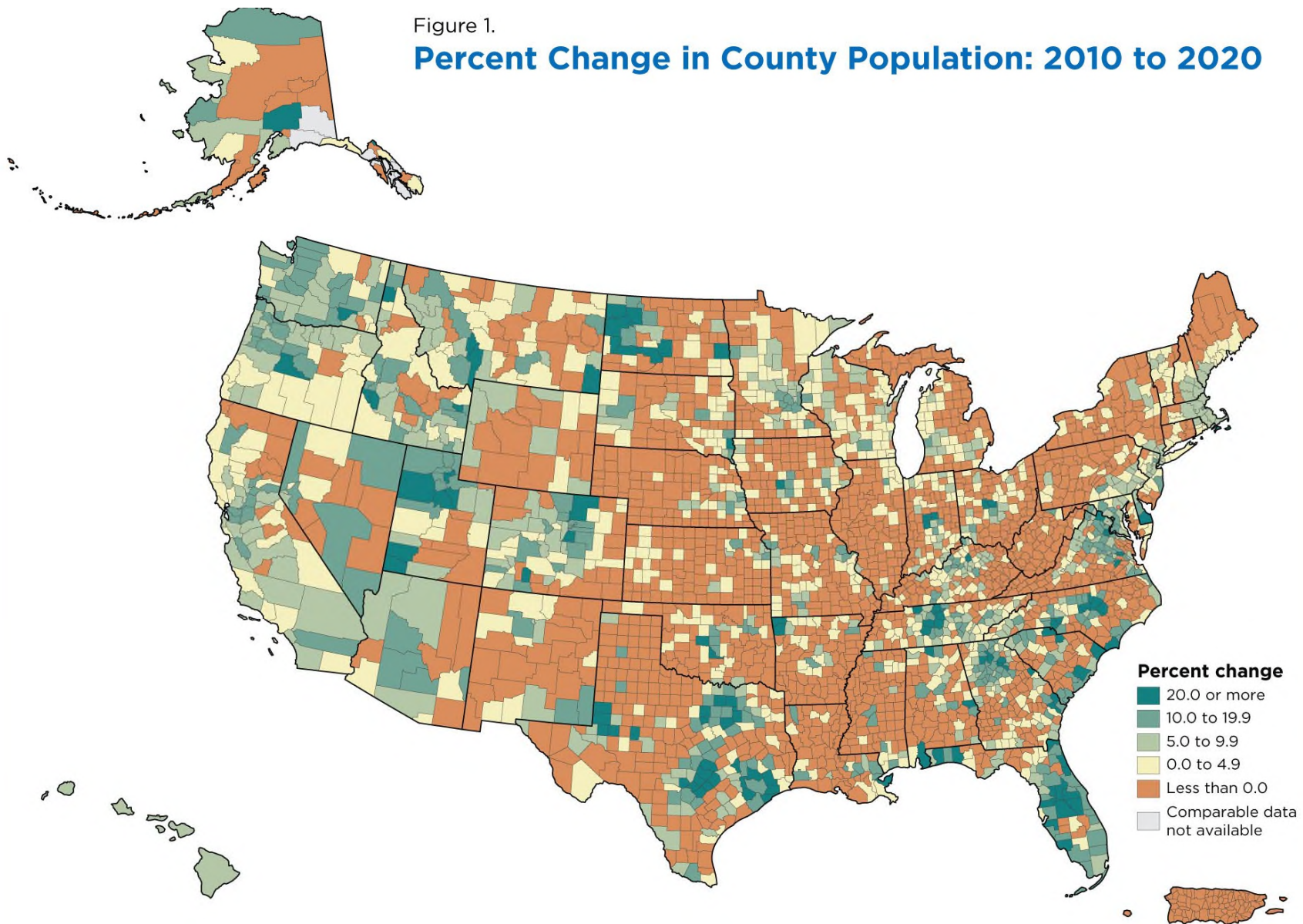
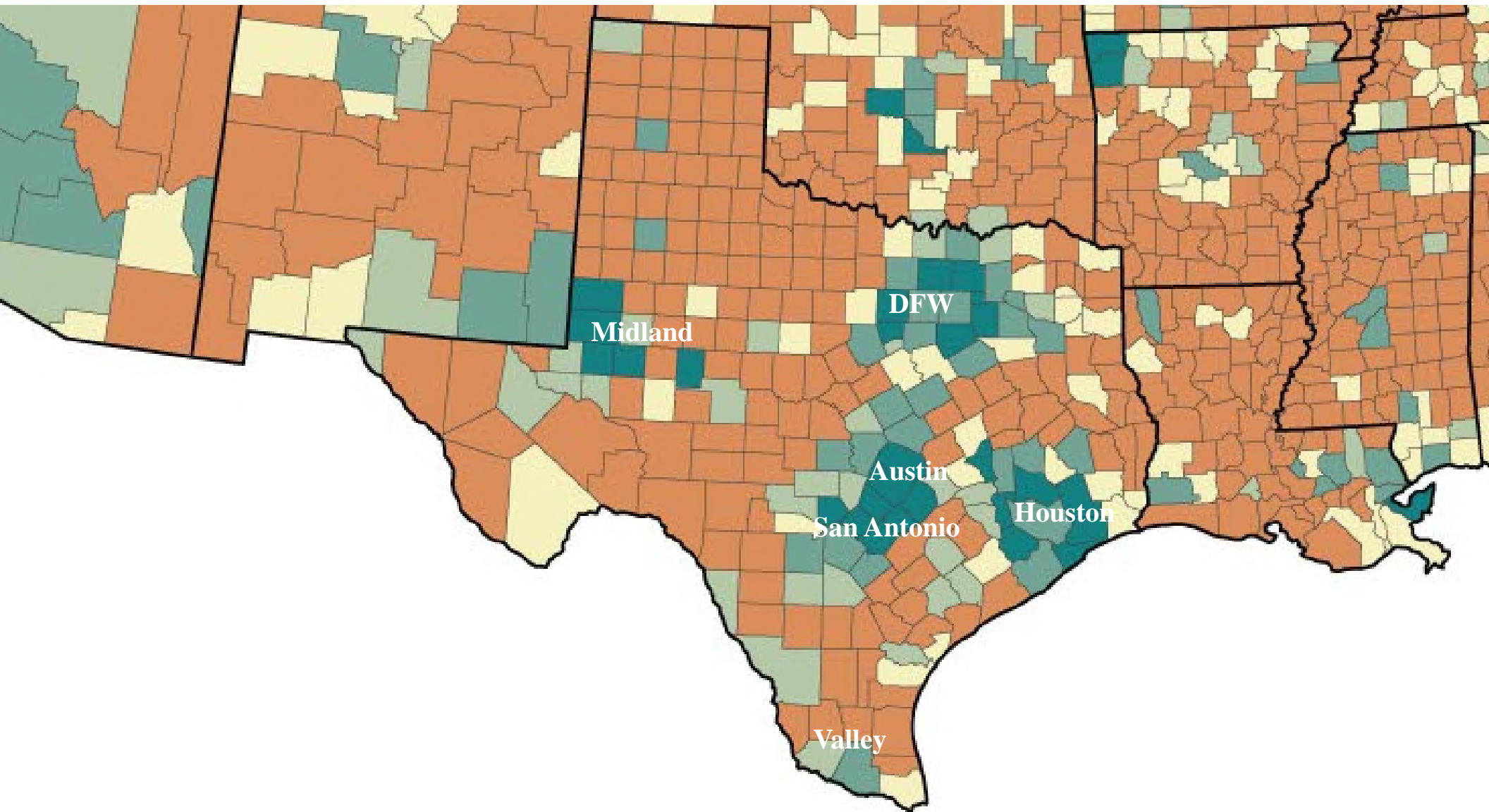
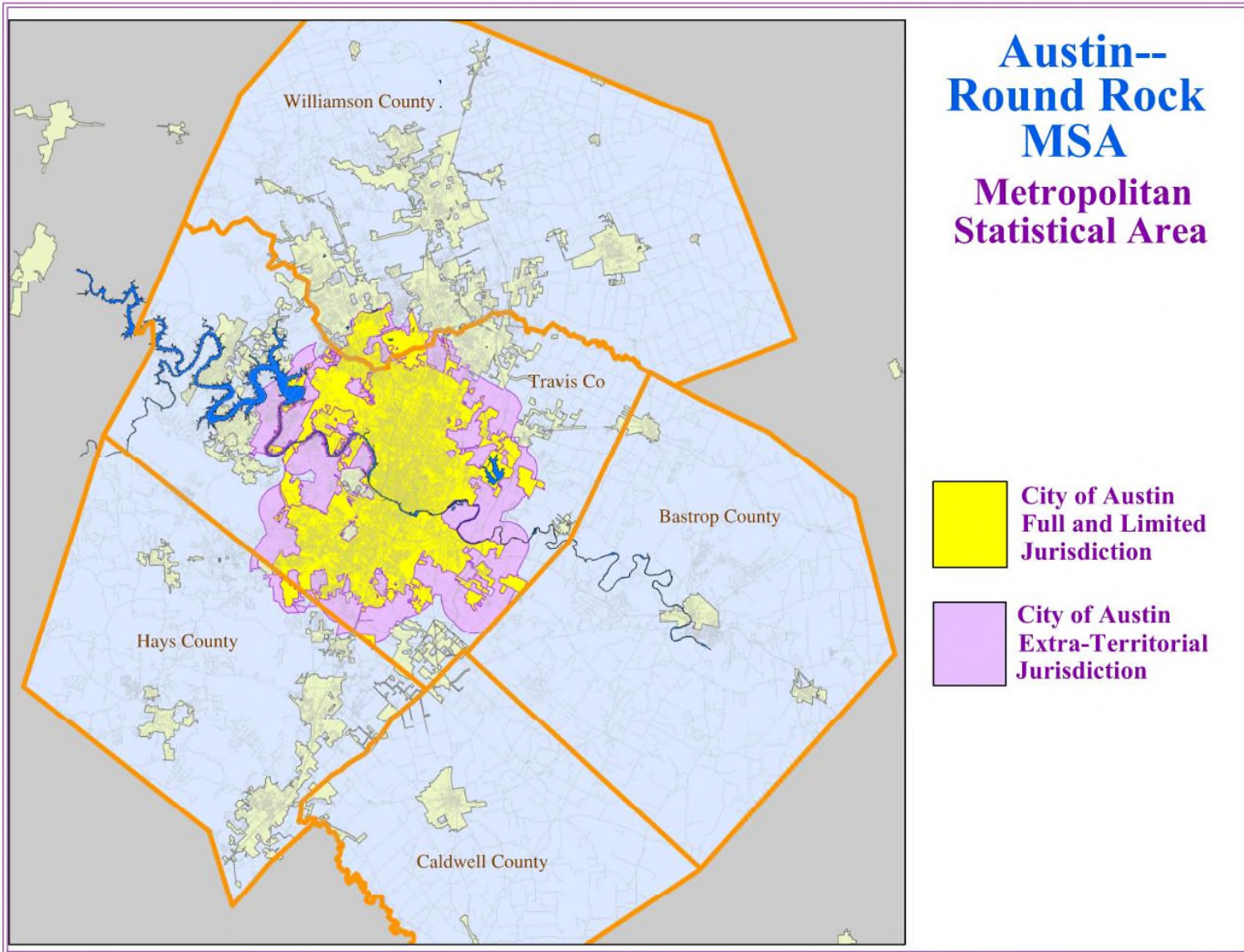


Figure 1.

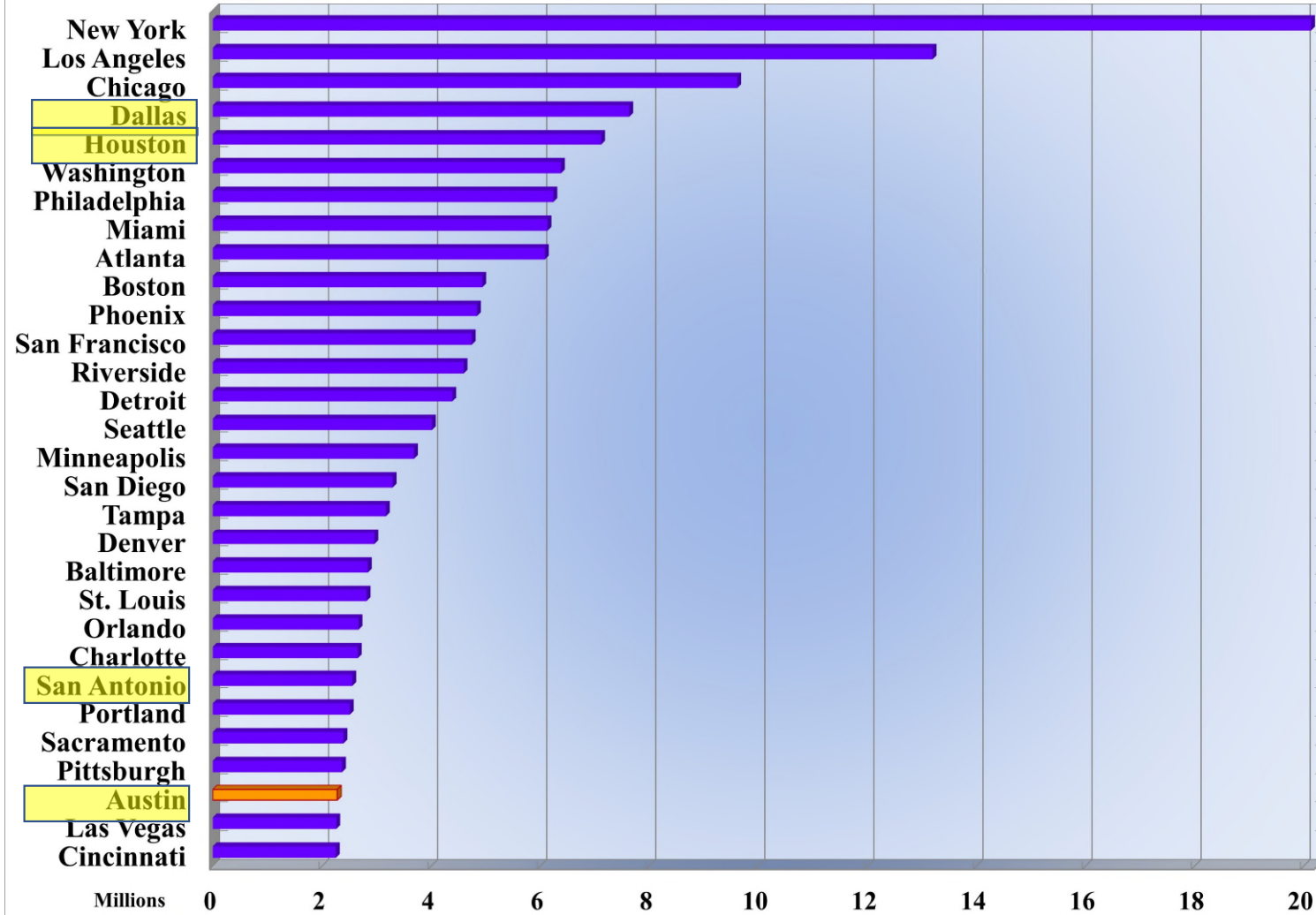
## Percent Change in County Population: 2010 to 2020



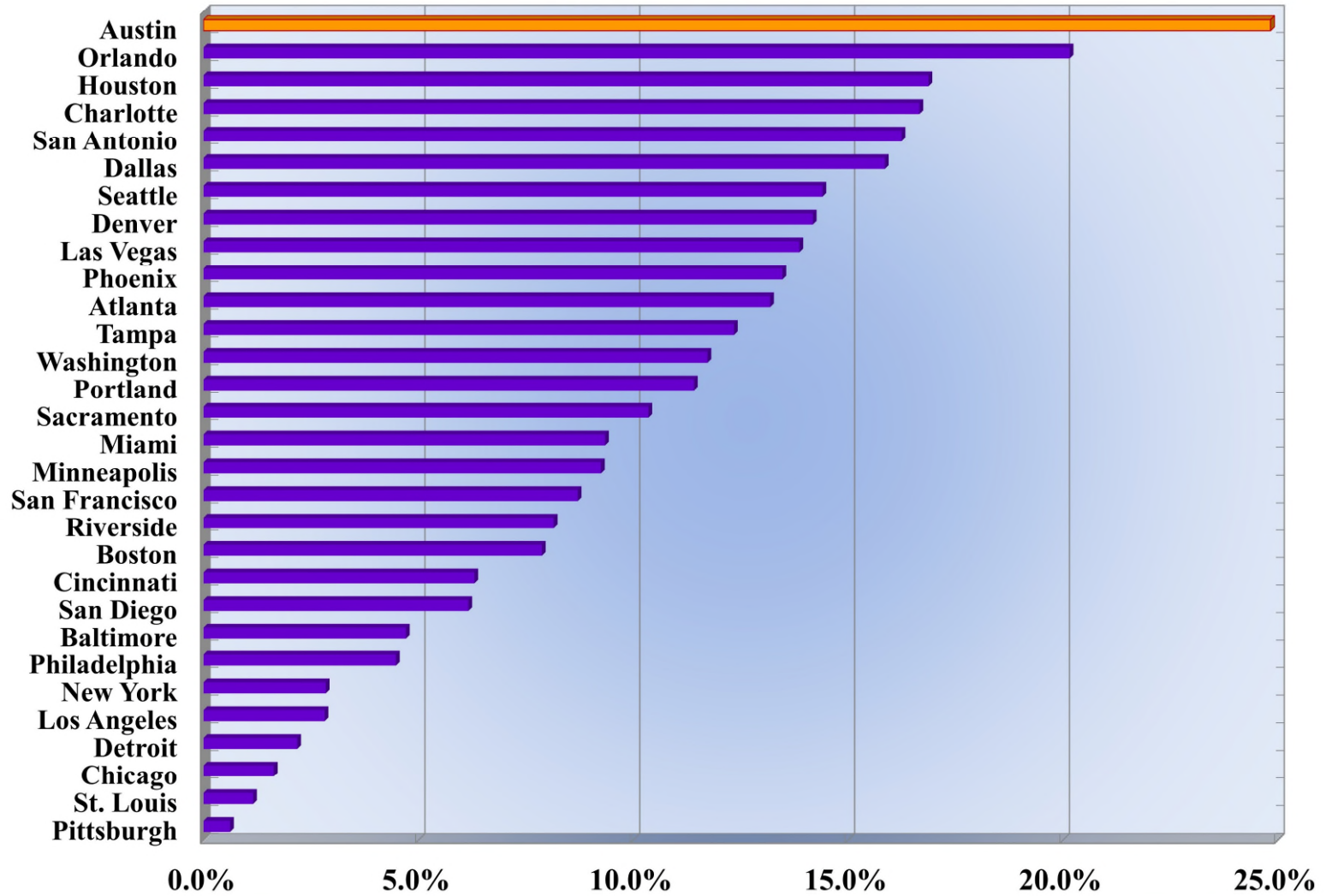




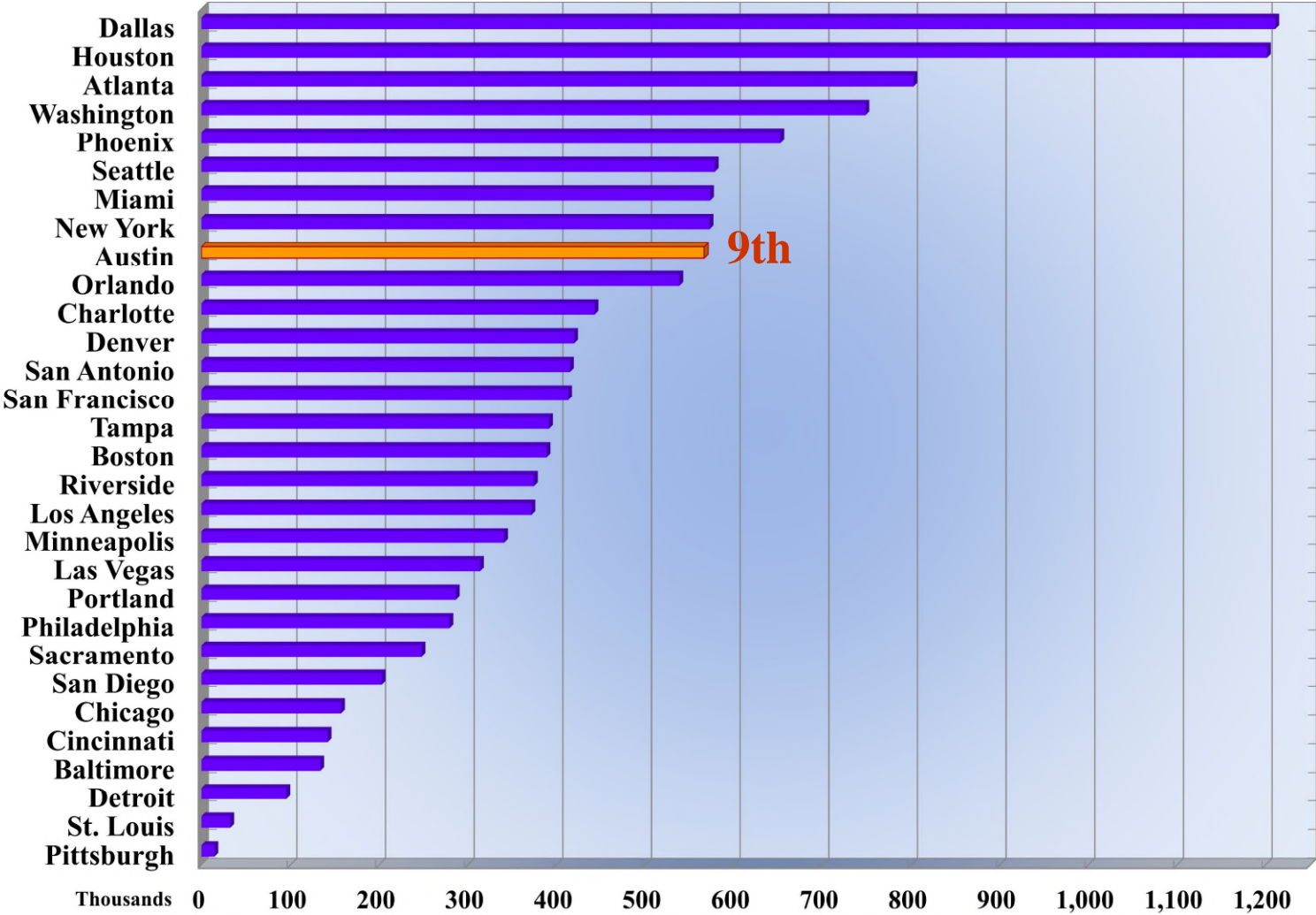
## 30 Largest US Metropolitan Areas: 2020



## Percent Population Gain, 30 Largest US Metros: 2010 to 2020



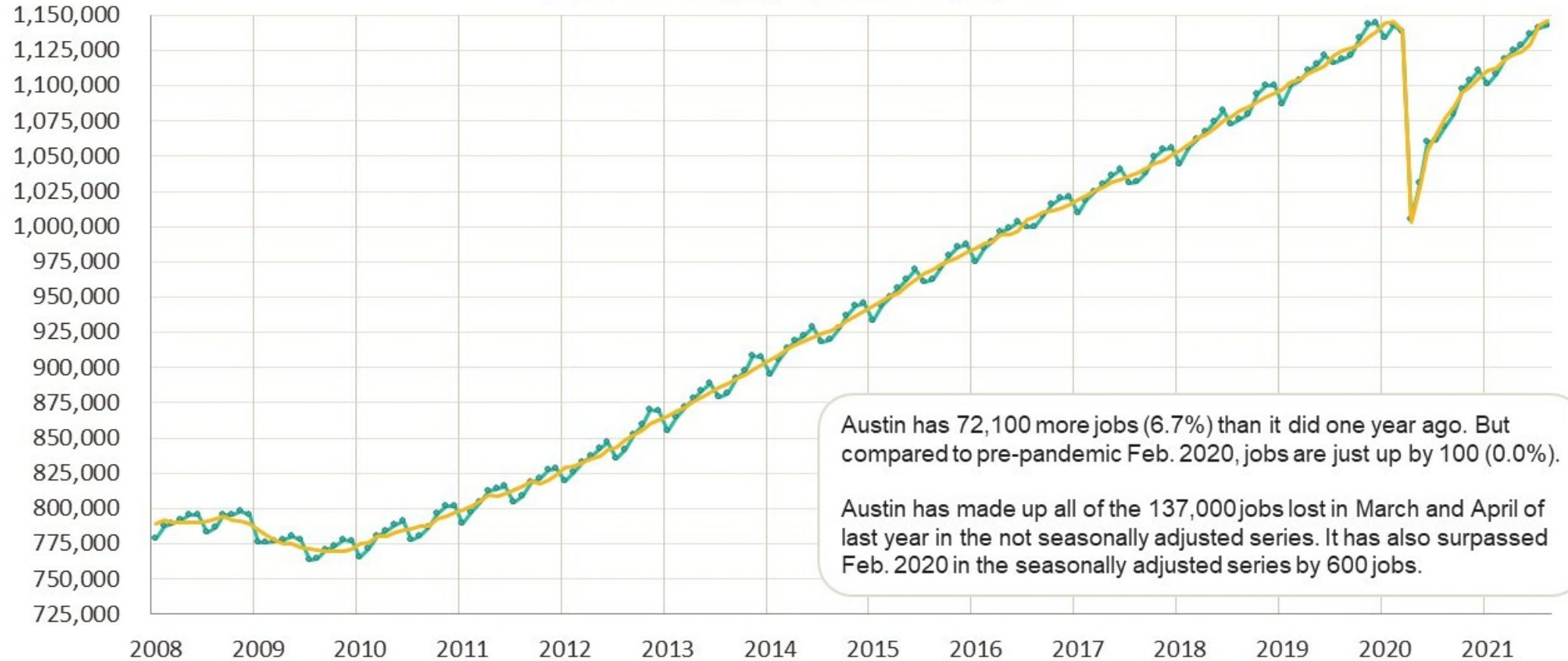
## Population Gain, 30 Largest US Metropolitan Areas: 2010 to 2020





# Nonfarm payroll jobs Austin MSA

Not seasonally adj    Seasonally adjusted



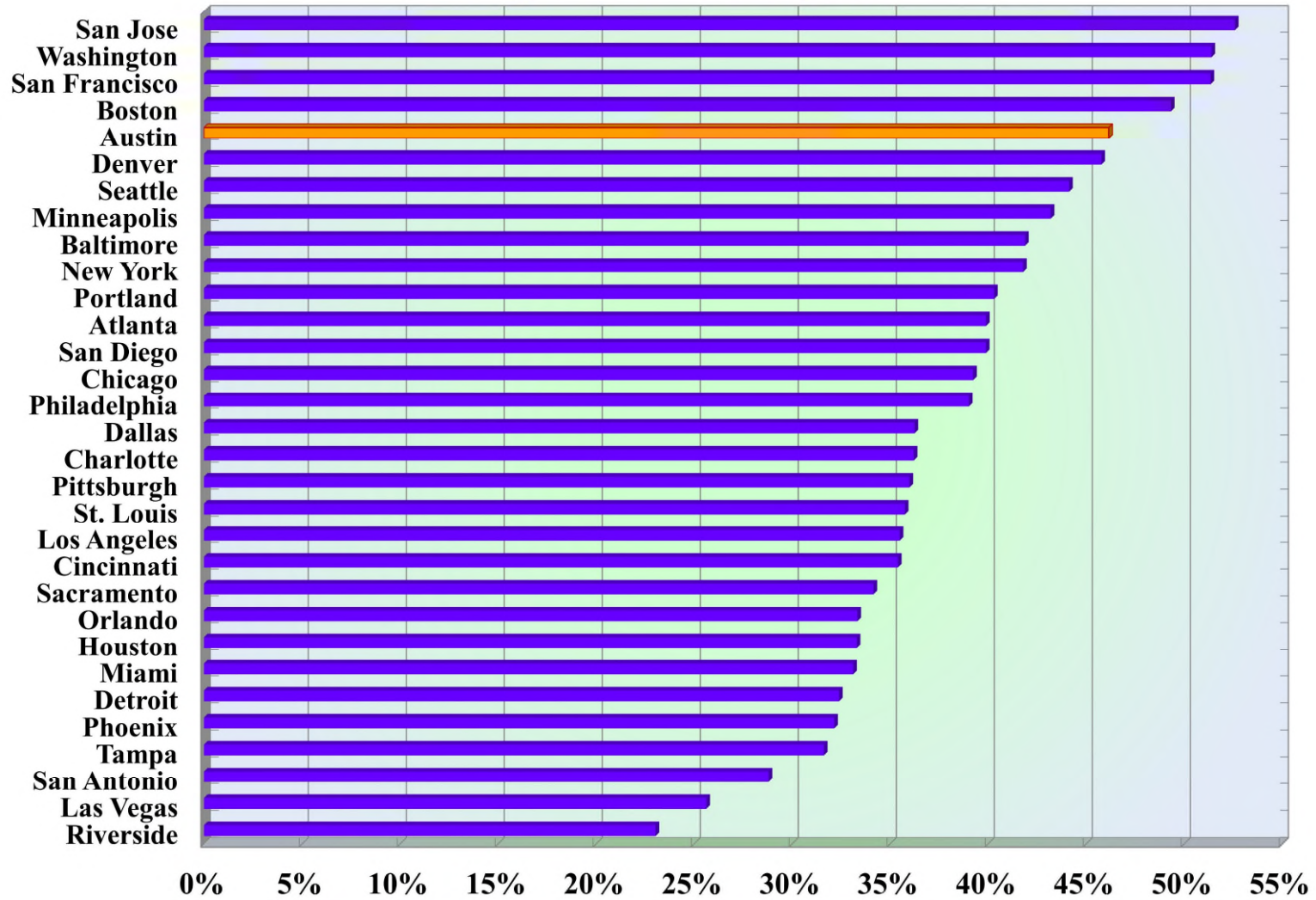
Source: Texas Workforce Commission, Current Employment Statistics (CES).

## Best performing among the top 50 metros (COVID-19)

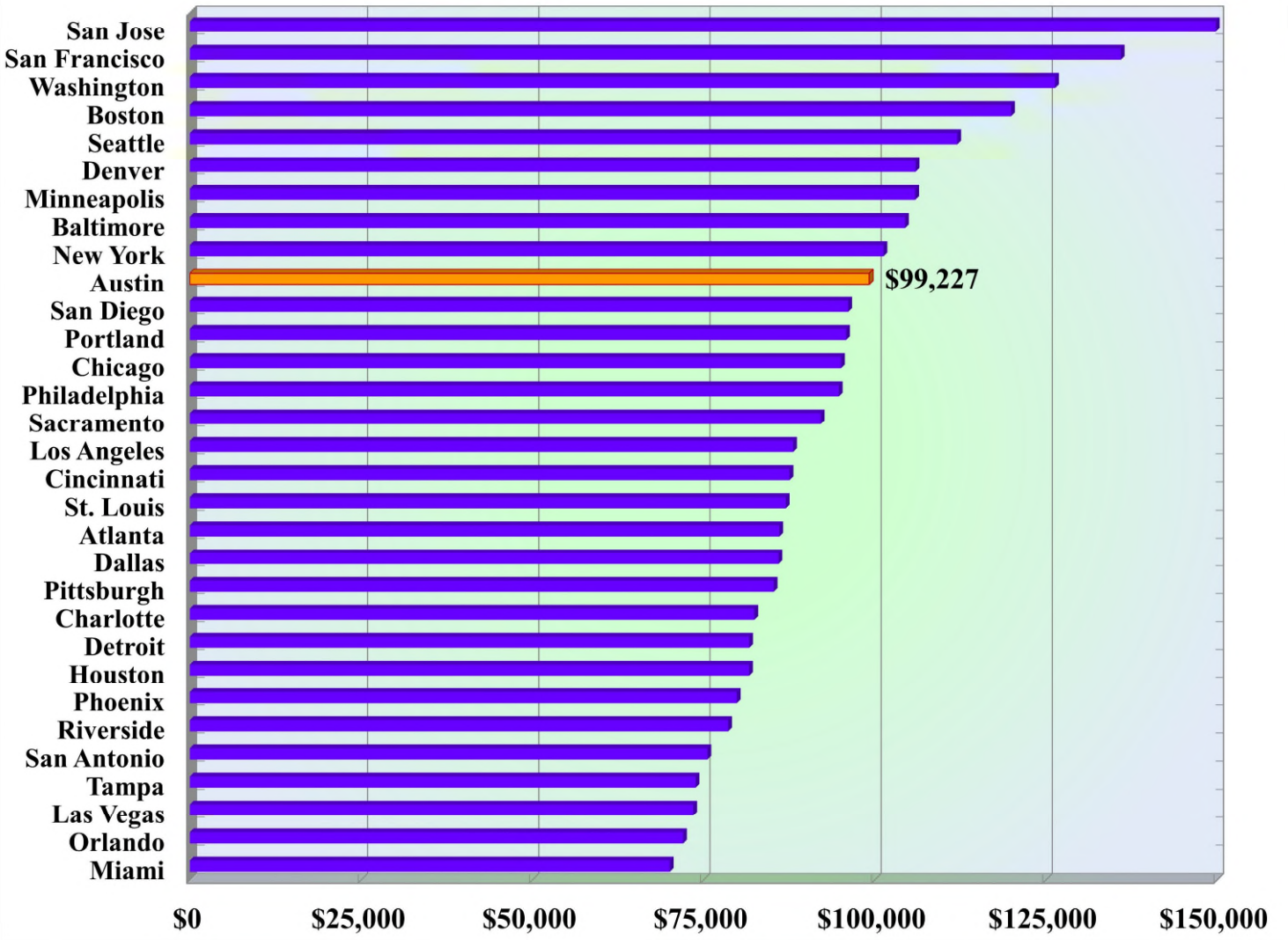
	Nonfarm payroll jobs		Feb. 2020-Aug. 2021		Rank
	February 2020	August 2021	Difference	Percent change	
Salt Lake City MSA	758,500	774,400	15,900	2.1%	1
Kansas City MSA	1,093,500	1,094,200	700	0.1	2
Dallas MDiv	2,735,400	2,736,400	1,000	0.0	3
Austin MSA	1,142,400	1,142,500	100	0.0	4
Jacksonville MSA	732,000	729,200	-2,800	-0.4	5
Indianapolis MSA	1,087,200	1,081,900	-5,300	-0.5	6
Phoenix MSA	2,233,500	2,217,300	-16,200	-0.7	7
Denver MSA	1,539,700	1,526,700	-13,000	-0.8	8
Tampa MSA	1,411,100	1,397,800	-13,300	-0.9	9
Cincinnati MSA	1,110,400	1,097,000	-13,400	-1.2	10

Source: U.S. Bureau of Labor Statistics, CES.

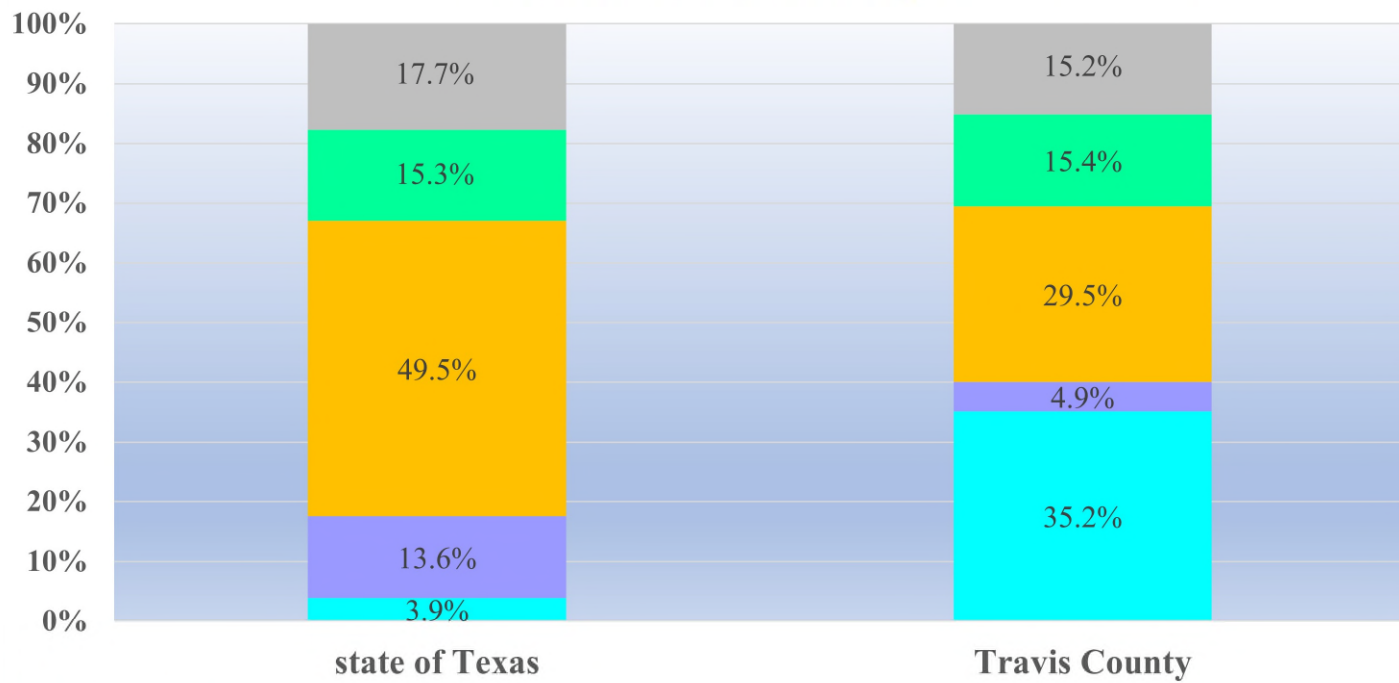
## Educational Attainment, Bachelors Degree Plus, Largest US Metros, 2019



# Median Family Income, Largest US Metros, 2019



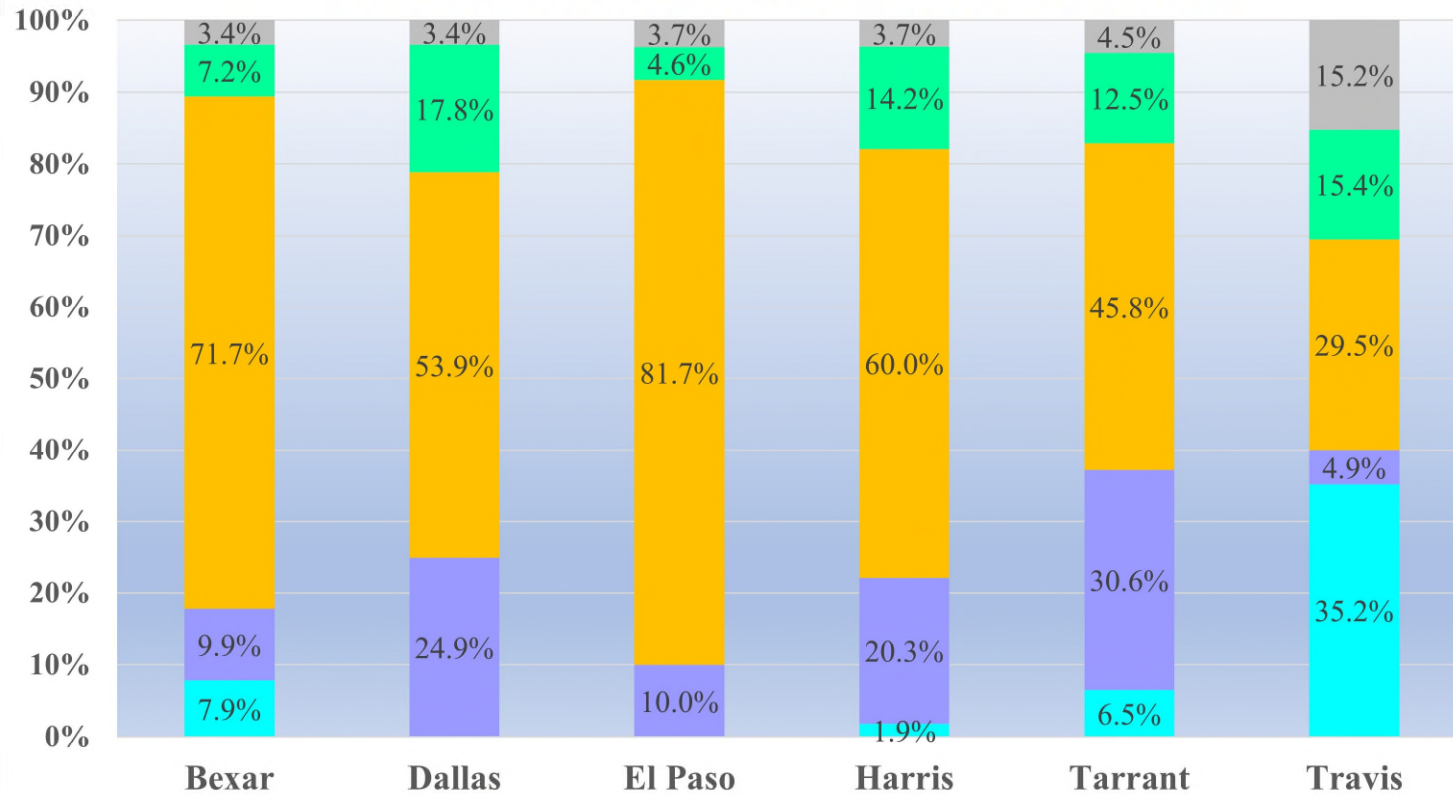
## Share of Population Growth, 2010 to 2020, by Race and Ethnicity



Data Source: 2010 Census and 2020 Census from the Census Bureau.

■ White  
 ■ Black  
 ■ Hispanic  
 ■ Asian  
 ■ Multiple/Other

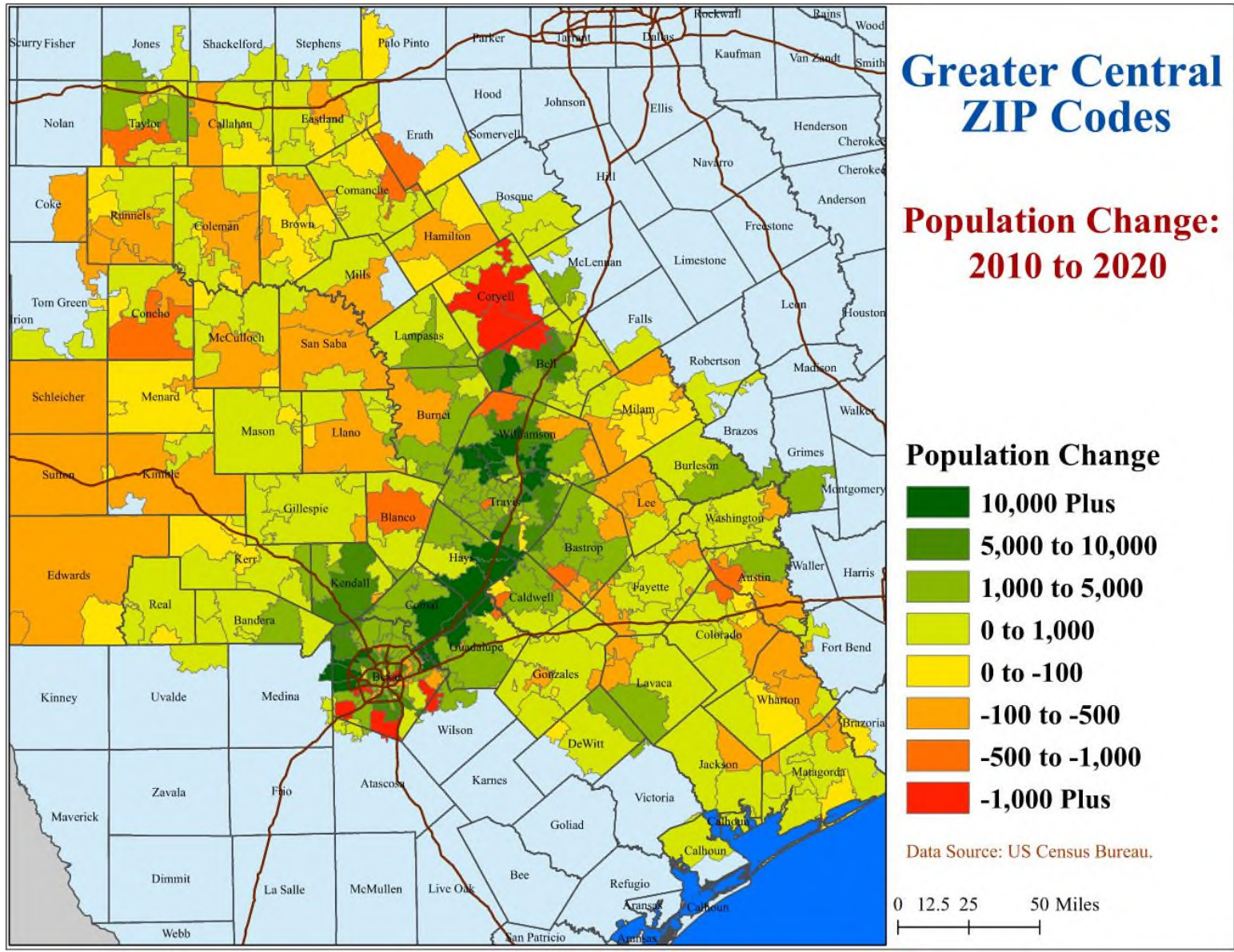
## Share of Positive Population Growth, 2010 to 2020, by Race and Ethnicity, Big Six Texan Urban Counties



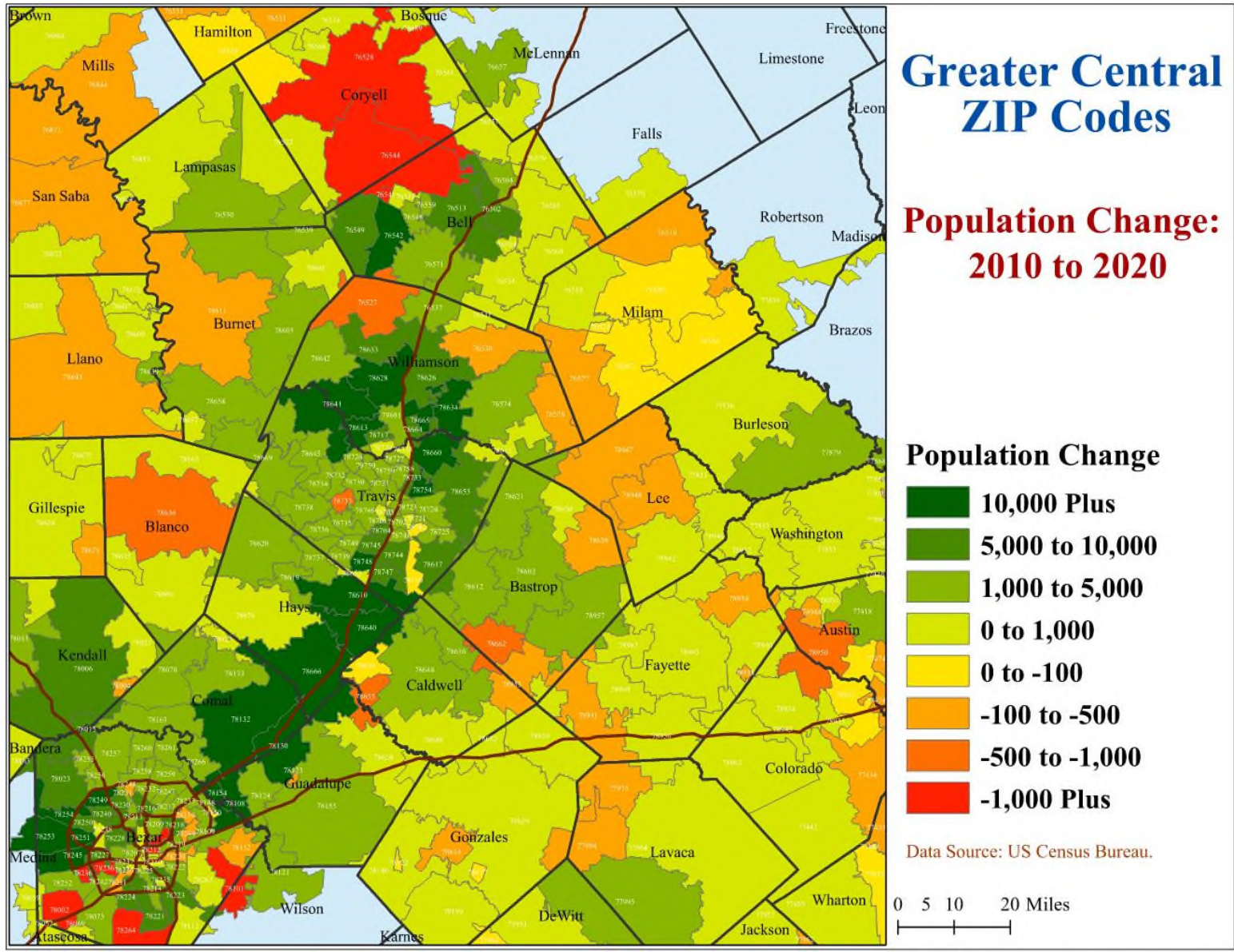
Data Source: 2010 Census and 2020 Census from the Census Bureau.

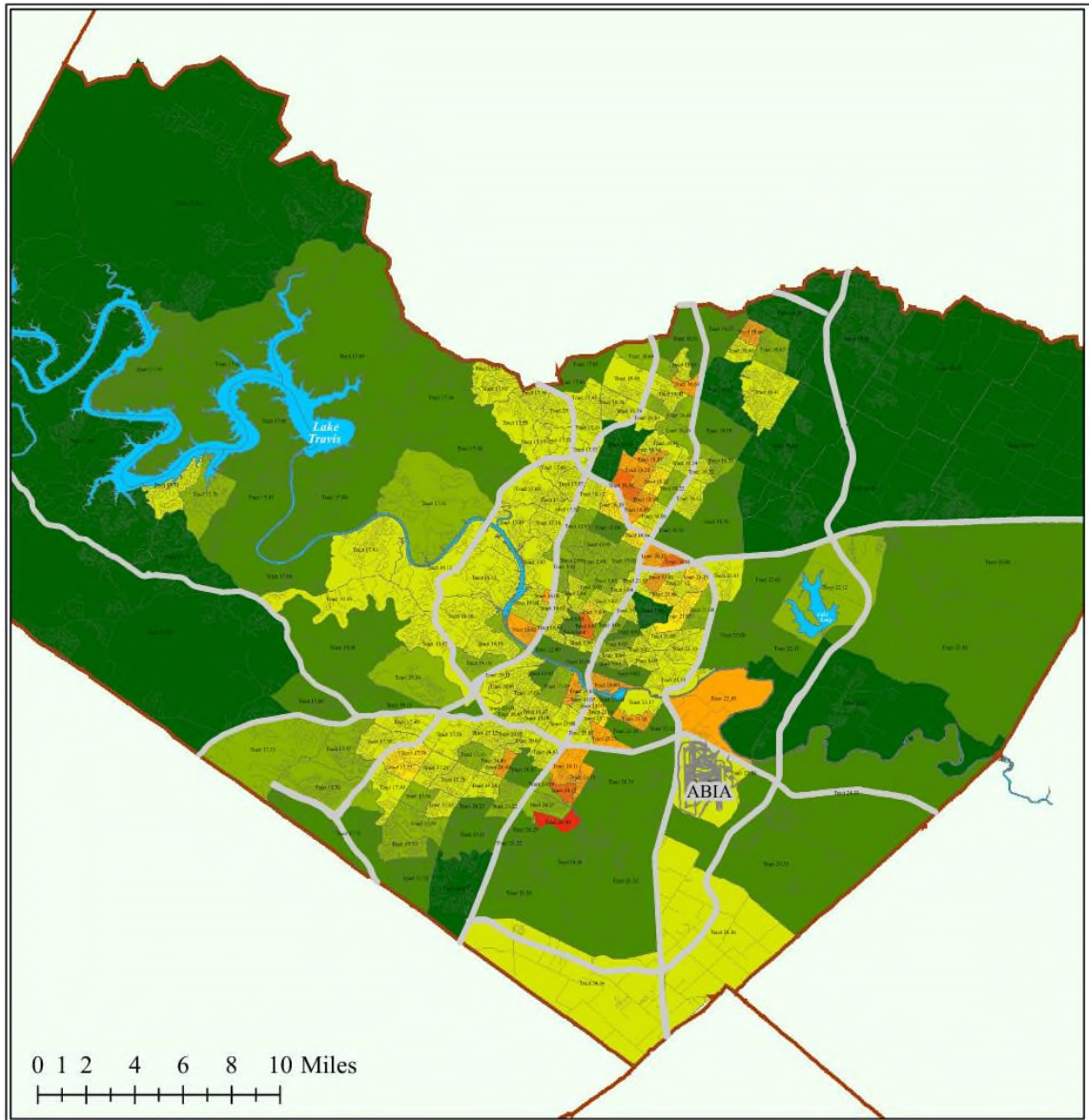
■ White   
 ■ Black   
 ■ Hispanic   
 ■ Asian   
 ■ Multiple











# Population Growth and Decline: 2010 to 2020

## Travis County

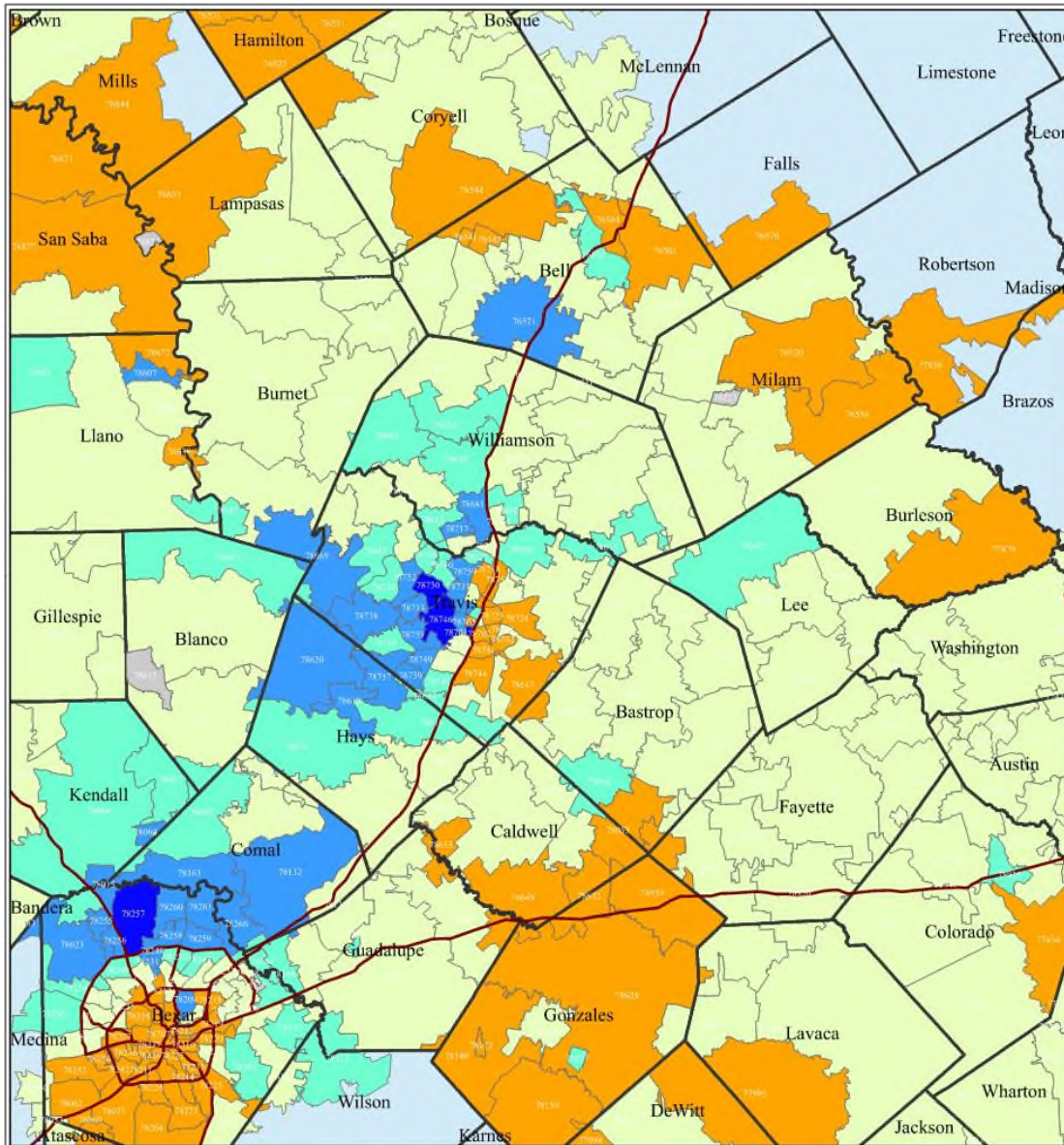
Decennial data from the US Census Bureau

Change in a Census Tract's Total Population from 2010 to 2020 at the 2010 tract-level

- 5,000 Plus
- 1,000 to 5,000
- 500 to 1,000
- 0 to 500
- 0 to -100
- 100 to -500
- 500 to -1,000
- 1,000 Plus

0 1 2 4 6 8 10 Miles  
 |-----|-----|-----|-----|-----|

Data Source: Census 2020, P.L. 94-171, Redistricting File. **AUSTIN TRANSIT PARTNERSHIP**



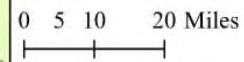
# Landscape of Income: 2012

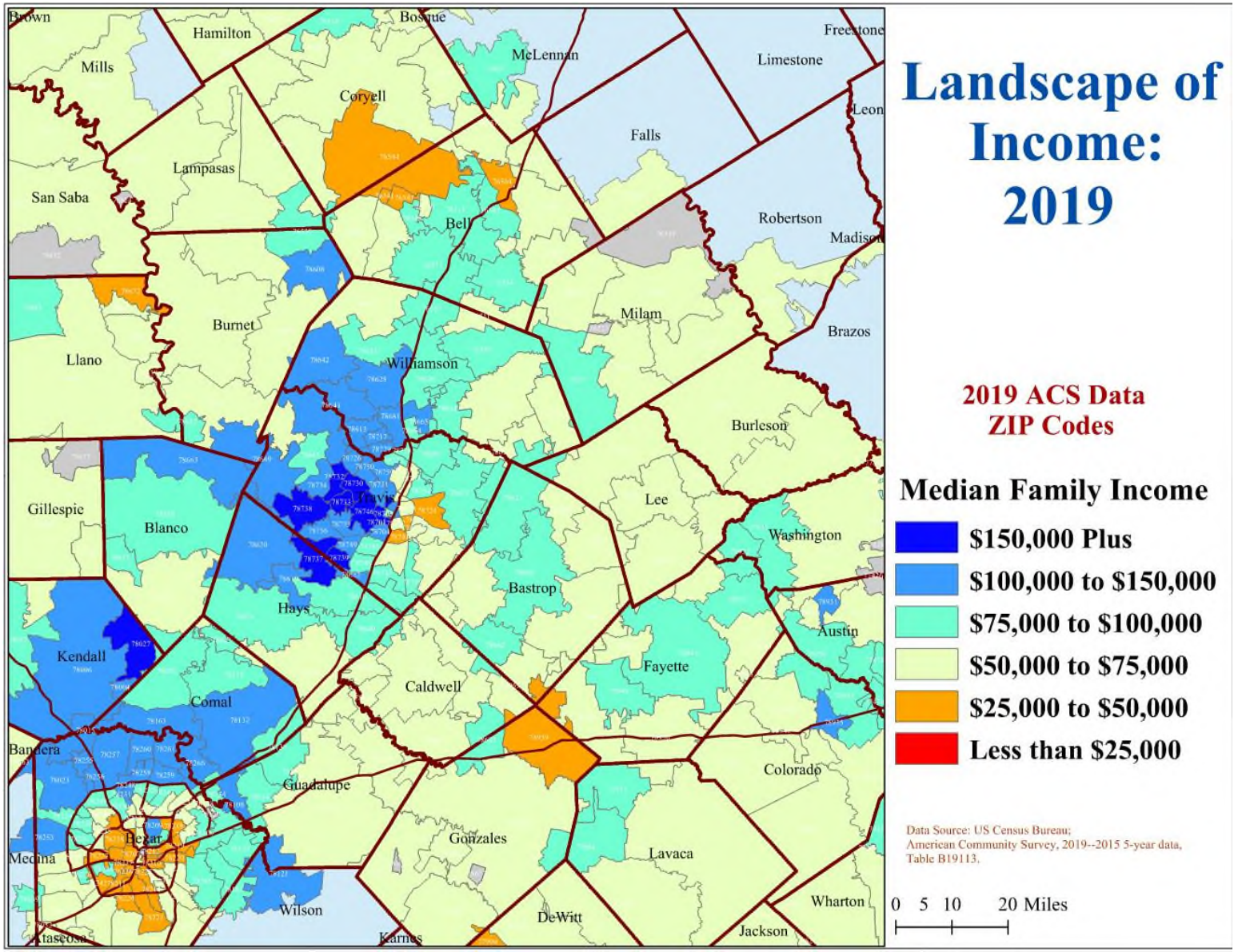
2012 ACS Data  
ZIP Codes

## Median Family Income

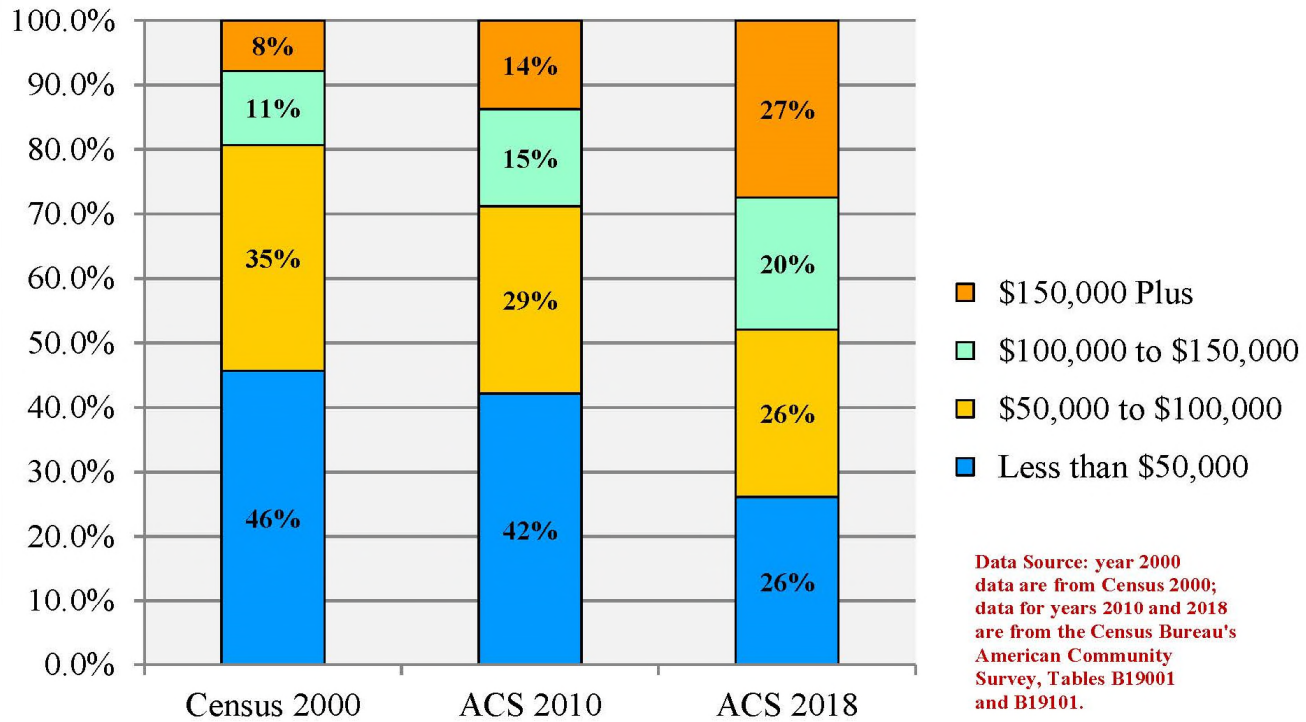
- \$150,000 Plus
- \$100,000 to \$150,000
- \$75,000 to \$100,000
- \$50,000 to \$75,000
- \$25,000 to \$50,000
- Less than \$25,000

Data Source: US Census Bureau;  
American Community Survey, 2010-2015 5-year data,  
Table B19113.

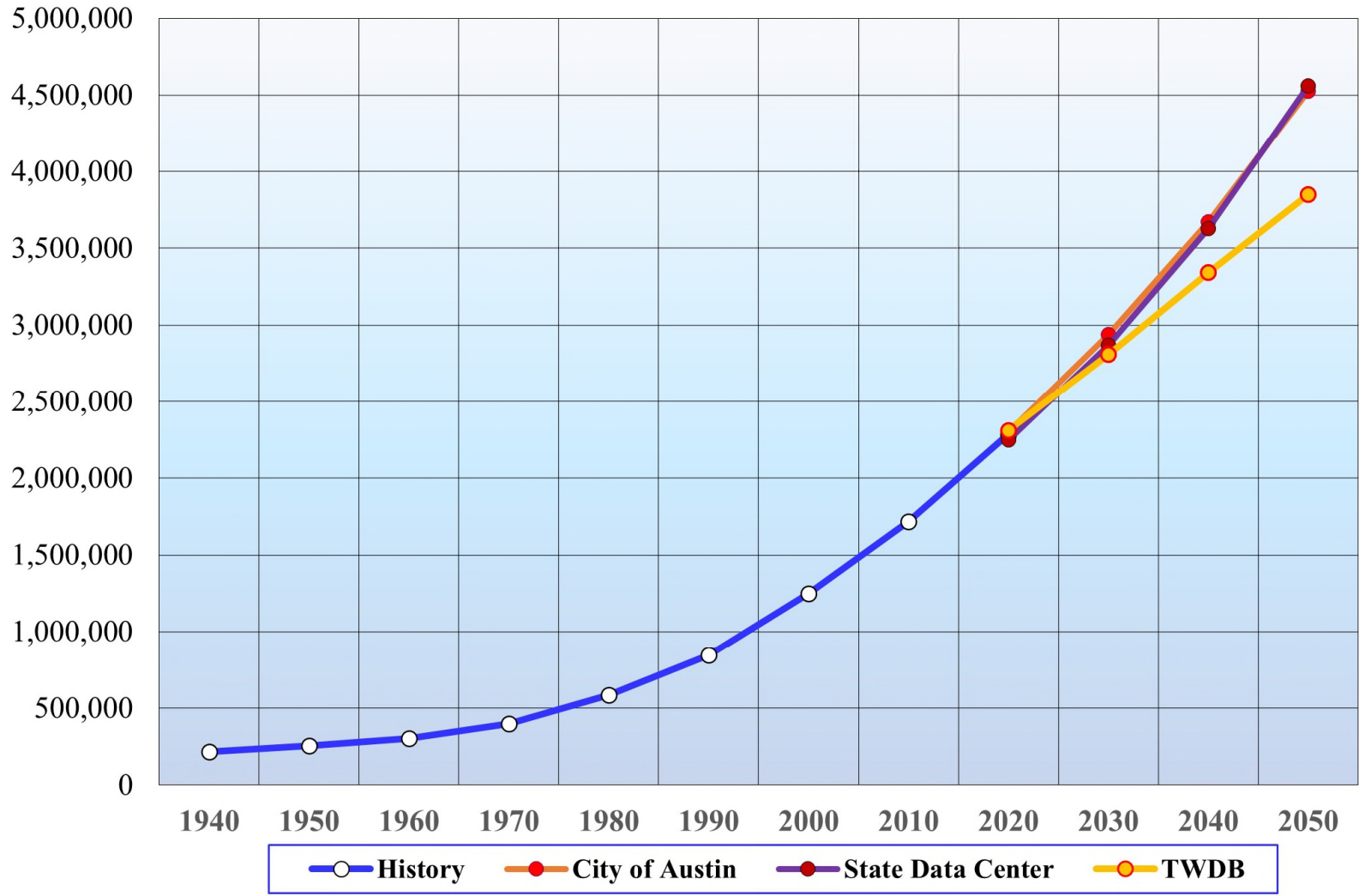




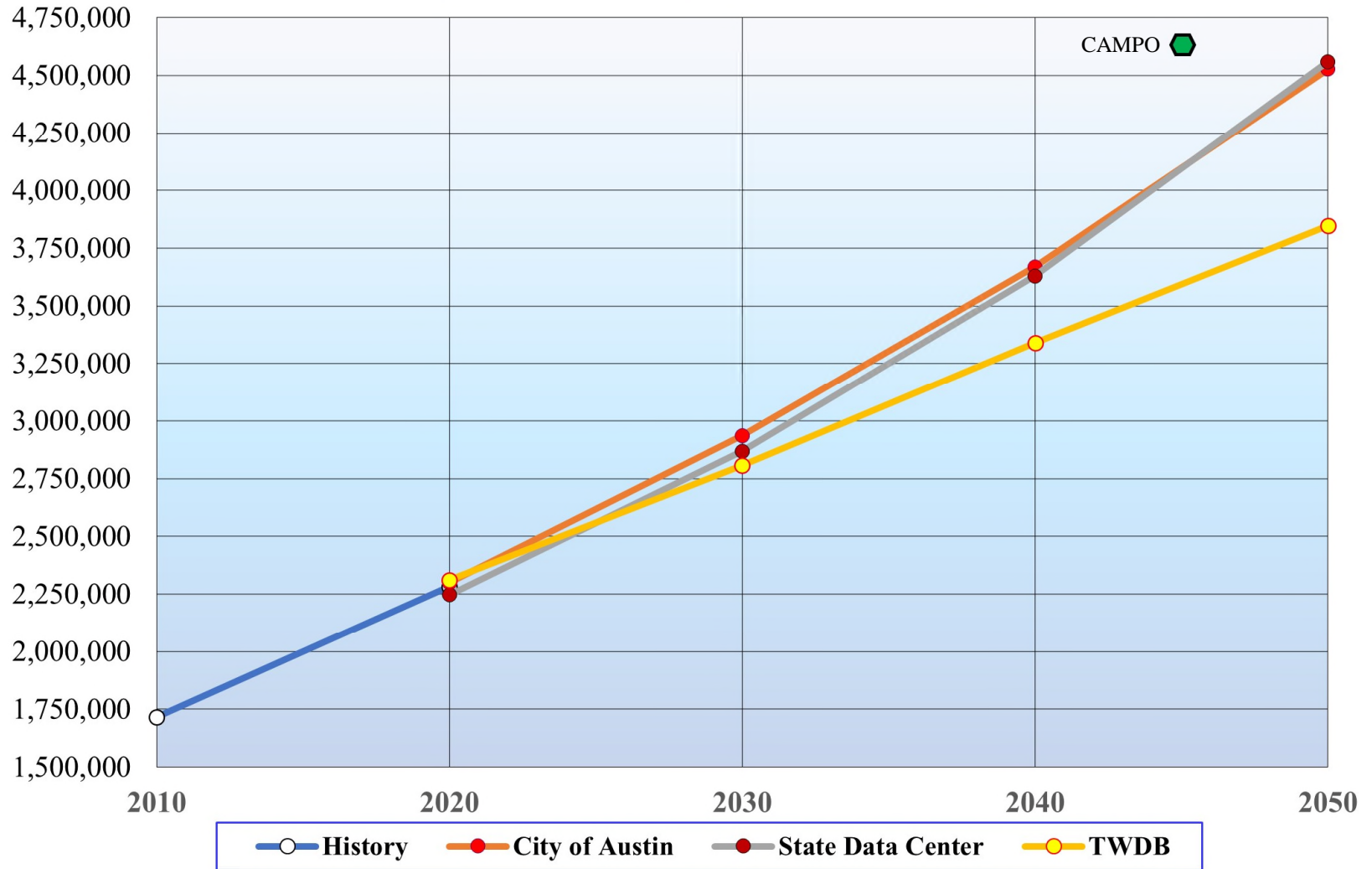
Families by Income Bracket, City of Austin: 2000, 2010 and 2018



## Austin Metropolitan Area Population History and Forecasts

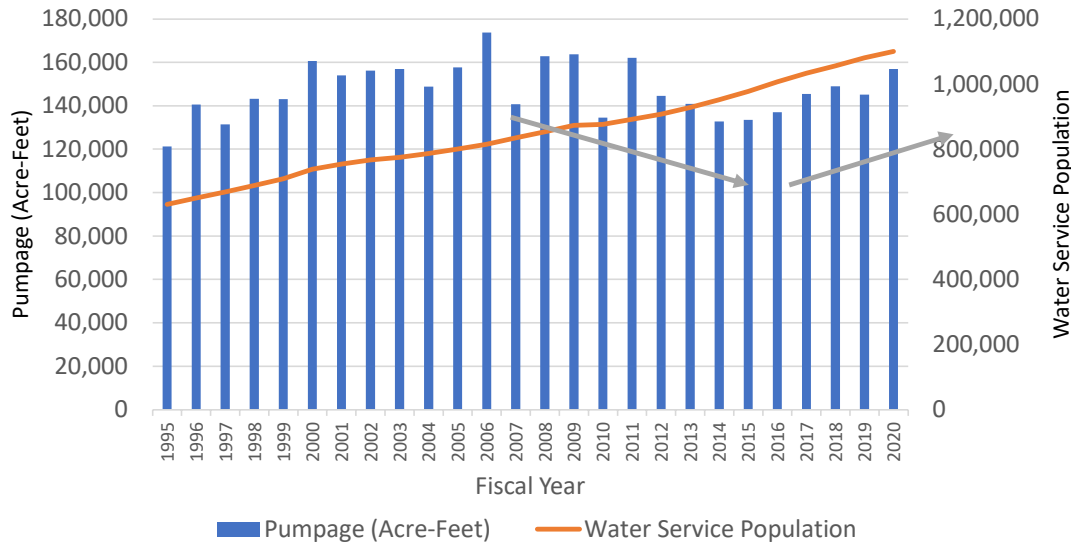


## Austin Metropolitan Area Population History and Forecasts

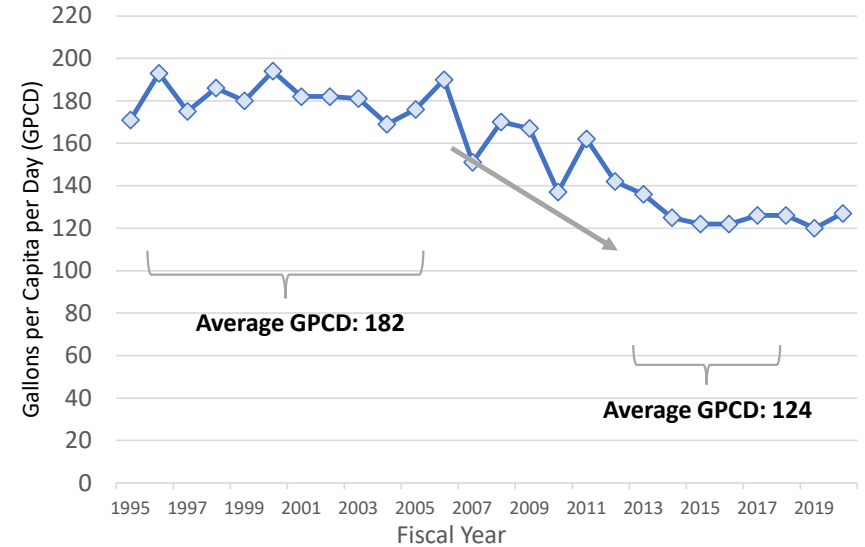


# Austin Water Consumption

Austin Water Service Consumption and Population Growth



Austin Water Service Consumption Per Capita



Planning Horizon Year	Served Population	Potable and Non-Potable Pumpage in Acre-Feet per Year	Potable and Non-Potable (GPCD)	Potable Pumpage in Acre-Feet per Year	Potable (GPCD)
2020	1,101,600	145,000	117	144,000	117
2040	1,577,800	182,000	103	160,000	91
2070	2,314,800	262,000	101	204,000	79
2115	3,977,400	415,000	93	288,000	65

Improvements in water efficiency have driven total consumption below its 2006 peak – a trend that has been reversing since 2014.

Austin Water expects future water efficiency gains to offset increasing consumption from population growth.

Data sources: data.austintexas.gov (City of Austin open data portal) and Austin Water “Water Forward Integrated Water Resource Plan”





