

Basin Conditions Update

Water Operations Committee Meeting

Oct. 22, 2024



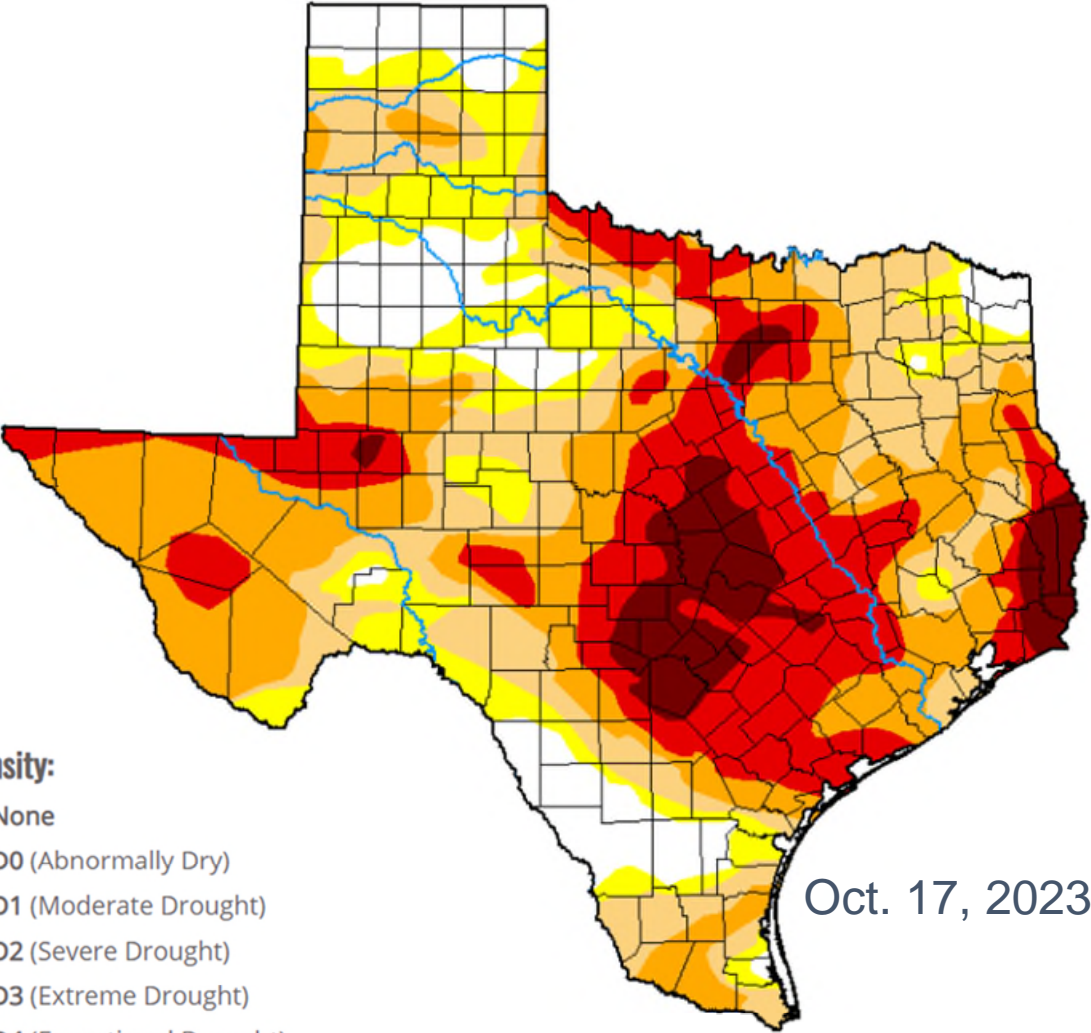
U.S. Drought Monitor Texas

The Drought Monitor focuses on broad-scale conditions. Local conditions may vary. For more information on the Drought Monitor, go to <https://droughtmonitor.unl.edu/About.aspx>

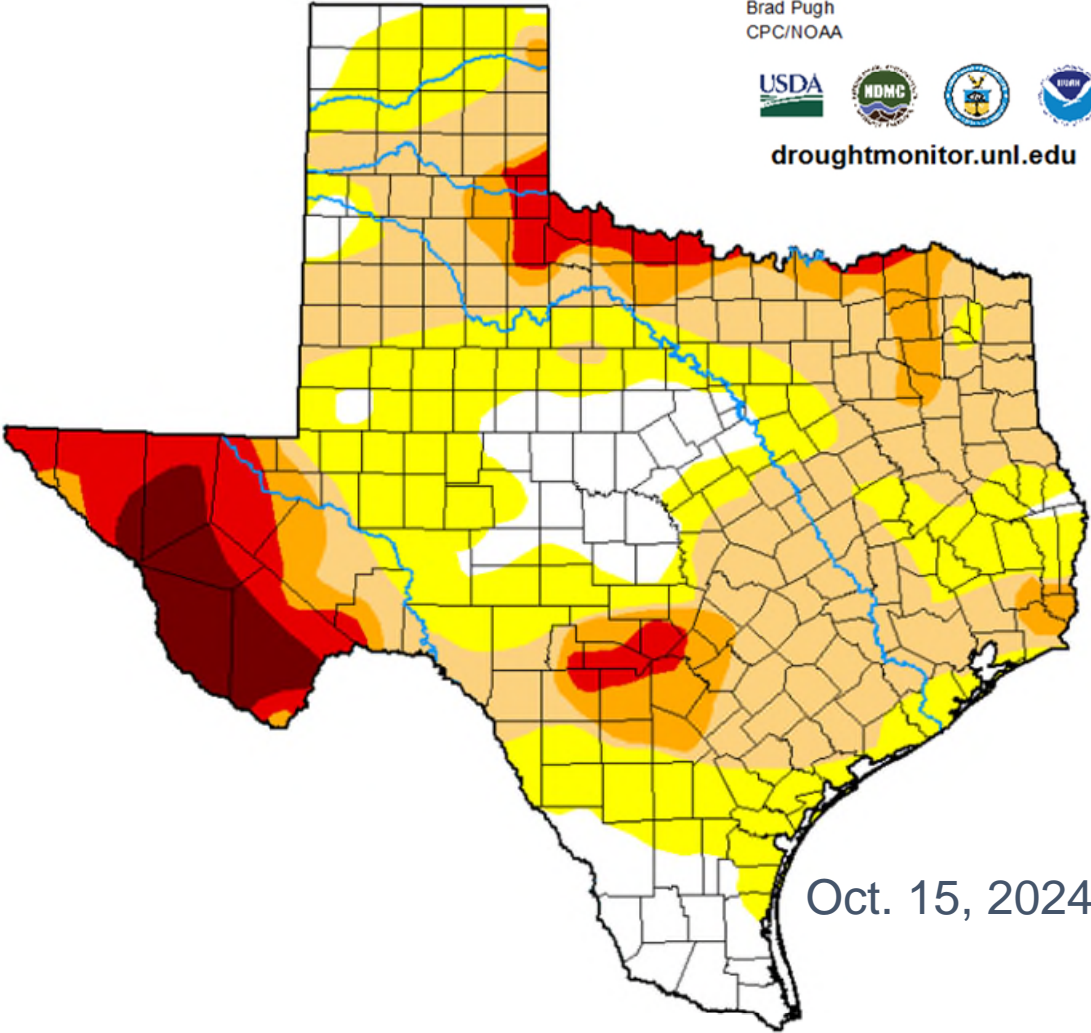
Author:
Brad Pugh
CPC/NOAA



droughtmonitor.unl.edu



Oct. 17, 2023



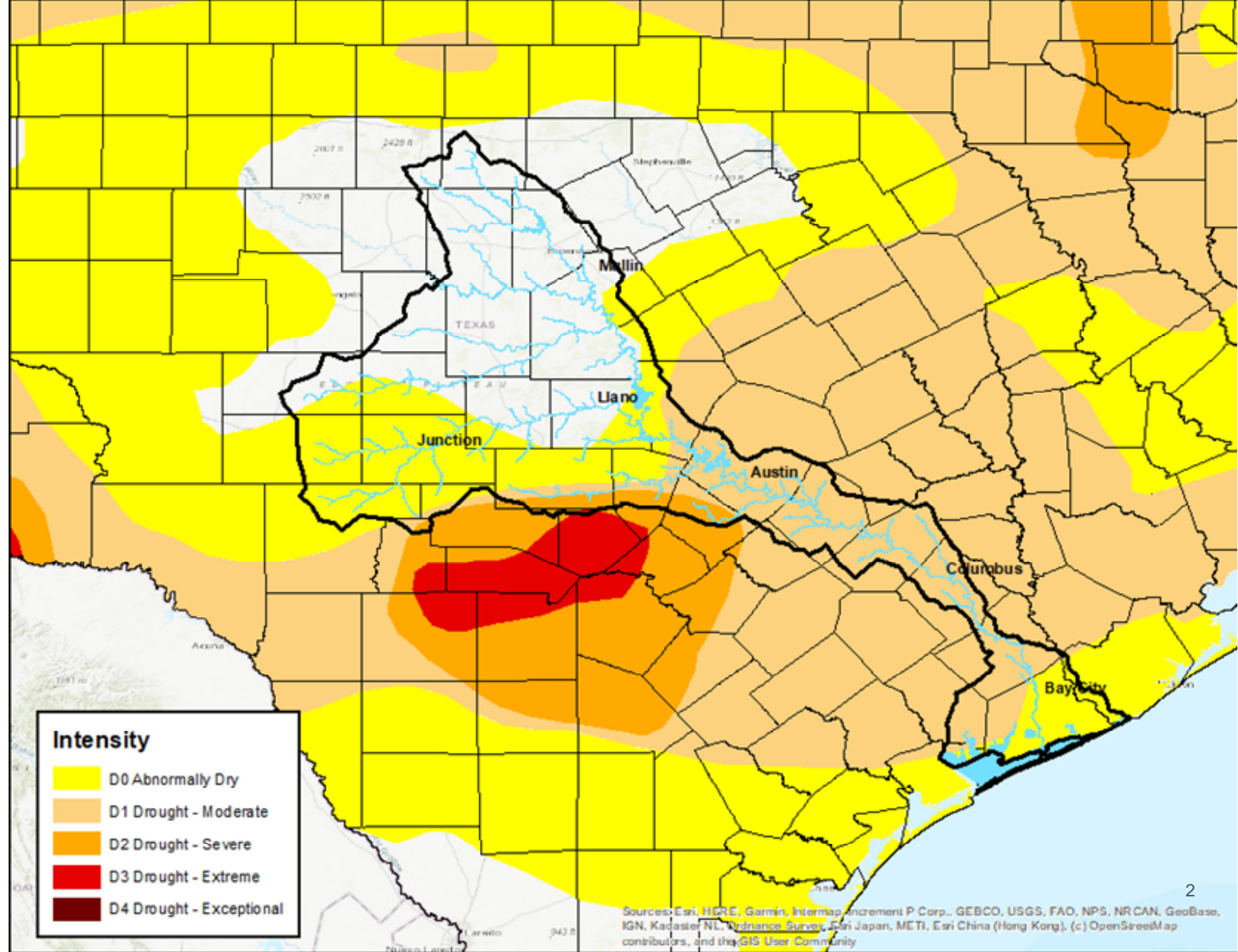
Oct. 15, 2024

- Intensity:**
- None
 - D0 (Abnormally Dry)
 - D1 (Moderate Drought)
 - D2 (Severe Drought)
 - D3 (Extreme Drought)
 - D4 (Exceptional Drought)
 - No Data

U.S. Drought Monitor

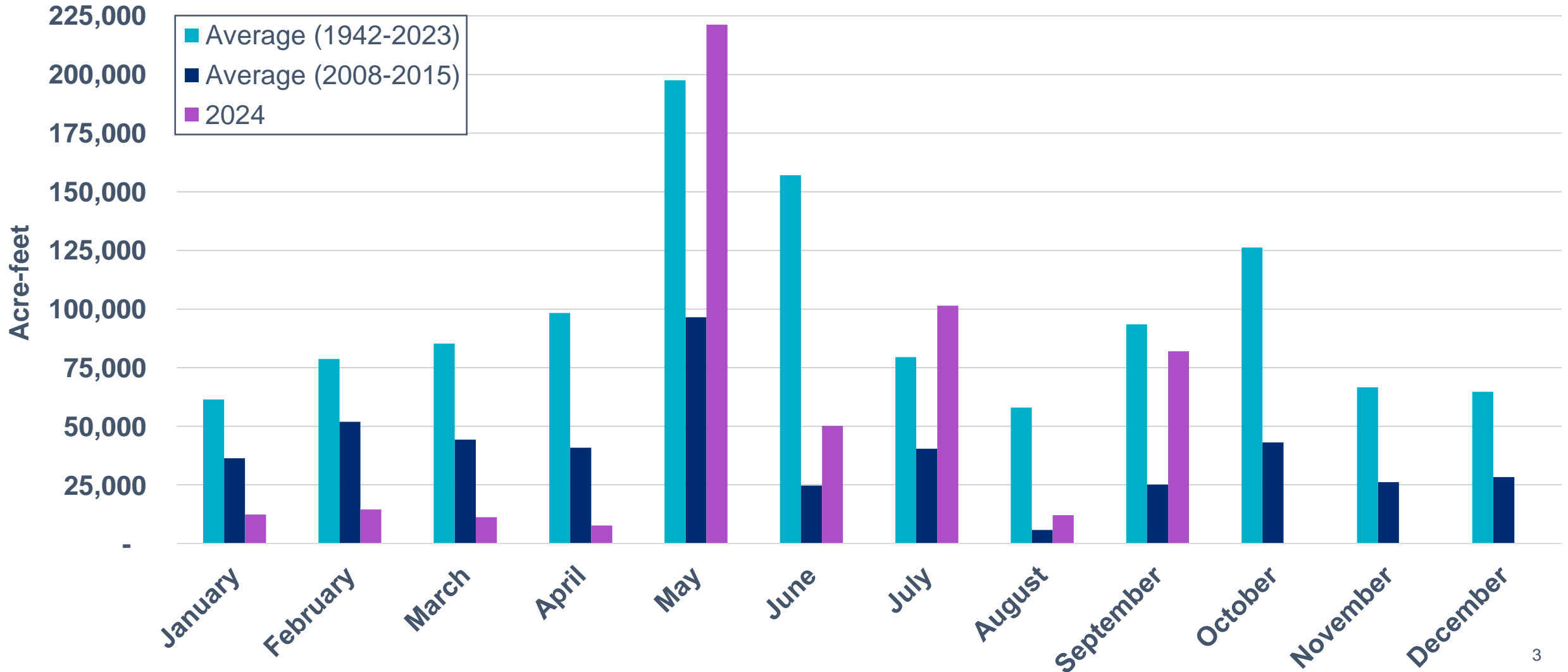
Lower Colorado River Basin

As of Oct. 15, 2024

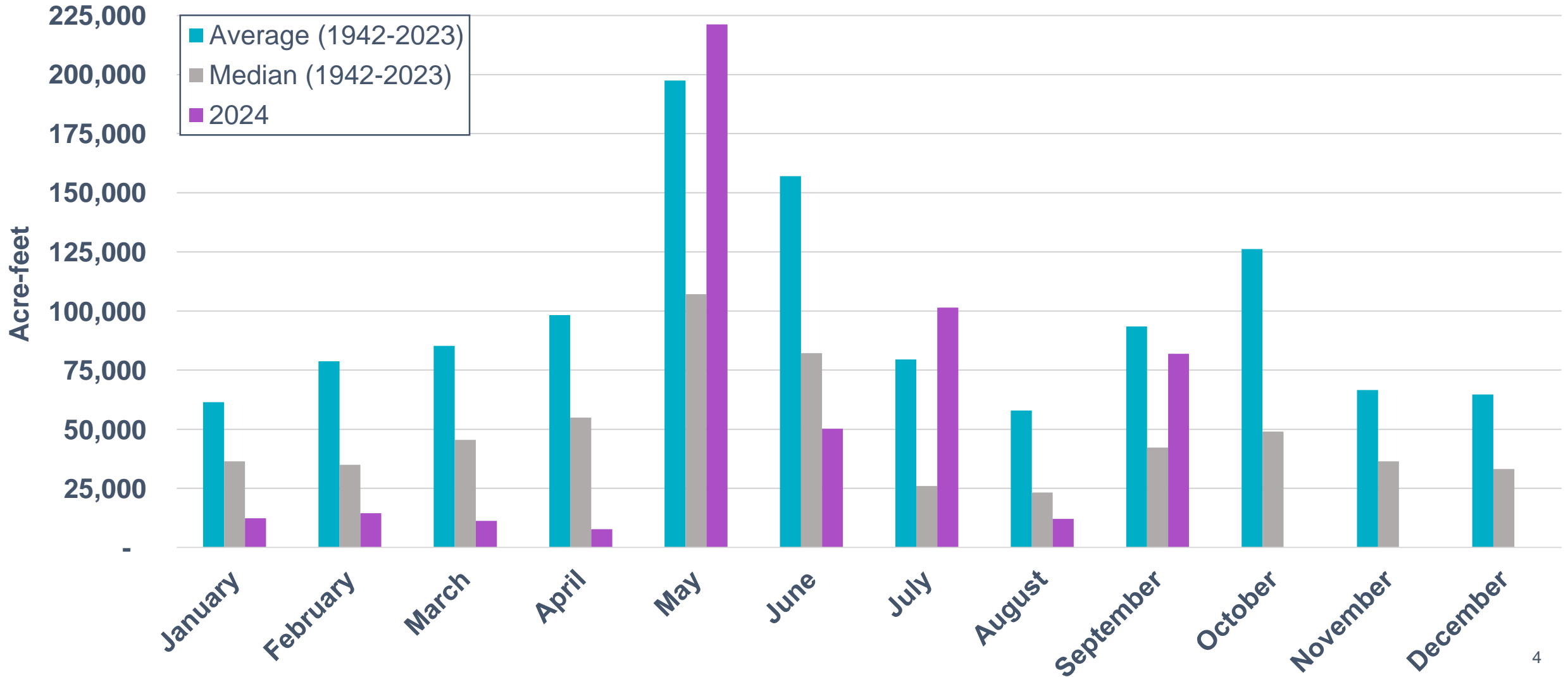


Sources: Esri, HERE, Garmin, Intermap, increment P Corp., GEBCO, USGS, FAO, NPS, NRCAN, GeoBase, IGN, Kadaster NL, Ordnance Survey, Esri Japan, METI, Esri China (Hong Kong), (c) OpenStreetMap contributors, and the GIS User Community

Water Flowing Into Lakes Buchanan and Travis

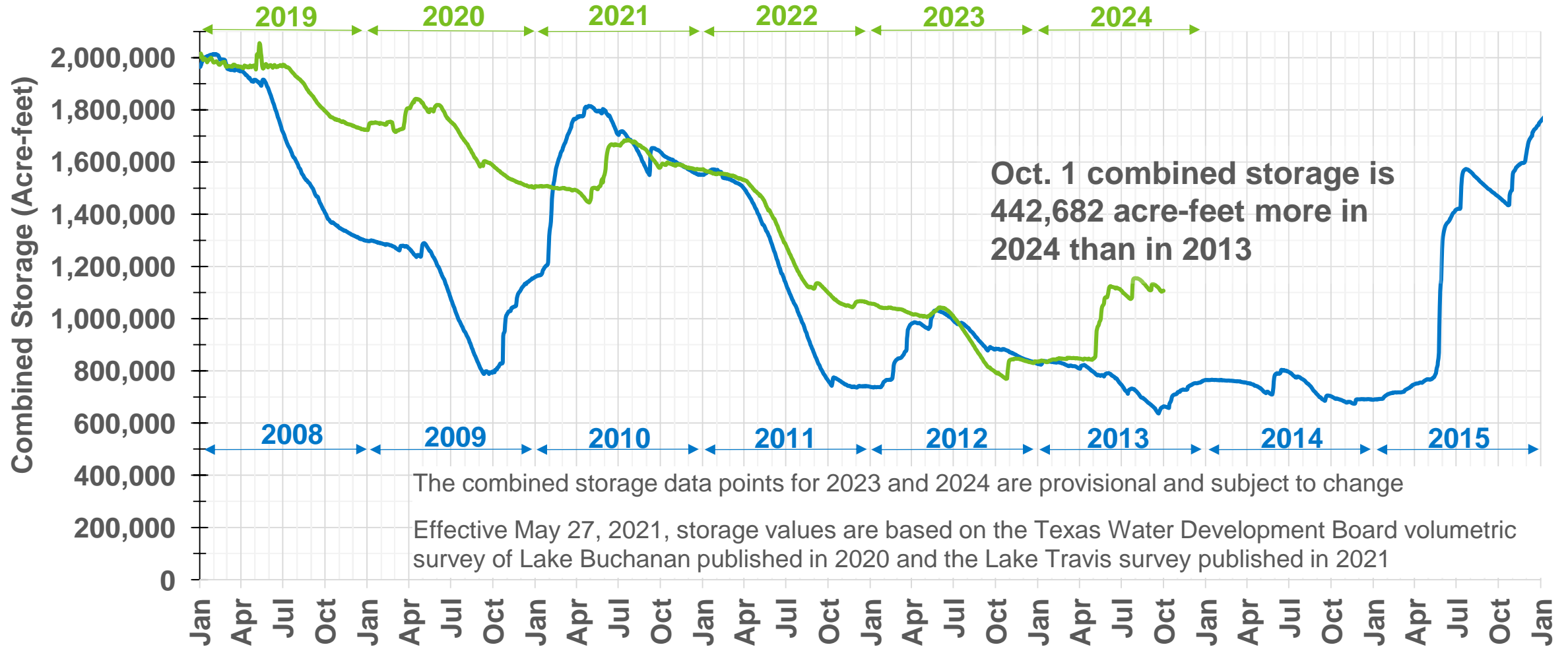


Water Flowing Into Lakes Buchanan and Travis – Median

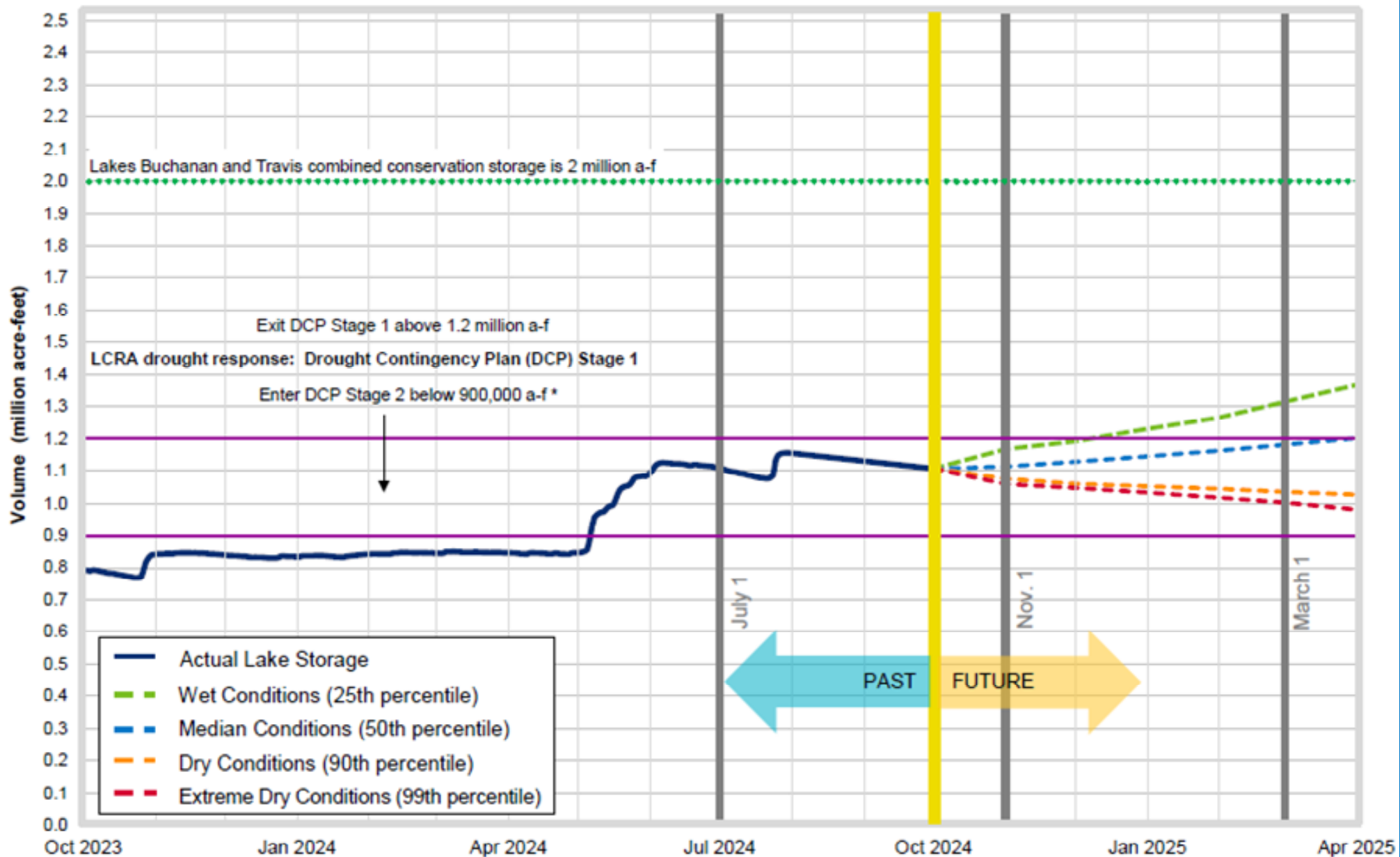


Combined Storage of Lakes Buchanan and Travis

Comparison of 2019-2024 and 2008-2015



Lakes Buchanan and Travis Total Combined Storage Projections

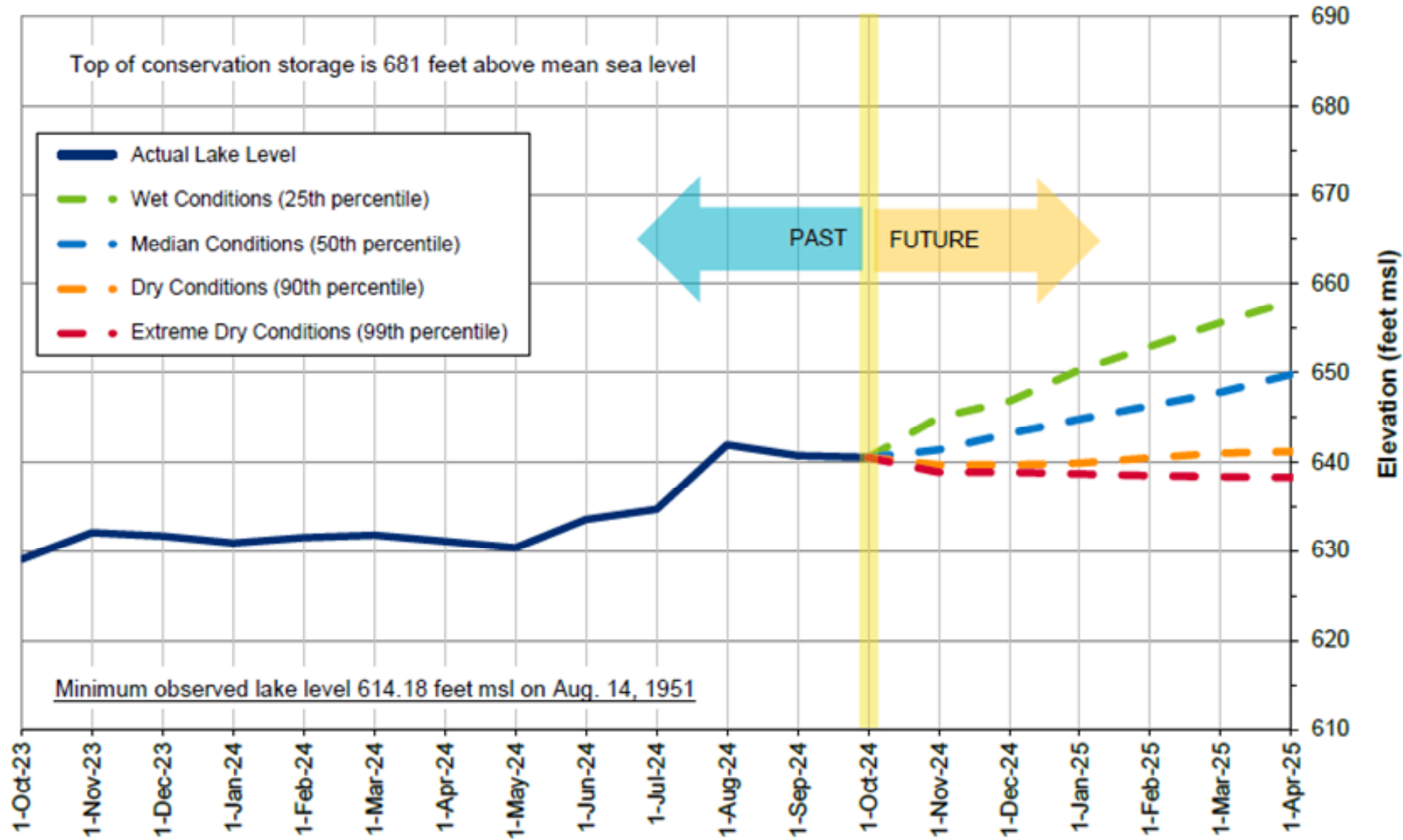


* LCRA also would enter DCP Stage 2 on March 1 or July 1 if combined storage is below 1.1 million a-f and the prior three-month inflows total is less than the 25th percentile of historic inflows for that three-month period

Date: Oct. 1, 2024

Note: One acre-foot equals 325,851 gallons

Lake Travis Level Projection*

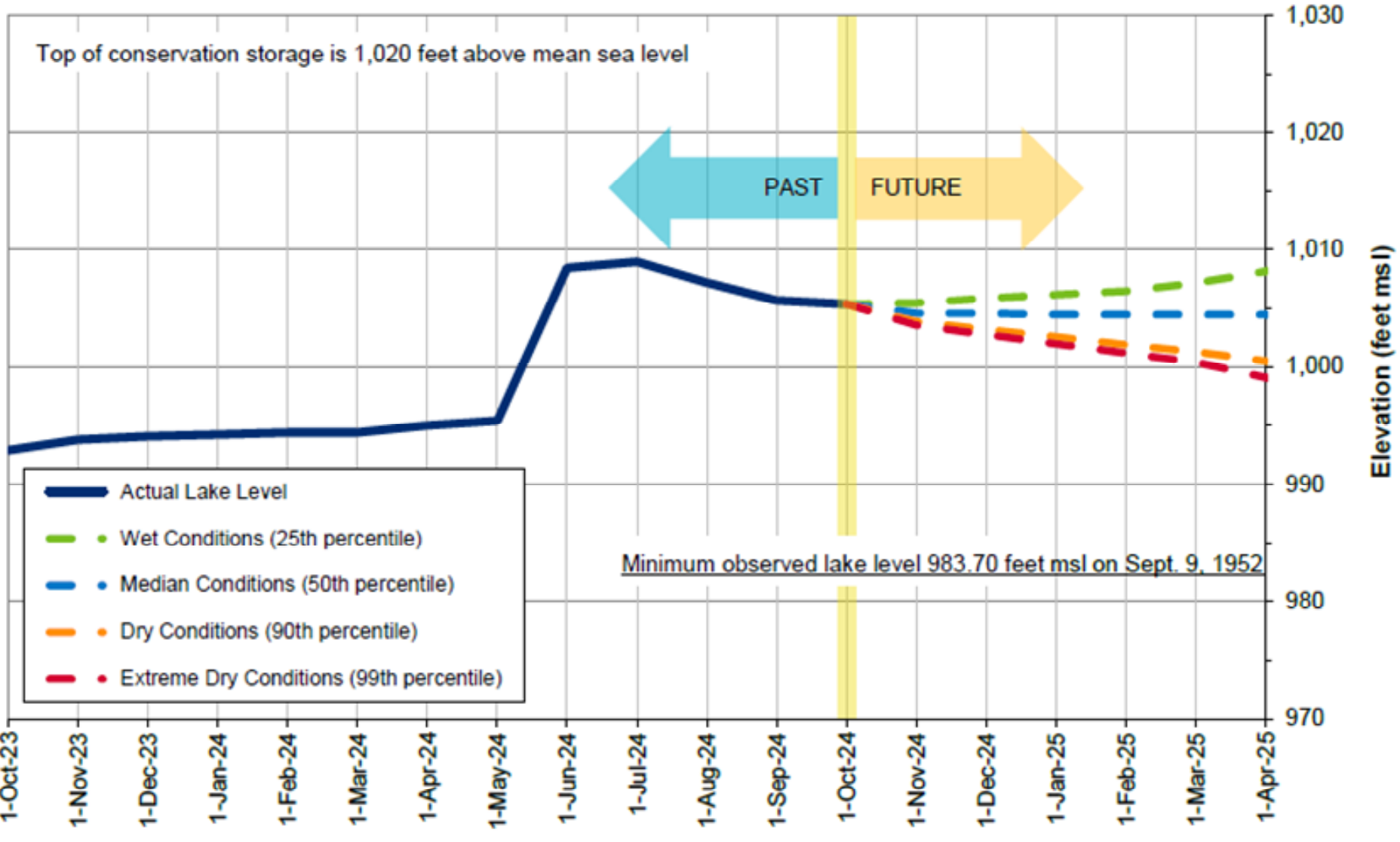


**Average for October:
663.92 feet msl**

**Historic low (1951):
614.18 feet msl**

*Based on results from the draft stochastic model under development to reflect provisions of the 2020 Water Management Plan

Lake Buchanan Level Projection*



**Average for October:
1,010.20 feet msl**

**Historic low (1952):
983.70 feet msl**

*Based on results from the draft stochastic model under development to reflect provisions of the 2020 Water Management Plan

Lake Level Comparisons

	Oct. 1, 2023	Oct. 1, 2024
Lake Travis (feet msl)	628.66	640.54
Lake Buchanan (feet msl)	992.76	1,005.37
Combined storage* (a-f)	793,747	1,106,436

*For purposes of the 2020 Water Management Plan, the combined storage is defined as the total of the daily average volume of water in lakes Buchanan and Travis. This determination excludes any water in Lake Buchanan above elevation 1,018 feet msl in the months of May through October or above 1,020 feet msl in the months of November through April and any water in Lake Travis above elevation 681 feet msl.



LCRA

ENERGY • WATER • COMMUNITY SERVICES