

Basin Conditions Update

Water Operations Committee Meeting

Oct. 19, 2021



U.S. Drought Monitor

Texas

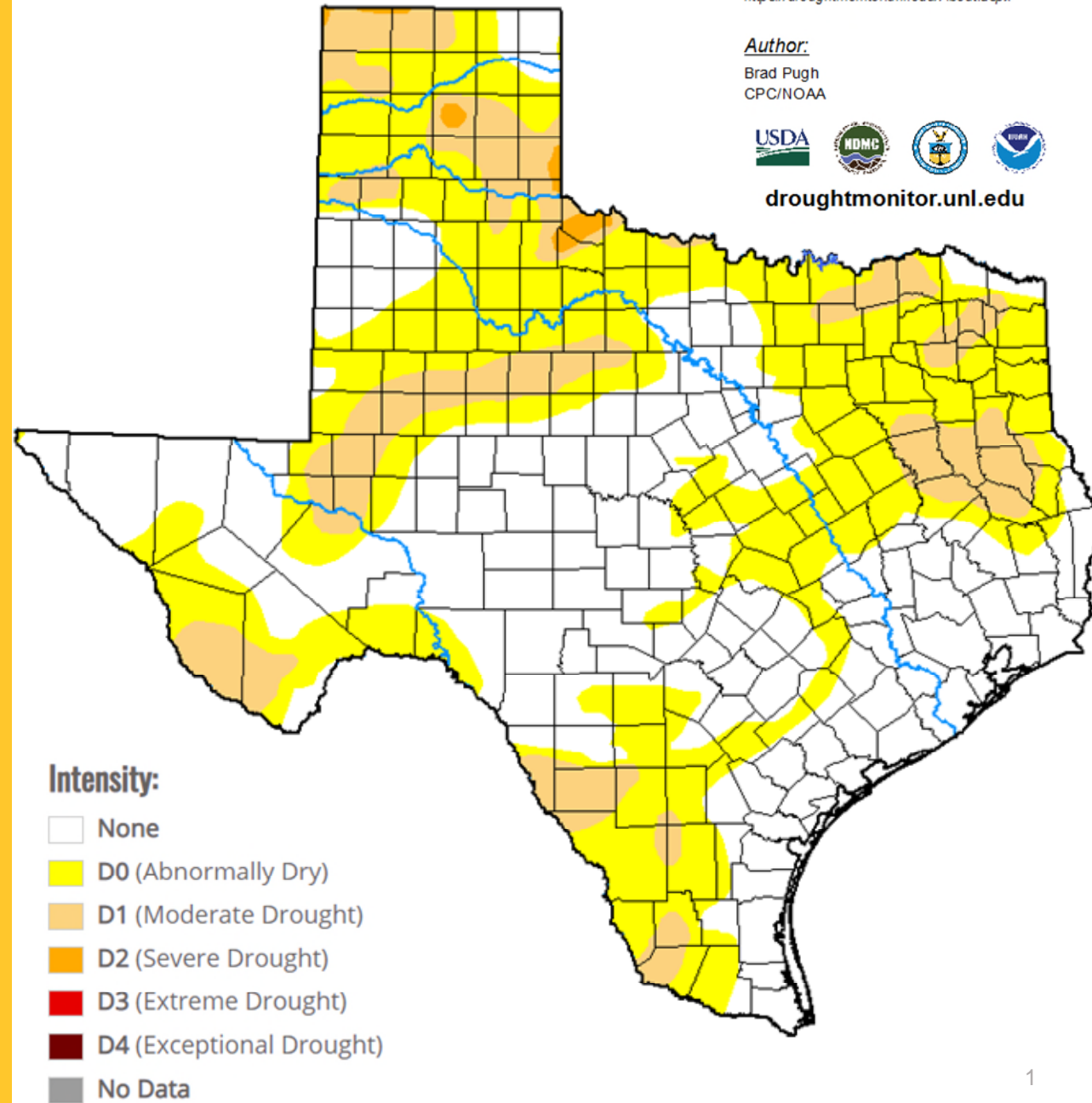
As of Oct. 12, 2021

The Drought Monitor focuses on broad-scale conditions. Local conditions may vary. For more information on the Drought Monitor, go to <http://droughtmonitor.unl.edu/About.aspx>

Author:
Brad Pugh
CPC/NOAA



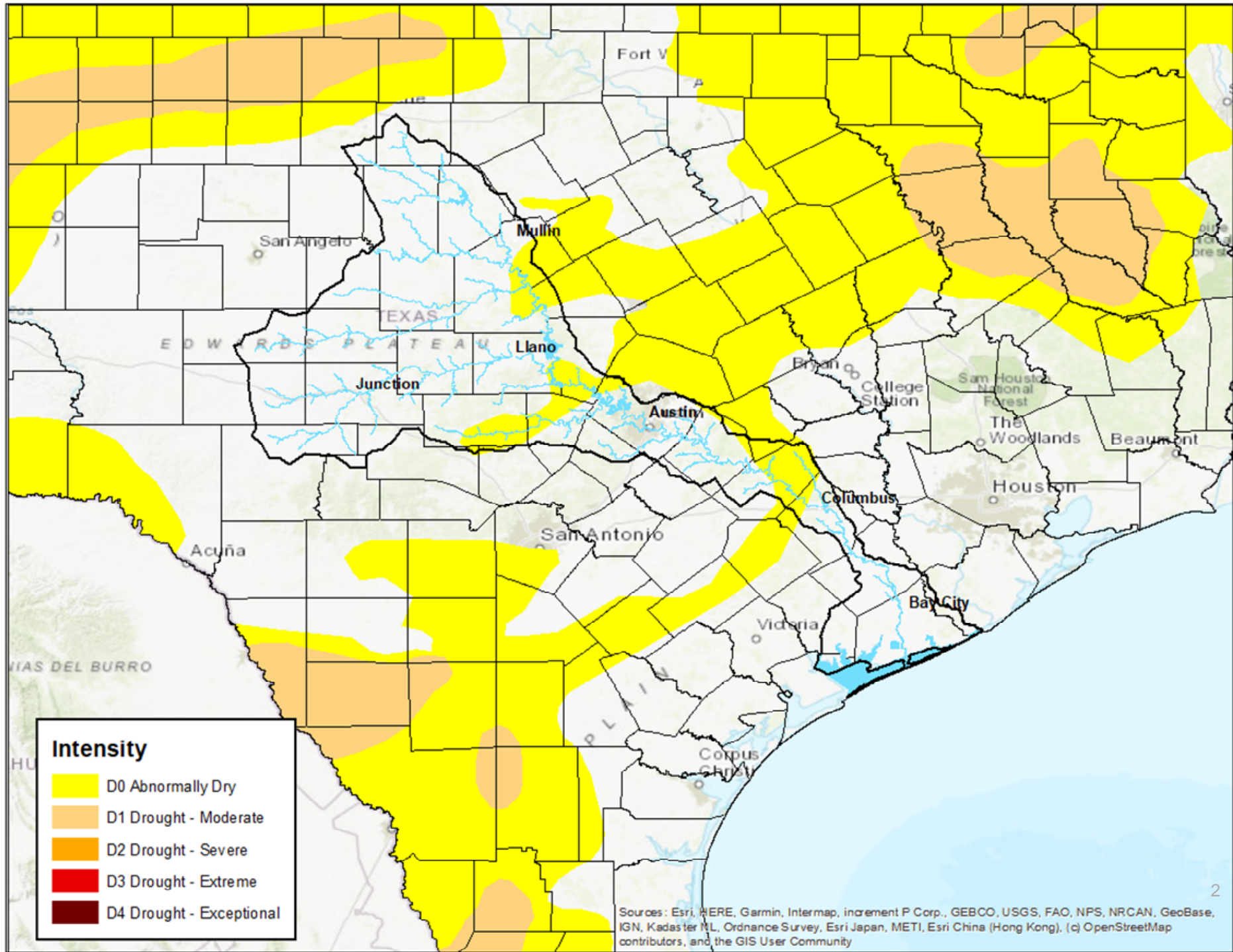
droughtmonitor.unl.edu



U.S. Drought Monitor

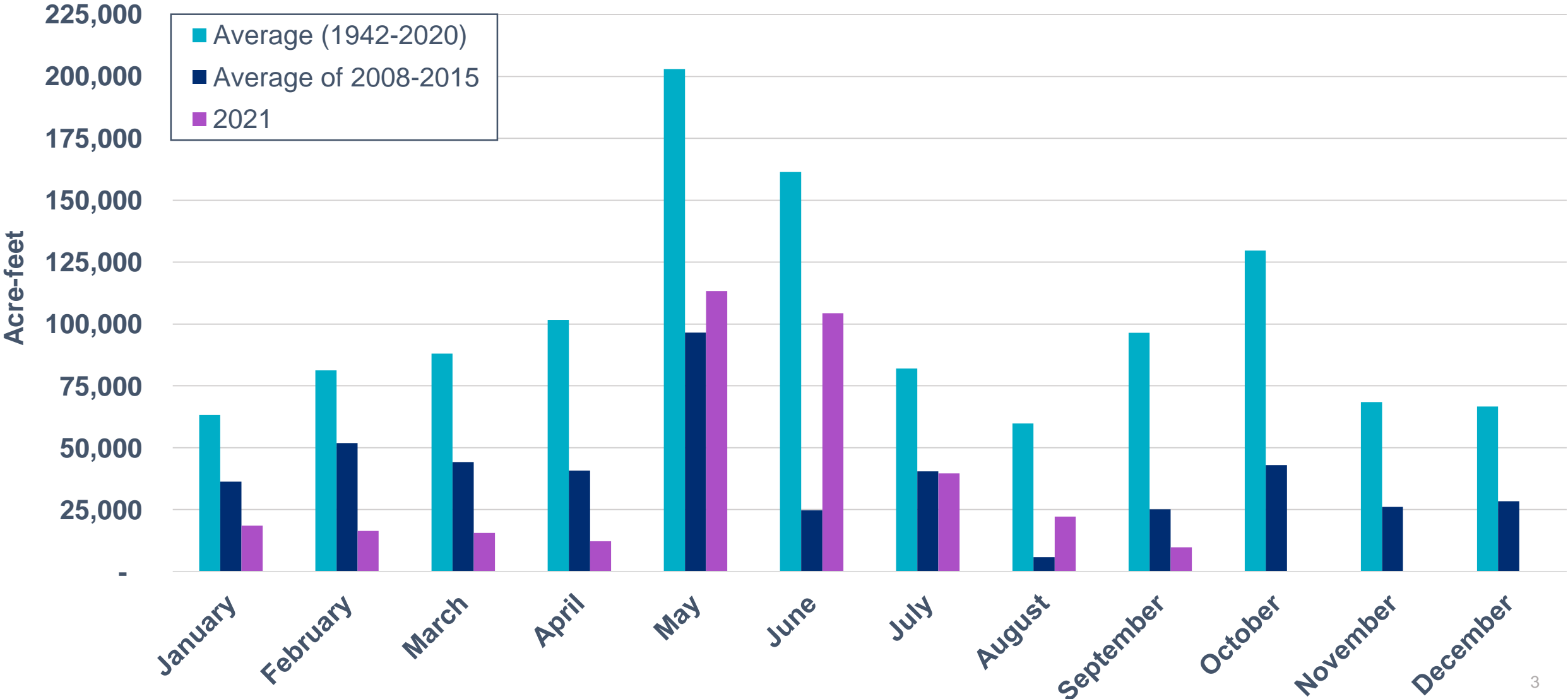
Lower Colorado River Basin

As of Oct. 12, 2021

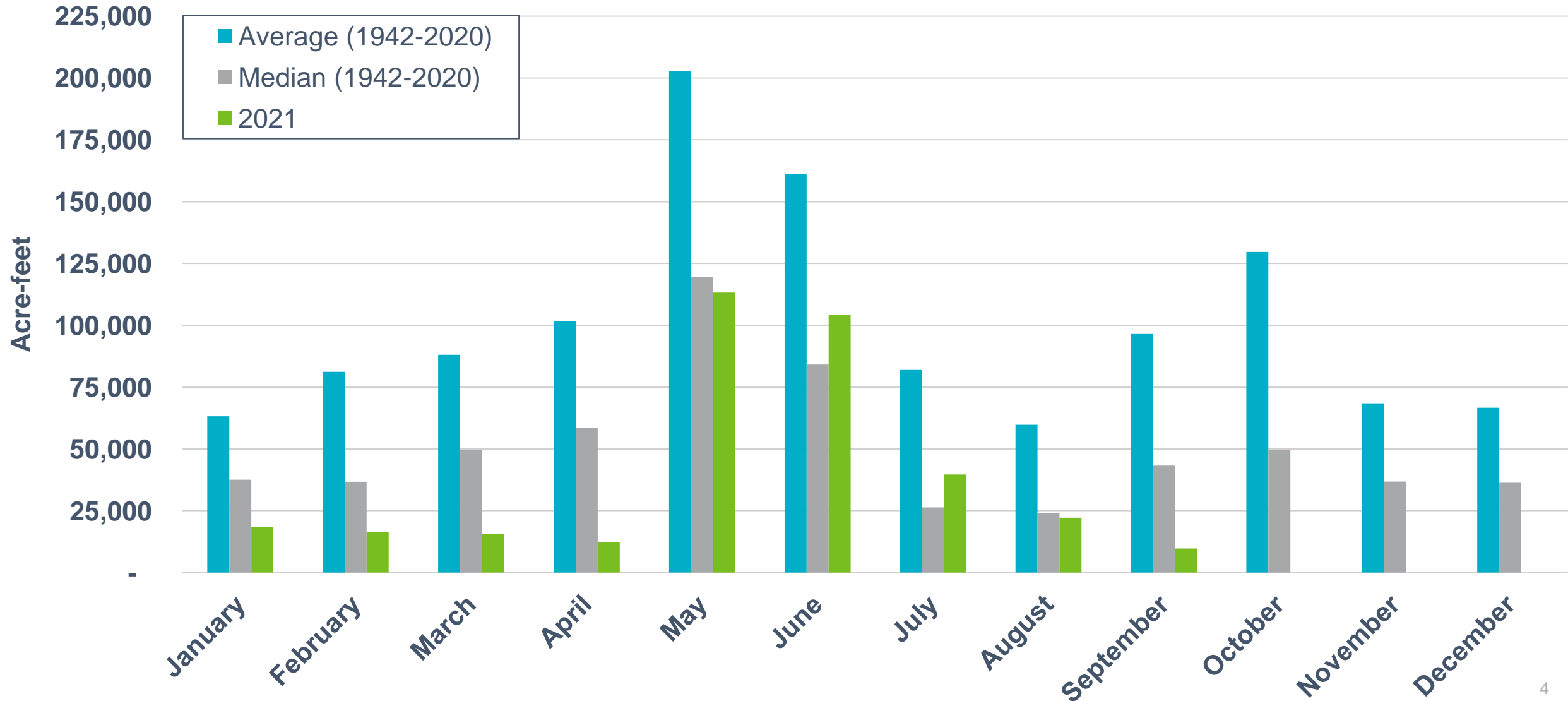


Sources: Esri, HERE, Garmin, Intermap, increment P Corp., GEBCO, USGS, FAO, NPS, NRCAN, GeoBase, IGN, Kadaster NL, Ordnance Survey, Esri Japan, METI, Esri China (Hong Kong), (c) OpenStreetMap contributors, and the GIS User Community

Water Flowing Into Lakes Buchanan and Travis



Water Flowing Into Lakes Buchanan and Travis – Median

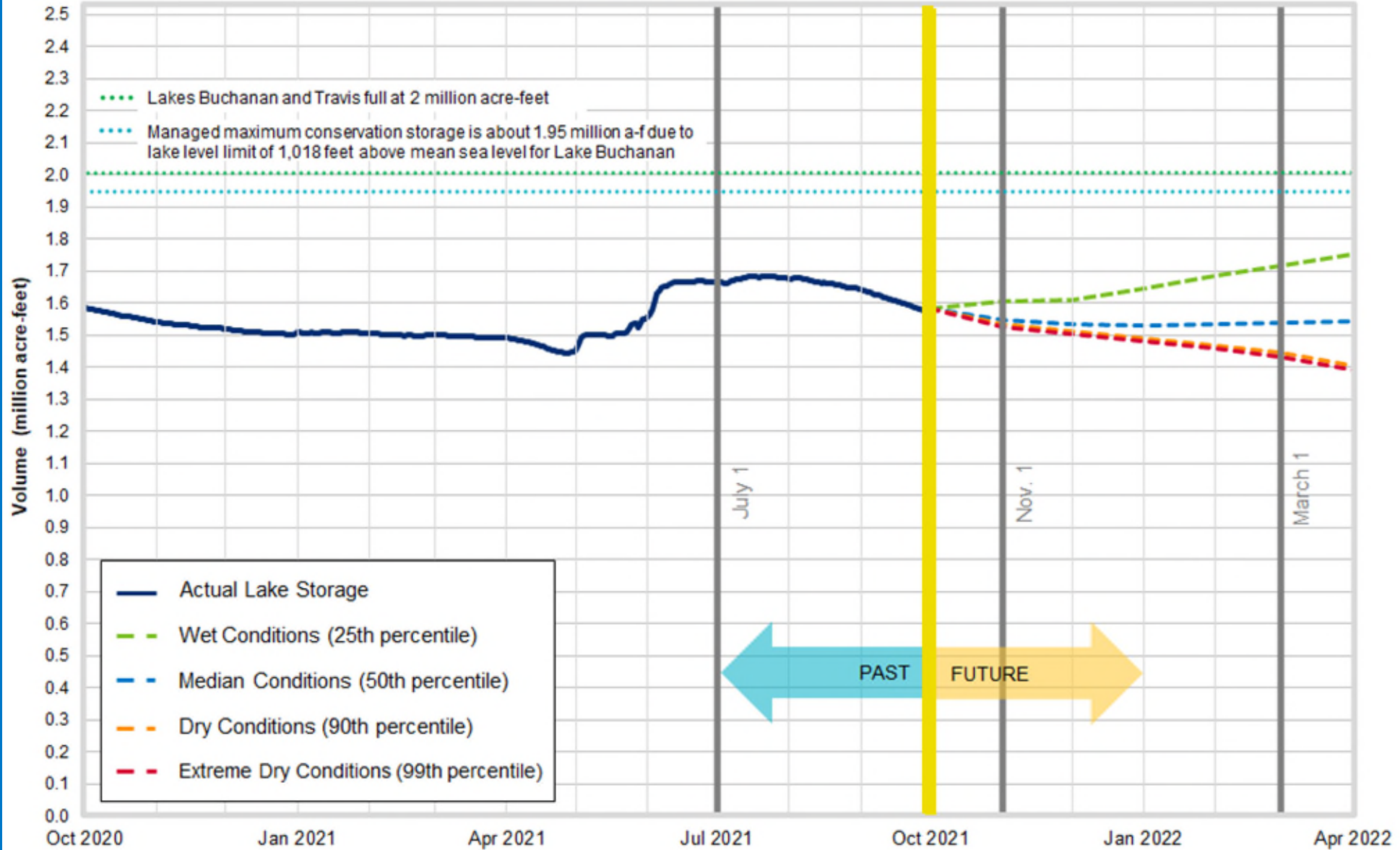


Agricultural Operations Update

Second Season Summary Calendar Year 2021 (as of Oct. 8, 2021)

	Rice	Turf	Row Crop	Pasture	Wildlife
Gulf Coast Agricultural Division					
Contracts	11	6	0	0	9
Acres contracted	4,358.56	1,715.11	0	0	2,229.30
Water delivered (a-f)	3,998.80	160.25			918.39
Lakeside Agricultural Division					
Contracts	43	0	0	0	17
Acres contracted	15,666.41	0	0	0	1,299.00
Water delivered (a-f)	15,369.55				1,285.37
Garwood Agricultural Division					
Contracts	47	0	0	0	31
Acres contracted	17,308.14	0	0	0	4,090.25
Water delivered (a-f)	18,535.41				2,847.94

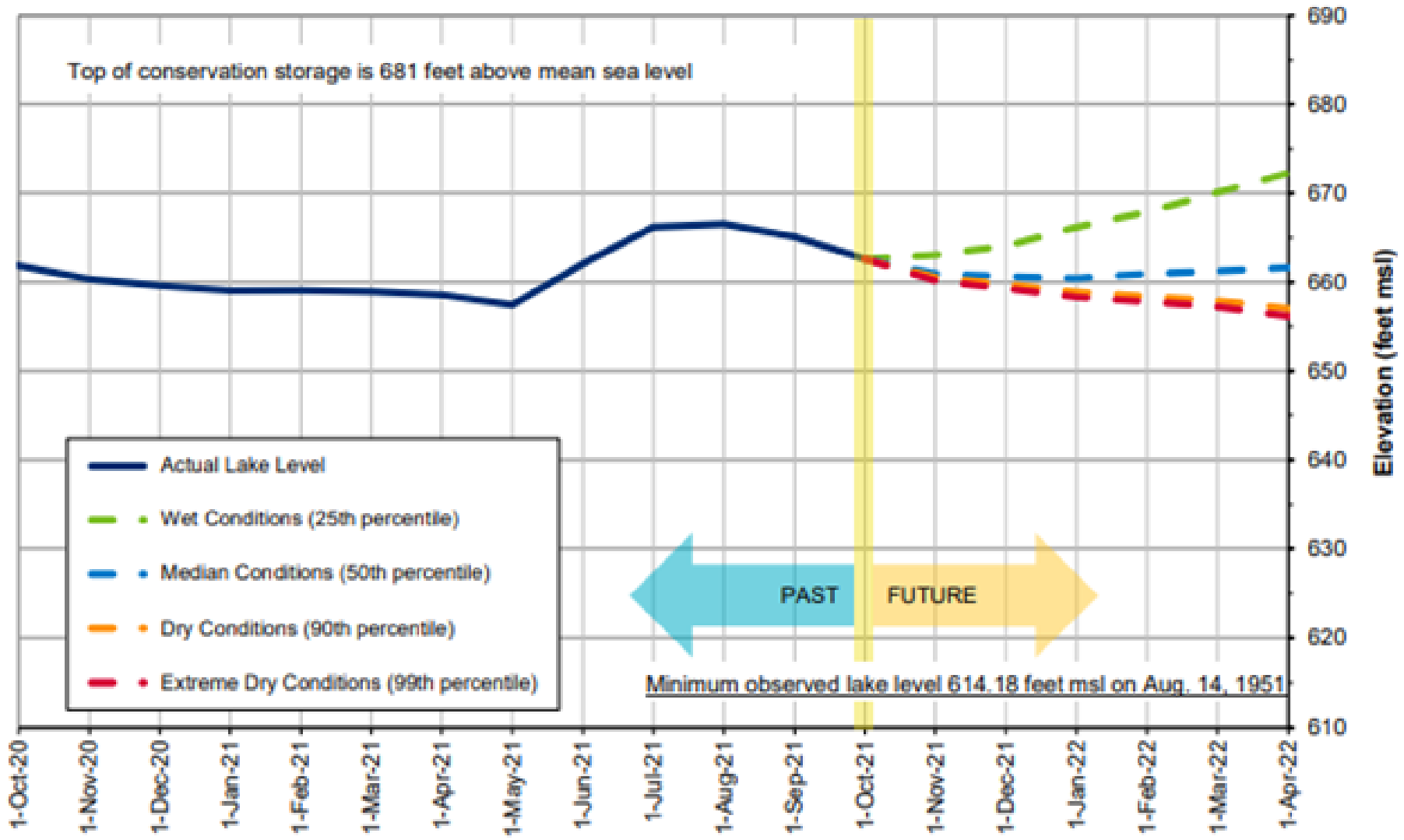
Lakes Buchanan and Travis Total Combined Storage Projections



Date: Oct. 1, 2021

Note: One acre-foot equals 325,851 gallons

Lake Travis Level Projection*

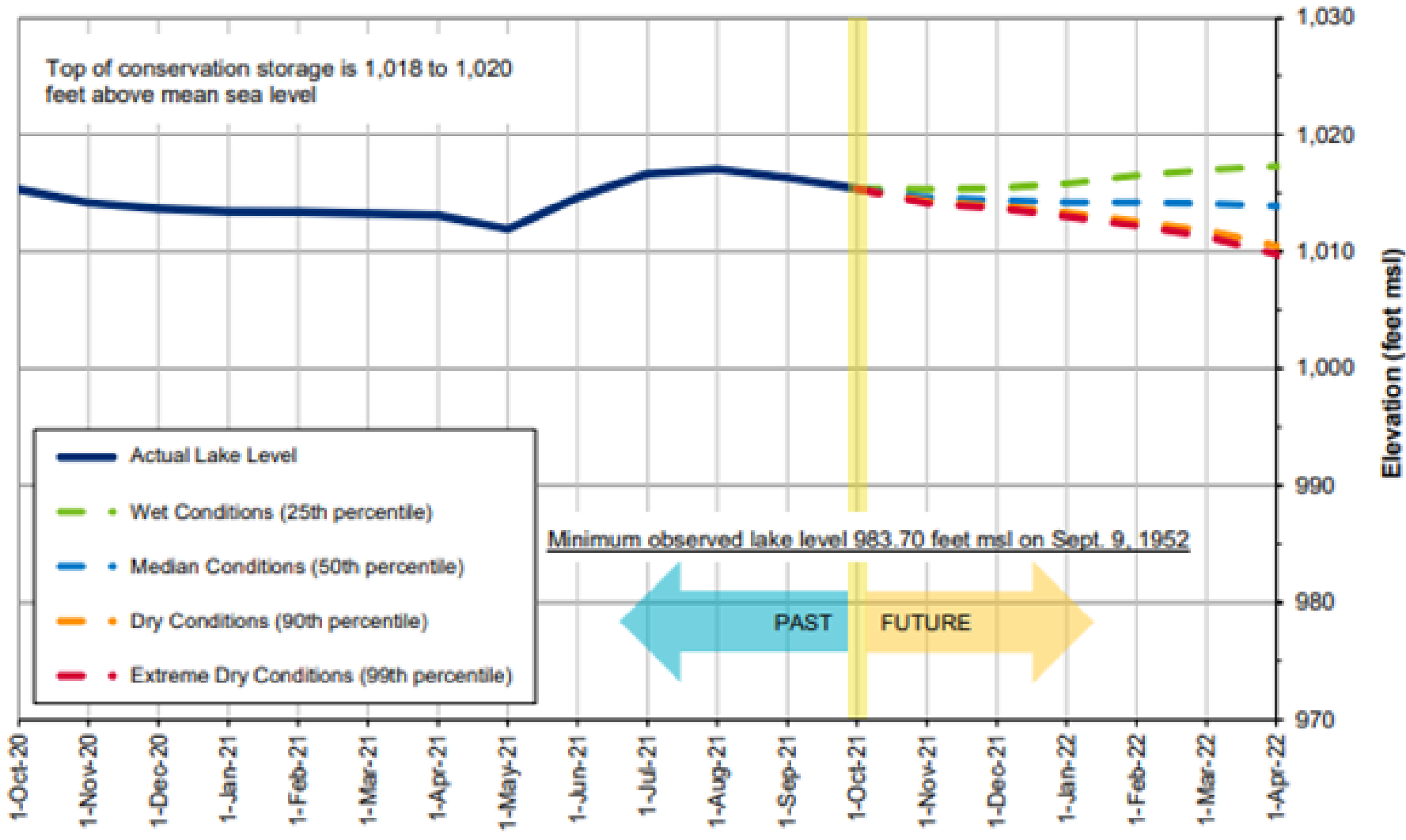


**Average for October:
664.66 feet msl**

**Historic low (1951):
614.18 feet msl**

*Based on results from the draft stochastic model under development to reflect provisions of the 2020 Water Management Plan

Lake Buchanan Level Projection*



**Average for October:
1,010.45 feet msl**

**Historic low (1952):
983.70 feet msl**

*Based on results from the draft stochastic model under development to reflect provisions of the 2020 Water Management Plan

Lake Level Comparisons

	Oct. 1, 2020	Oct. 1, 2021**
Lake Travis (feet msl)	661.89	662.58
Lake Buchanan (feet msl)	1,015.29	1,015.23
Combined storage* (a-f)	1,585,132	1,583,743

*For purposes of the 2020 Water Management Plan, the combined storage is defined as the total of the daily average volume of water in lakes Buchanan and Travis. This determination excludes any water in Lake Buchanan above elevation 1,018 feet msl in the months of May through October or above 1,020 feet msl in the months of November through April and any water in Lake Travis above elevation 681 feet msl.

** Effective May 27, 2021, storage volumes for lakes Buchanan and Travis are based on the Texas Water Development Board volumetric surveys published in 2020 (Buchanan) and 2021 (Travis).

