

Basin Conditions Update

Water Operations Committee Meeting

Sept. 22, 2021



U.S. Drought Monitor

Texas

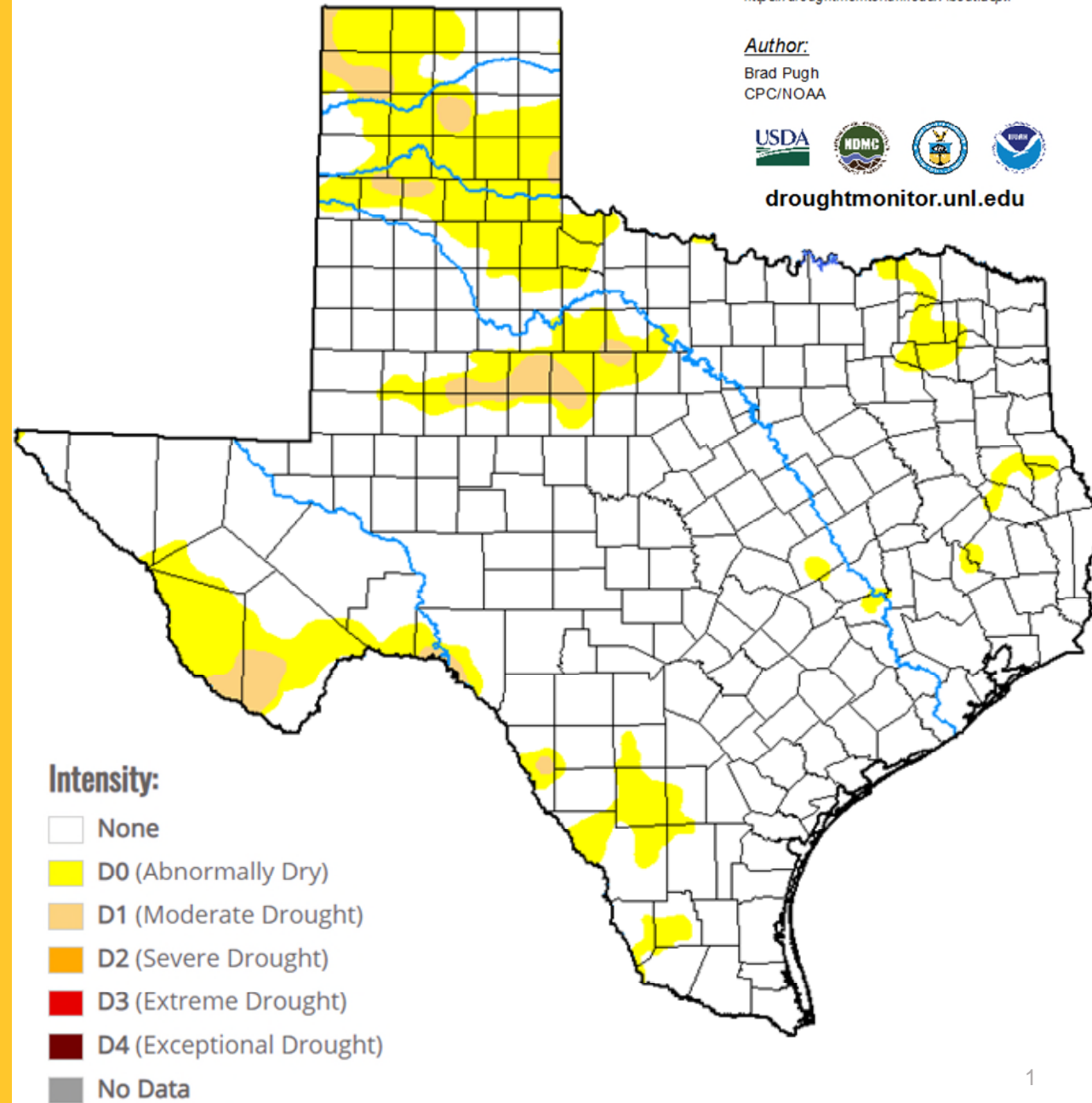
As of Sept. 14, 2021

The Drought Monitor focuses on broad-scale conditions. Local conditions may vary. For more information on the Drought Monitor, go to <http://droughtmonitor.unl.edu/About.aspx>

Author:
Brad Pugh
CPC/NOAA



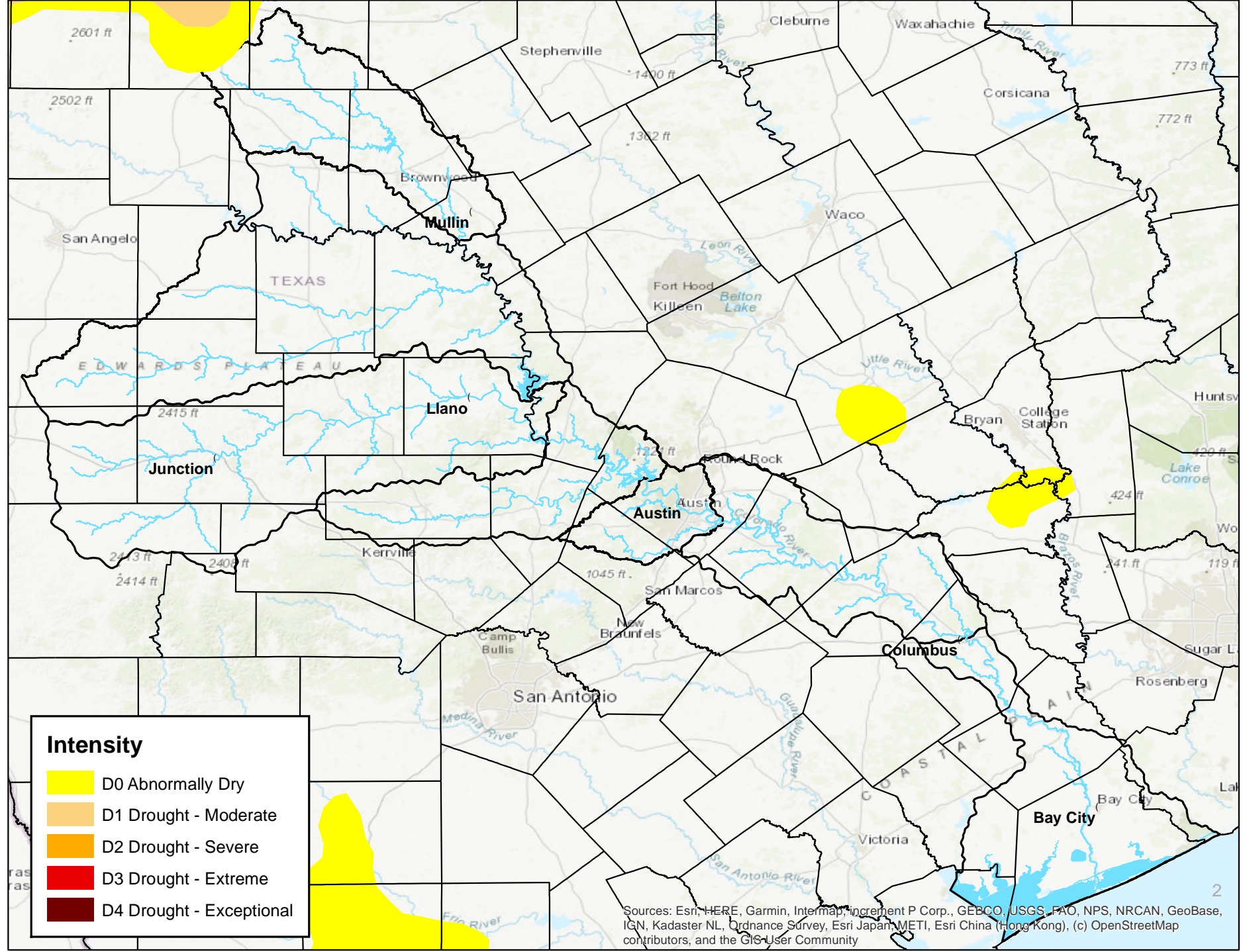
droughtmonitor.unl.edu



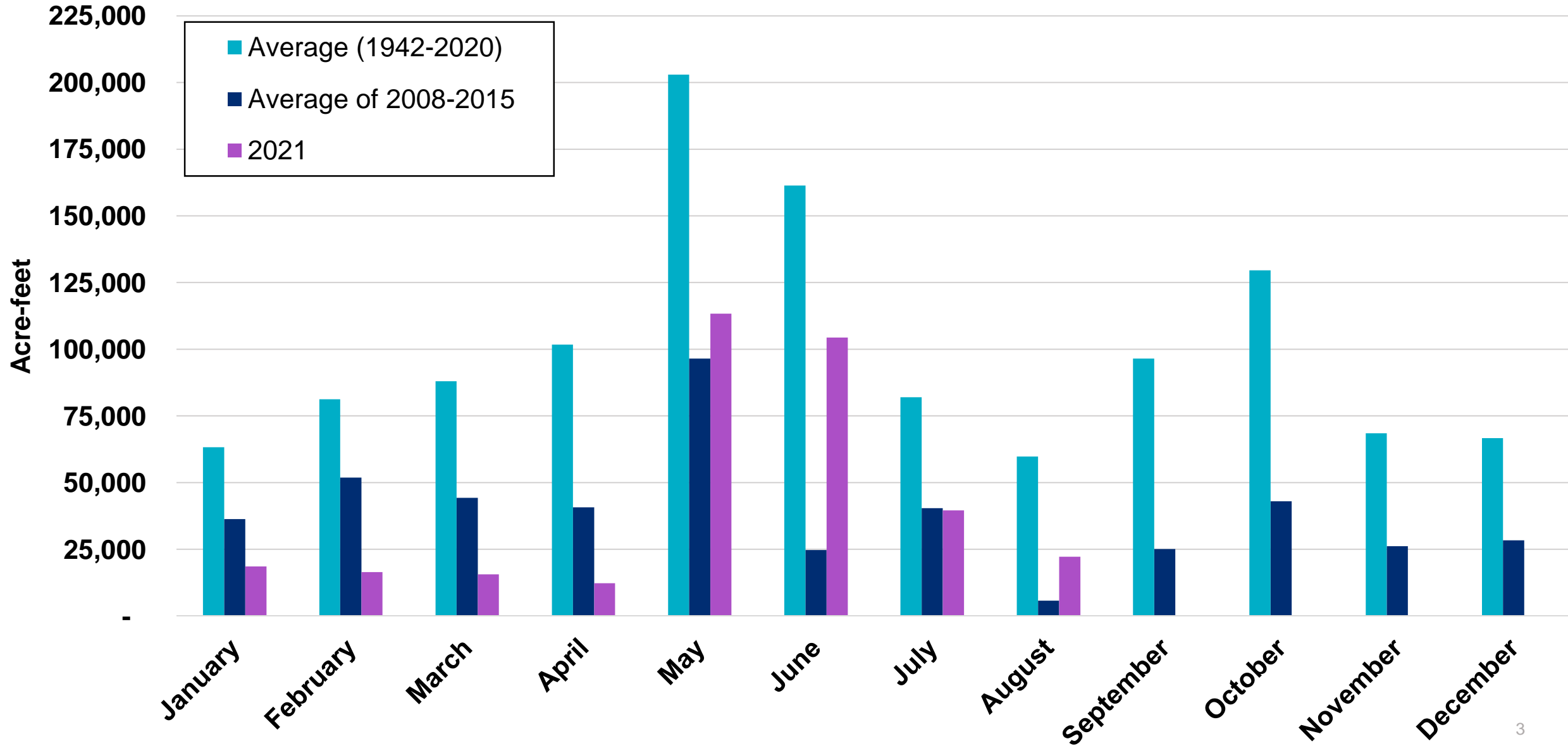
U.S. Drought Monitor

Lower Colorado River Basin

As of Sept. 14, 2021



Water Flowing Into the Highland Lakes



Irrigation Operations Update

Gulf Coast Agricultural Division

Calendar Year 2021 – First Season Summary

	Rice	Turf	Row Crop	Pasture
Contracts	24	6	0	1
Contracts not serviced	0	0	0	1
Acreage contracted	8,952.0	1,715.1	0	50.0
Acres serviced	8,952.0	1,715.1	0	0
Water delivered (a-f)	15,983.7	535.3	0	0

Irrigation Operations Update

Lakeside Agricultural Division

CY 2021 – First Season Summary

	Rice	Turf	Row Crop	Pasture
Contracts	59	0	0	1
Contracts not serviced	4	0	0	1
Acreage contracted	23,960.8	0	0	22.5
Acres serviced	21,594.1	0	0	0
Water delivered (a-f)	19,266.8	0	0	0

Irrigation Operations Update

Garwood Agricultural Division

CY 2021 – First Season Summary

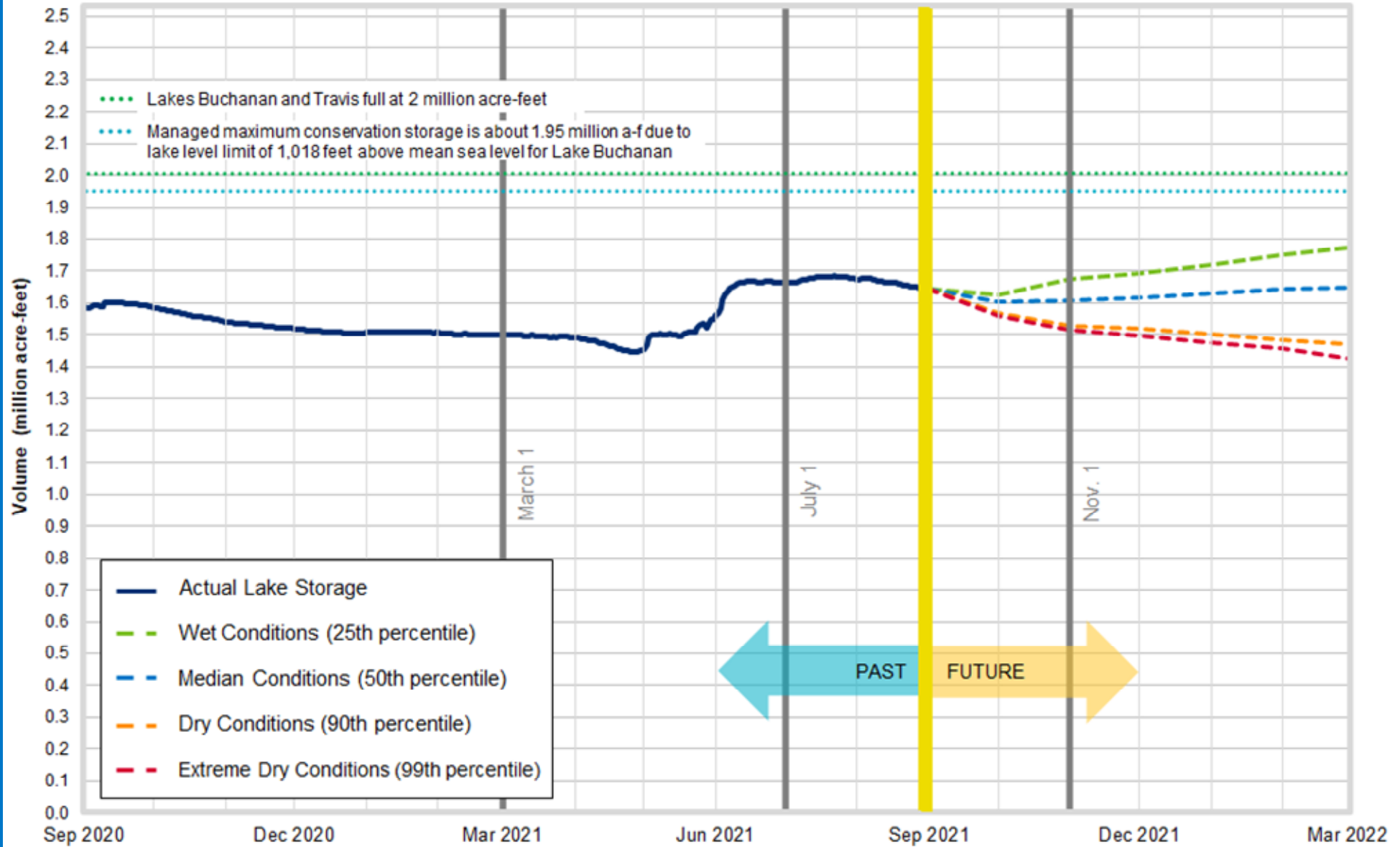
	Rice	Turf	Row Crop	Pasture
Contracts	56	0	1	2
Contracts not serviced	1	0	1	2
Acreage contracted	19,964.7	0	154.1	11.0
Acres serviced	18,968.5	0	0	0
Water delivered (a-f)	24,081.0	0	0	0

Irrigation Operations Update

Second Season Summary CY 2021 (as of Sept. 7, 2021)

	Rice	Turf	Row Crop	Pasture	Wildlife
Gulf Coast Agricultural Division					
Contracts	11	6	0	0	8
Acres contracted	4,358.6	1,715.1	0	0	818.3
Lakeside Agricultural Division					
Contracts	43	0	0	0	15
Acres contracted	15,213.3	0	0	0	1,061.0
Garwood Agricultural Division					
Contracts	48	0	0	0	30
Acres contracted	16,789.5	0	0	0	4,031.3

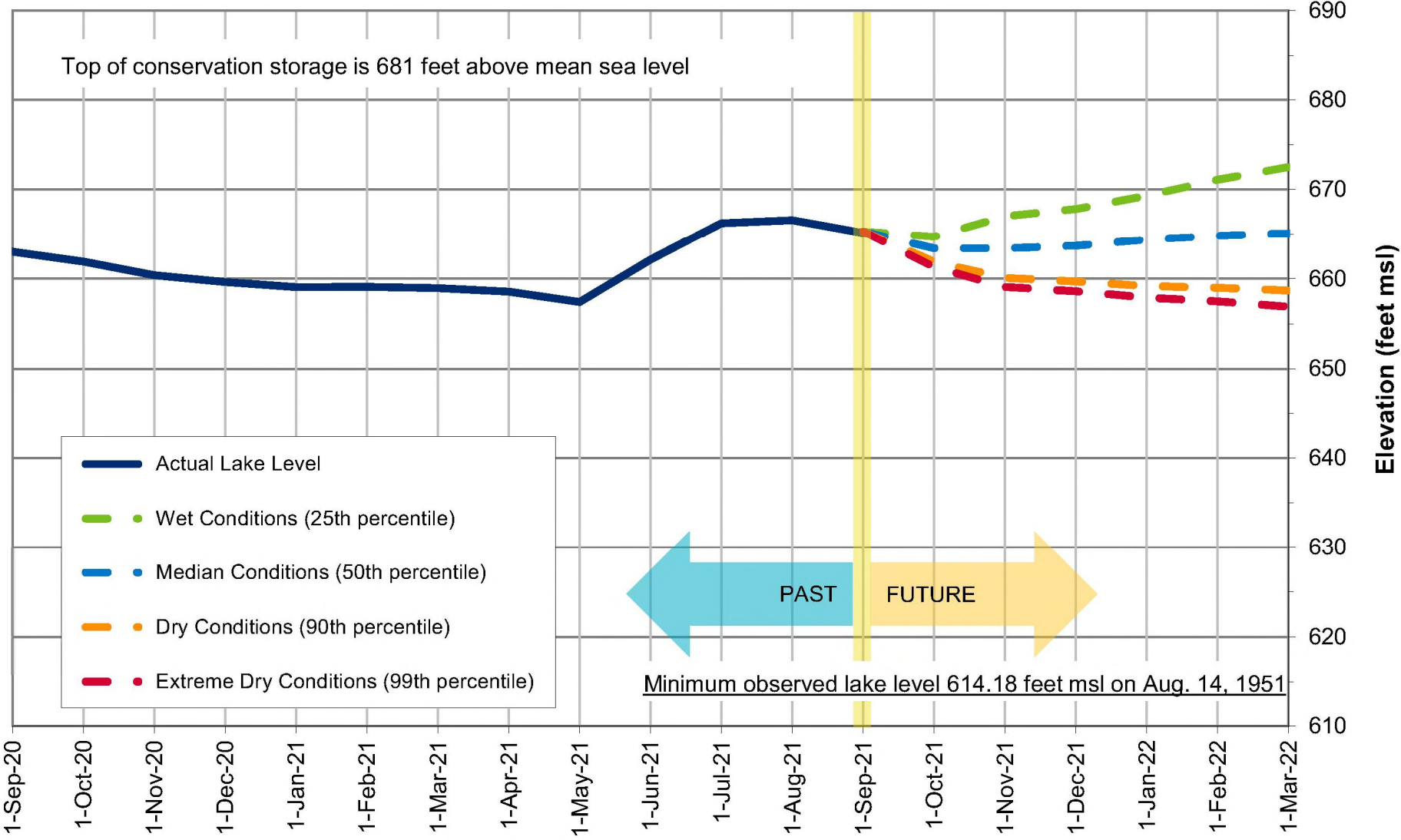
Lakes Buchanan and Travis Total Combined Storage Projections



Date: Sept. 1, 2021

Note: One acre-foot equals 325,851 gallons

Lake Travis Level Projection*

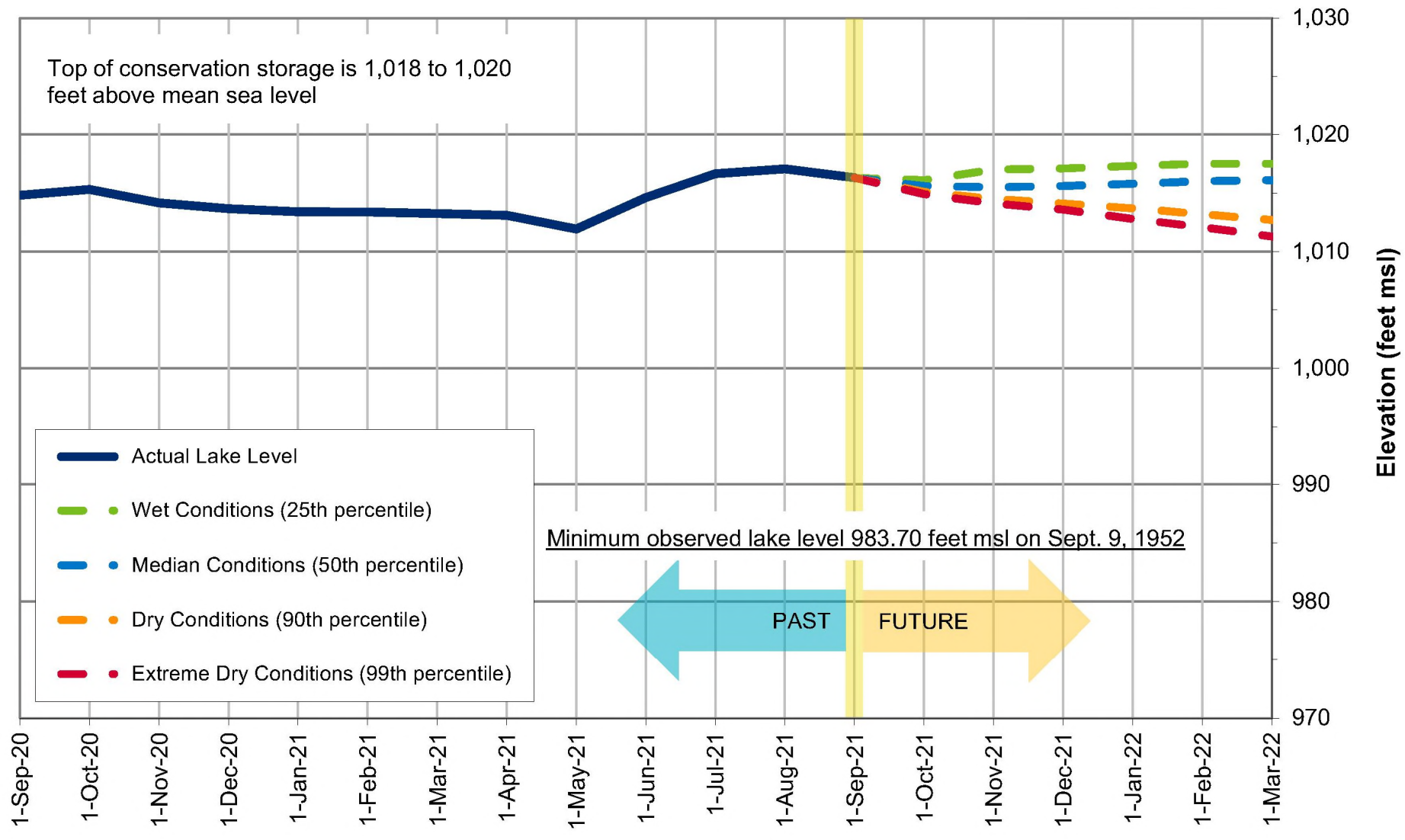


**Average for September:
663.12 feet msl**

**Historic low (1951):
614.18 feet msl**

*Based on results from the draft stochastic model under development to reflect provisions of the 2020 Water Management Plan

Lake Buchanan Level Projection*



**Average for September:
1,009.89 feet msl**

**Historic low (1952):
983.70 feet msl**

*Based on results from the draft stochastic model under development to reflect provisions of the 2020 Water Management Plan

Lake Level Comparisons

	Sept. 1, 2020	Sept. 1, 2021**
Lake Travis (feet msl)	662.85	665.27
Lake Buchanan (feet msl)	1,014.71	1,016.29
Combined storage* (a-f)	1,585,620	1,642,044

*For purposes of the 2020 Water Management Plan, the combined storage is defined as the total of the daily average volume of water in lakes Buchanan and Travis. This determination excludes any water in Lake Buchanan above elevation 1,018 feet msl in the months of May through October or above 1,020 feet msl in the months of November through April and any water in Lake Travis above elevation 681 feet msl.

** Effective May 27, 2021, storage volumes for Lakes Buchanan and Travis are based on the Texas Water Development Board volumetric surveys published in 2020 (Buchanan) and 2021 (Travis).



LCRA

ENERGY • WATER • COMMUNITY SERVICES