

Basin Conditions Update

Water Operations Committee Meeting

May 19, 2021



U.S. Drought Monitor

Texas

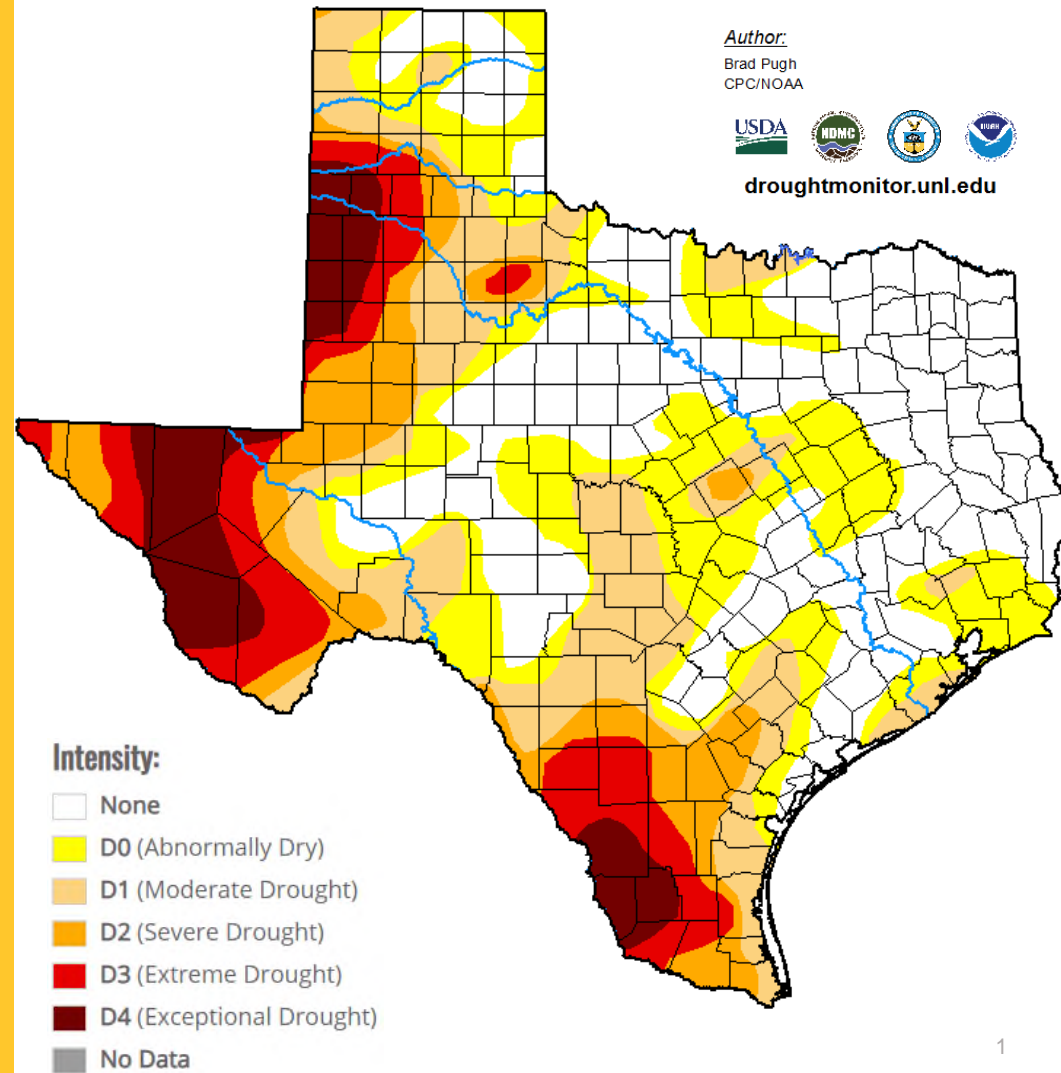
As of May 4, 2021

The Drought Monitor focuses on broad-scale conditions. Local conditions may vary. For more information on the Drought Monitor, go to <https://droughtmonitor.unl.edu/About.aspx>

Author:
Brad Pugh
CPC/NOAA



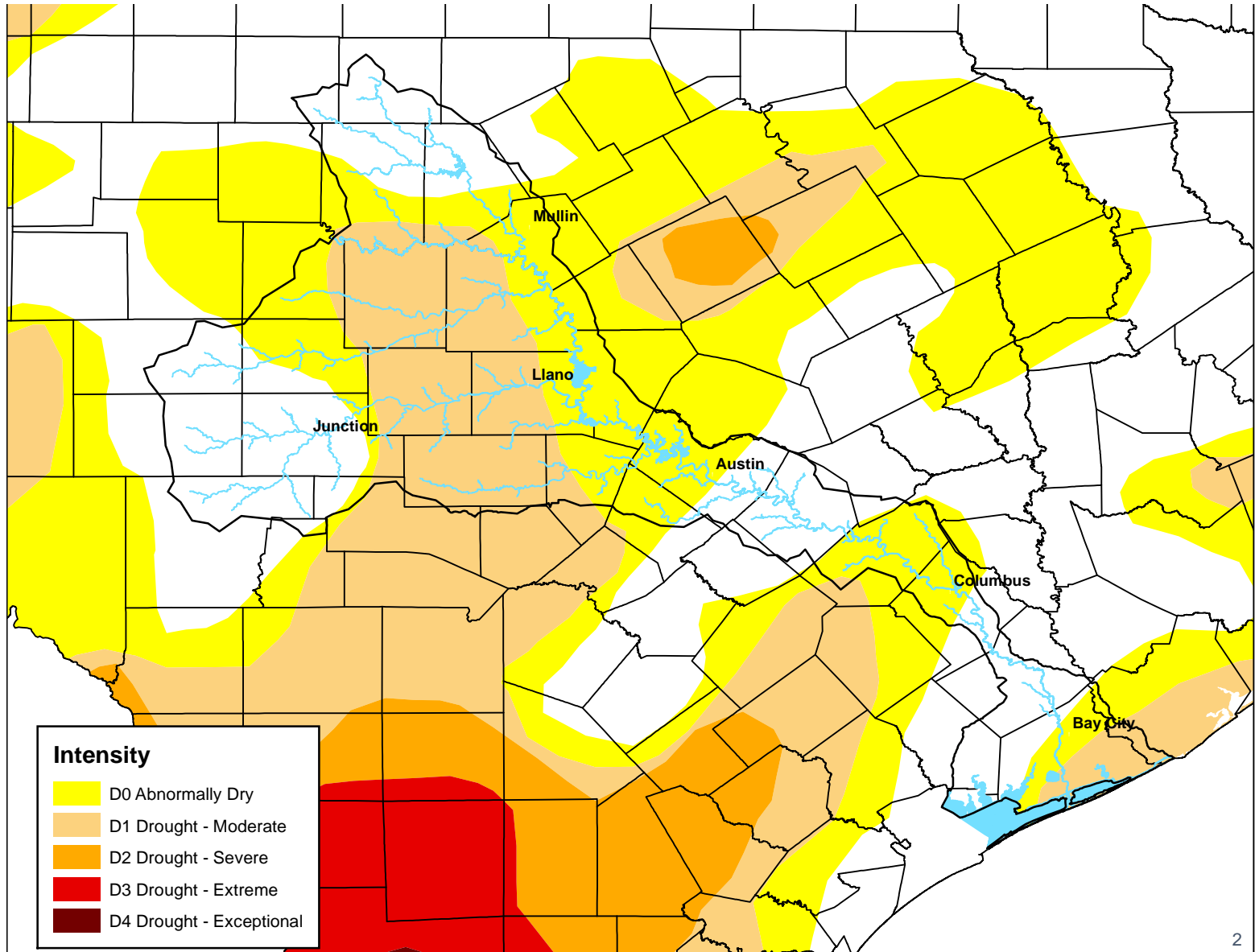
droughtmonitor.unl.edu



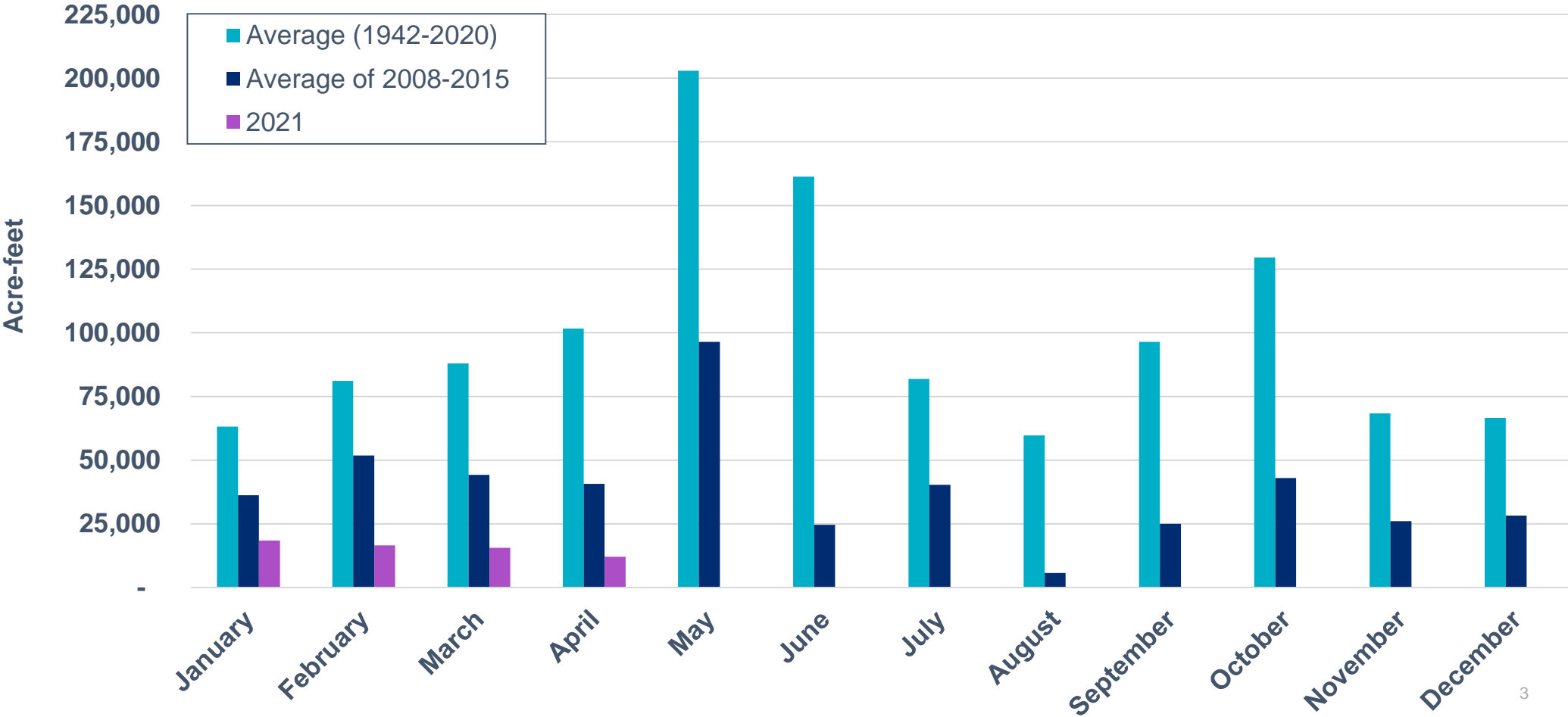
U.S. Drought Monitor

Lower Colorado River Basin

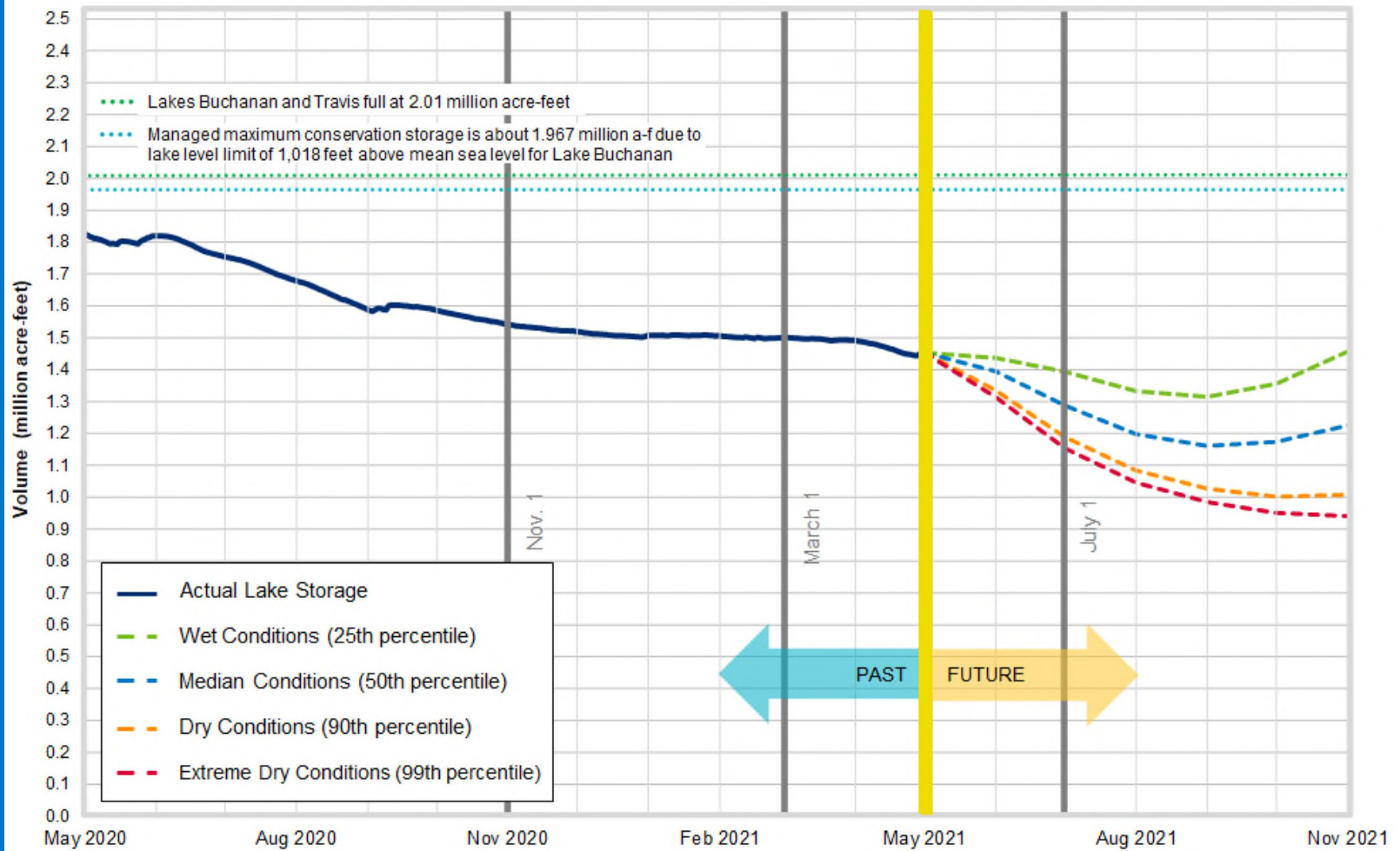
As of May 4, 2021



Water Flowing Into the Highland Lakes



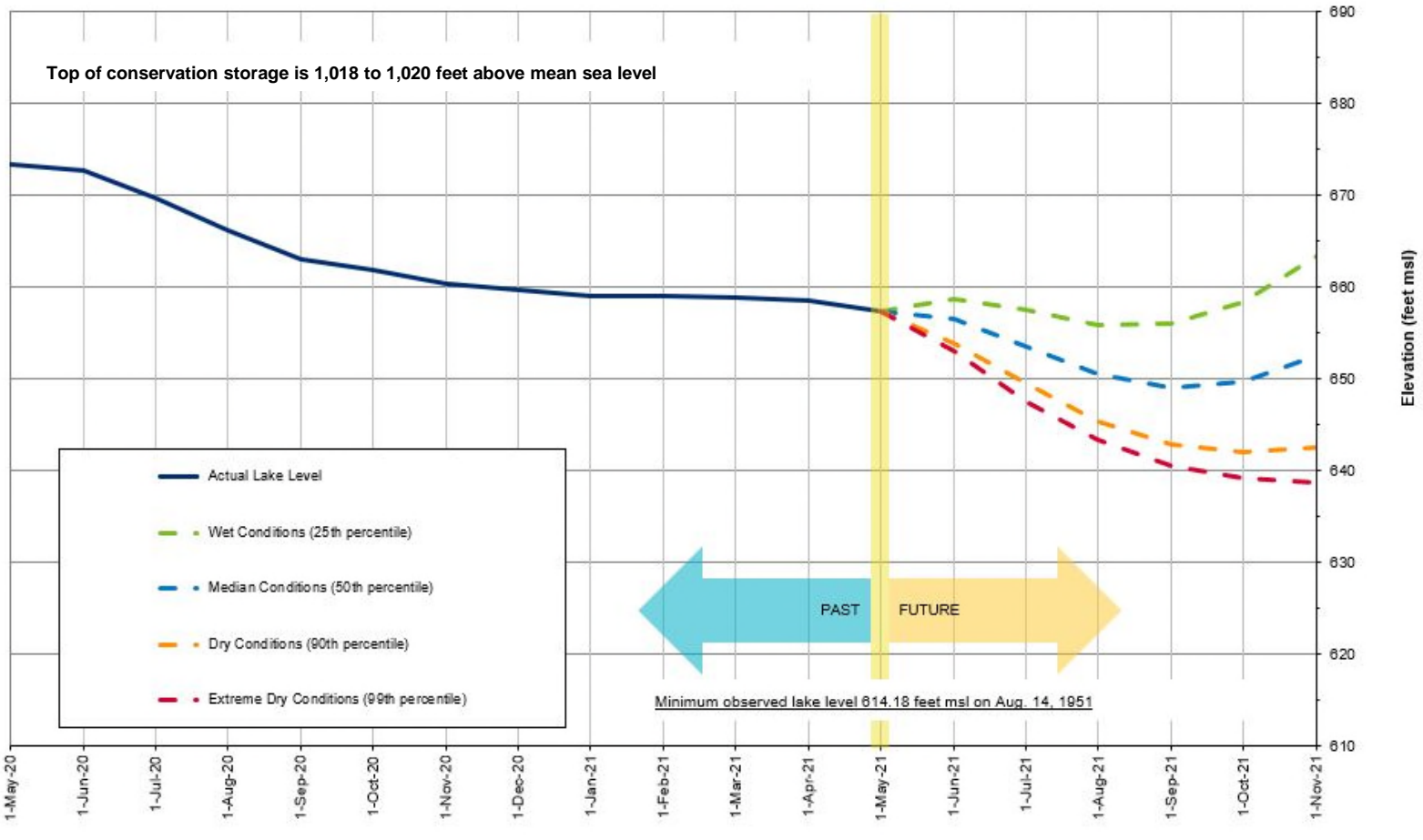
Lakes Buchanan and Travis Total Combined Storage Projections



Date: May 1, 2021

Note: One acre-foot equals 325,851 gallons

Lake Travis Level Forecast*

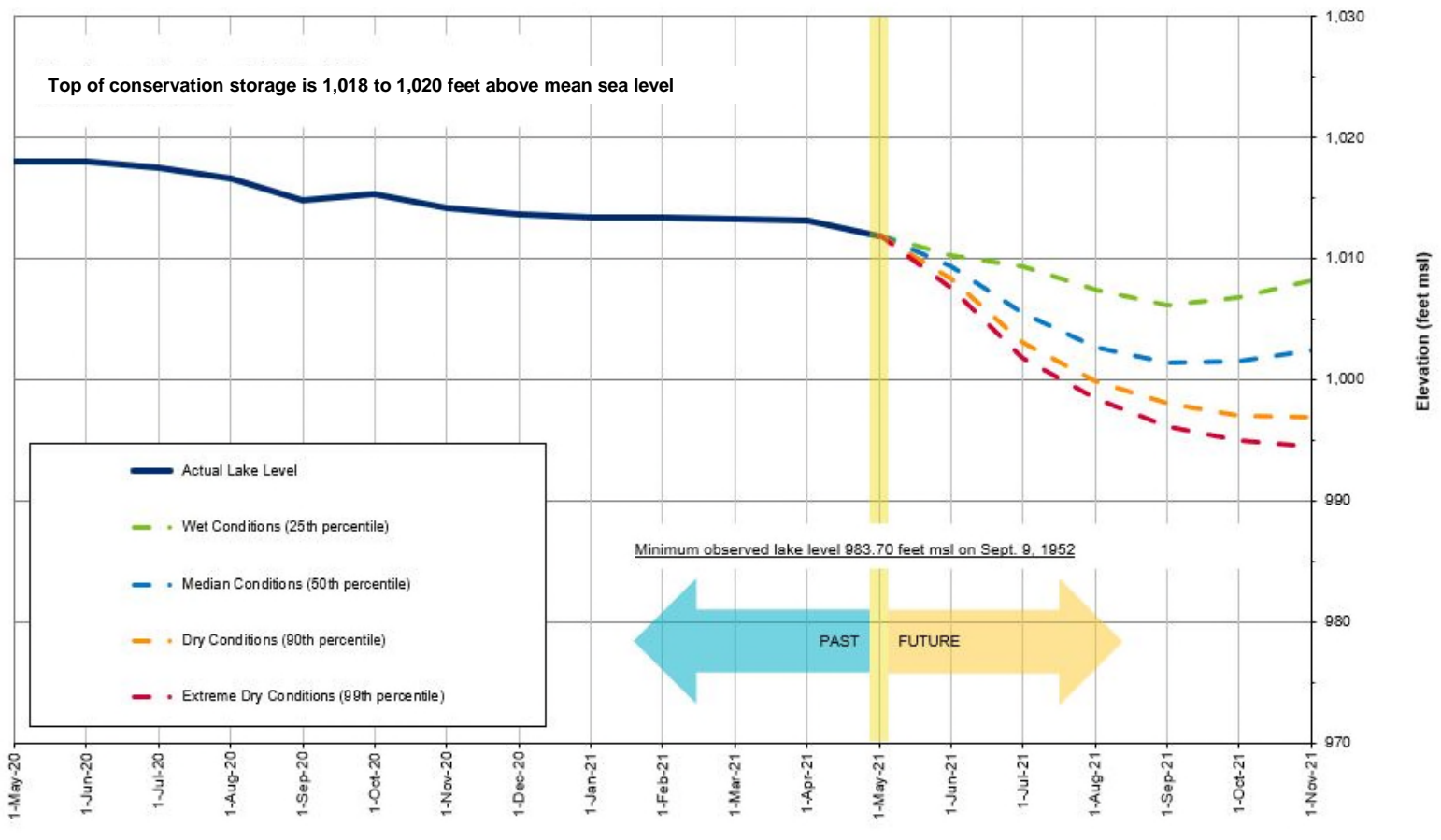


**Average for May:
669.87 feet msl**

**Historic low (1951):
614.18 feet msl**

*Based on results from the draft stochastic model under development to reflect provisions of the 2020 Water Management Plan

Lake Buchanan Level Forecast*



Average for May:
1,012.89 feet msl

Historic low (1952):
983.70 feet msl

*Based on results from the draft stochastic model under development to reflect provisions of the 2020 Water Management Plan

Lake Level Comparisons

	May 1, 2020	May 1, 2021
Lake Travis (feet msl)	673.30	657.37
Lake Buchanan (feet msl)	1,017.96	1,011.91
Combined storage* (a-f)	1,823,565	1,454,942

*For purposes of the 2020 Water Management Plan, the combined storage is defined as the total of the daily average volume of water in lakes Buchanan and Travis. This determination excludes any water in Lake Buchanan above elevation 1,018 feet msl in the months of May through October or above 1,020 feet msl in the months of November through April and any water in Lake Travis above elevation 681 feet msl.